



City of **Montgomery**, Alabama

Traffic Engineering Department
Wesley S. Cox, P.E.

Steven L. Reed
Mayor

Montgomery City Council Members

Cornelius "CC" Calhoun - President	Julie T. Beard	Orode Mitchell
Glen O. Pruitt, Jr. - Pro Tem	Marche Johnson	Andrew Szymanski
Ed Grimes	Franetta Riley	Charles W. Jinright

May 7, 2026

Mr. Casey Lewis
Senior Transportation Planner
Transportation Planning Division, Montgomery MPO
City of Montgomery
Intermodal Transportation Center
495 Molton Street
Montgomery, AL 36104

Subject: FY2026 Carbon Reduction Program (CRP) Application – Atlanta Highway Traffic Signal Upgrades and Congestion Management

Dear Mr. Lewis,

I am pleased to submit this application on behalf of the City of Montgomery for FY2026 Carbon Reduction Program funding. As Traffic Engineer, I strongly support the Atlanta Highway Traffic Signal Upgrades and Congestion Management Project.

The project will upgrade traffic signal operations at 16 signalized intersections along Atlanta Highway from Eastmont Plaza to Taylor Road. Improvements include upgrading signal cabinets and hardware, installing PTZ cameras, converting to Flashing Yellow Arrow left-turn signals, and developing new optimized signal timings and coordination.

These upgrades will reduce vehicle idling and stops, delivering measurable carbon emission reductions while improving safety and traffic flow on this major east-west corridor. The City is committed to providing the local match and fully managing project delivery.

Thank you for considering this application. I am available to provide any additional information needed and can be reached at (334)625-2862 or wcox@montgomeryal.gov.

Sincerely,

Wesley S. Cox, P.E.
Director of Traffic Engineering
City of Montgomery

Carbon Reduction Program Application

Atlanta Highway Traffic Signal Upgrades and Congestion Management



Atlanta Highway

Traffic Signal Upgrades & Congestion Management

Sponsor Information

City of Montgomery
Population: 200,041

Mayor Steven L. Reed
P.O. Box 1111, Montgomery, AL 36101
(334) 625-2000

Contact: Wesley S. Cox, P.E.
Director of Traffic Engineering
(334) 625-2862

Prepared By: Wesley S. Cox, P.E.
Director of Traffic Engineering
(334) 625-2862

Location of the Project

Atlanta Highway from Faulkner University's Eagle Dr to Taylor Rd
Montgomery County
City of Montgomery, AL

ALDOT Southeast Region – Montgomery Area
No State, U.S. or Interstate Route
Senatorial District Number: 25
House District Number: 74/78

Legislators

State Senator Will Barfoot
State Representatives Phillip Ensler & Kenyatte Hassell

Project Cost

Total: \$795,564 Federal Share: \$636,451 Sponsor Share: \$159,113
--

Project Description

The City of Montgomery's proposed Atlanta Highway project is a traffic signal hardware and timing upgrade with corridor management for 16 signalized intersections along a major arterial highway. The project begins at the Eastmont Plaza Shopping Center intersection near Faulkner University and includes all signalized intersections to the east, ending at the Taylor Road intersection. Proposed improvements in this project include:

- New vehicle detection systems that provide signal performance measure (SPM) data
- New flashing yellow arrow (FYA) signalization for permissive left turns
- New CCTV cameras to actively monitor and respond to incidents
- Web based central signal software to allow for improved operational monitoring and active signal timing management
- New time of day, coordinated signal timings with fine tuning and periodic assessments

Atlanta Highway is a critical East-West corridor owned by the City of Montgomery that serves as a commuter route and a link for multiple universities, a hospital, commercial businesses, and residential subdivisions. The eastern end of this corridor is experiencing a new surge of development, both residential single-family and multi-family housing projects along with retail businesses that have an impact on traffic operations.

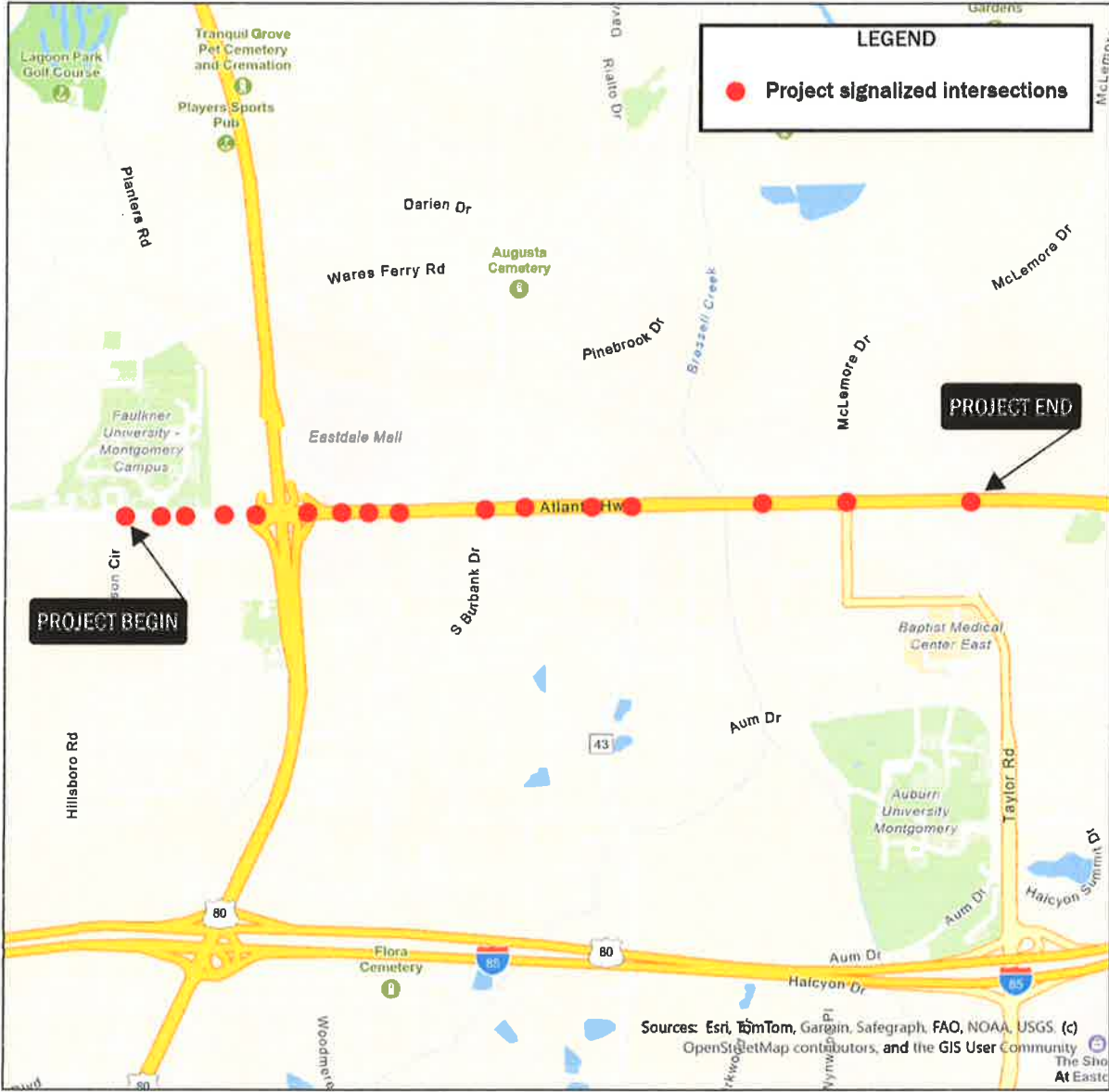
New signal technology and in-depth signal timings and coordination performed by Kimley-Horn to be implemented in this project will maximize efficiency of the traffic signal system and reduce vehicle delay. This project will implement advanced transportation and congestion management technologies.

Project Budget

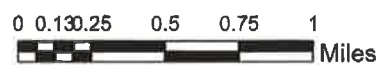
ITEM	QTY	UNIT COST	ITEM COST
Traffic Signal Cabinet, TS2 Type 1, 8-Phase Base Mount, MMU2-16 (Eastmont Plaza)	1	\$ 18,117.00	\$ 18,117.00
Traffic Signal Cabinet, TS2 Type 1, 8-Phase Base Mount, MMU2-16 (Eagle Dr)	1	\$ 18,117.00	\$ 18,117.00
Traffic Signal Cabinet, TS2 Type 1, 8-Phase Base Mount, MMU2-16 (Carol Villa Dr)	1	\$ 18,117.00	\$ 18,117.00
Traffic Signal Cabinet, TS2 Type 1, 8-Phase Base Mount, MMU2-16 (Montgomery East Plaza)	1	\$ 18,117.00	\$ 18,117.00
Traffic Signal Cabinet, TS2 Type 1, 8-Phase Base Mount, MMU2-16 (East Boulevard South)	1	\$ 18,117.00	\$ 18,117.00
Traffic Signal Cabinet, TS2 Type 1, 8-Phase Base Mount, MMU2-16 (East Boulevard North)	1	\$ 18,117.00	\$ 18,117.00
Traffic Signal Cabinet, TS2 Type 1, 8-Phase Pole Mount, MMU2-16 (Eastdale Rd South)	1	\$ 17,985.00	\$ 17,985.00
Pan, Tilt, Zoom Camera System	9	\$ 2,785.00	\$ 25,065.00
Traffic Signal Vehicle Detection System	16	\$ 28,545.00	\$ 456,720.00
Flashing Yellow Arrow Traffic Signal Modifications	8	\$ 1,150.00	\$ 9,200.00
Traffic Signal Management System License	16	\$ 485.00	\$ 7,760.00
Traffic Signal Timings (Data Collection, Re-Timing, Fine-Tuning)	1	\$ 170,000.00	\$ 170,000.00

Total Project Cost	\$ 795,432.00
Federal Share	\$ 636,345.60
Local Share	\$ 159,086.40

Project Map



Sources: Esri, TomTom, Garmin, Safegraph, FAO, NOAA, USGS (c) OpenStreetMap contributors, and the GIS User Community



Project Photos

Atlanta Hwy above Eagle Dr looking East



Atlanta Hwy and Eastmont Plaza Intersection looking East



Atlanta Hwy and Eagle Dr Intersection looking East



Atlanta Hwy and Carol Villa Dr Intersection looking East



Atlanta Hwy and Montgomery East Plaza Intersection looking East



Atlanta Hwy and East Boulevard S Intersection looking East



Atlanta Hwy and East Boulevard N Intersection looking East



Atlanta Hwy and W Eastdale Mall Rd Intersection looking East



Atlanta Hwy and Eastdale Rd S Intersection looking East



Atlanta Hwy and E Eastdale Mall Rd Intersection looking East



Atlanta Hwy and Burbank Dr Intersection looking East



Atlanta Hwy and Frazer Church Intersection looking East



Atlanta Hwy and Sylvest Dr Intersection looking East



Atlanta Hwy and Bell Rd Intersection looking East



Atlanta Hwy and Ashton Rd/Walmart Intersection looking East



Atlanta Hwy and Brown Springs Rd/McLemore Rd Intersection looking East



Atlanta Hwy and Taylor Rd Intersection looking East

