



**Transportation Alternatives Program (TAP) Project Proposal
Recommendations Received for the Montgomery Metropolitan Planning
Organization (MPO)
Fiscal Year 2024 Transportation Alternatives Program (TAP)**

The Montgomery Metropolitan Planning Organization (MPO) receives a direct annual allocation for the Transportation Alternatives Program (TAP) in the amount of \$840,666. The Montgomery MPO Transportation Alternatives Program (TAP) has a funds balance of **\$3,426,522**, (Federal funds only).

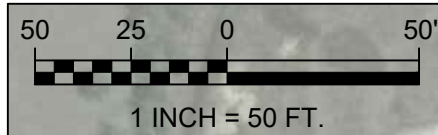
Two (2) TAP project proposals were received from the following MPO Member governments: City of Prattville (1) and Town of Pike Road (1). Below is a summary of each project.

Sponsor	Location	Brief Description	Federal	Fully Fund	Partially Fund	Not Fund
Town of Pike Road	Trotman Road, Rolling Hills Blvd and Byron Nelson Blvd	Construct pedestrian sidewalk connector along Rolling Hills Blvd	\$688,016	X		
City of Prattville	East Main St between Chambliss Street and Geneva St	Construct pedestrian sidewalk along Selma Hwy	\$486,335	X		
TOTAL TAP FUNDS REQUESTED =			\$1,174,351			

Total Available TAP Funds Available Balance Per ALDOT Updated Official Report as of July 3, 2024 is **\$3,426,522**. TAP Balance of **\$3,426,522** - **\$1,174,351** in **TAP Project Funding Requests** = **\$2,252,171** TAP Balance. 10% in Cost Overrun Allowance if Needed.

There will still be a balance of federal funds left in the Montgomery CRP of \$2,252,171 if these projects are approved as requested.

6/12/2024 4:52:55 PM O:\Pike Road, Town Of\FY2025 MPO.TAP Application\Pike Road MPO.TAP Project Activities Map.dwg



Pike Road Baseball Complex



Pike Road Agricultural, Recreational and Performing Arts Center



Trotman Road

Rolling Hills Blvd

REQ'D PEDESTRIAN PATH

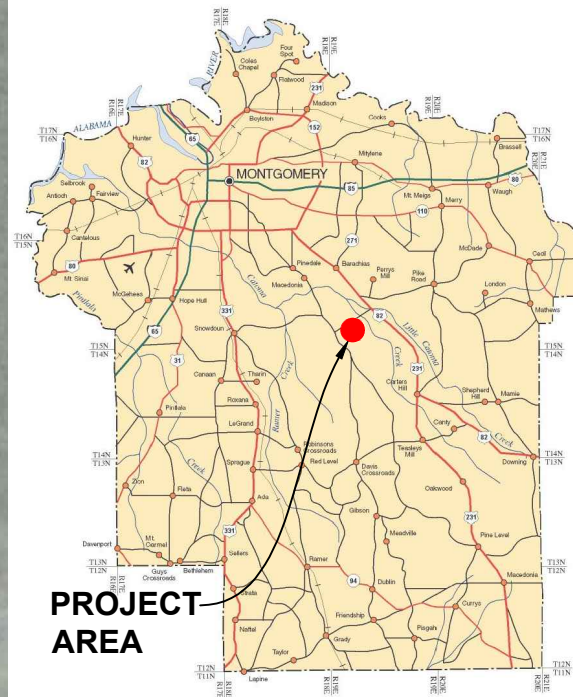
Byron Nelson Blvd

Cottonwood Golf Course

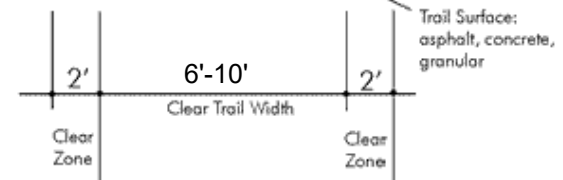
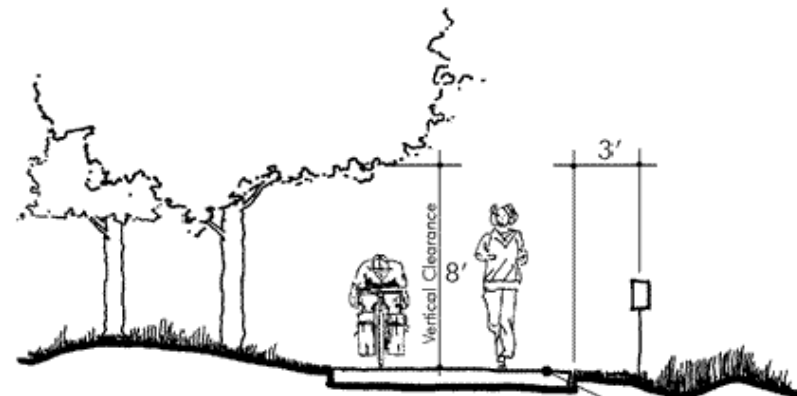
Rolling Hills Park

REQ'D ACTIVE CROSSING

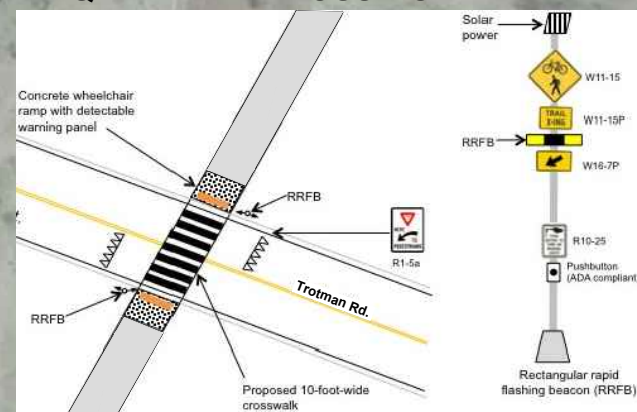
Pike Road Tennis Facility (under construction)



PROJECT AREA



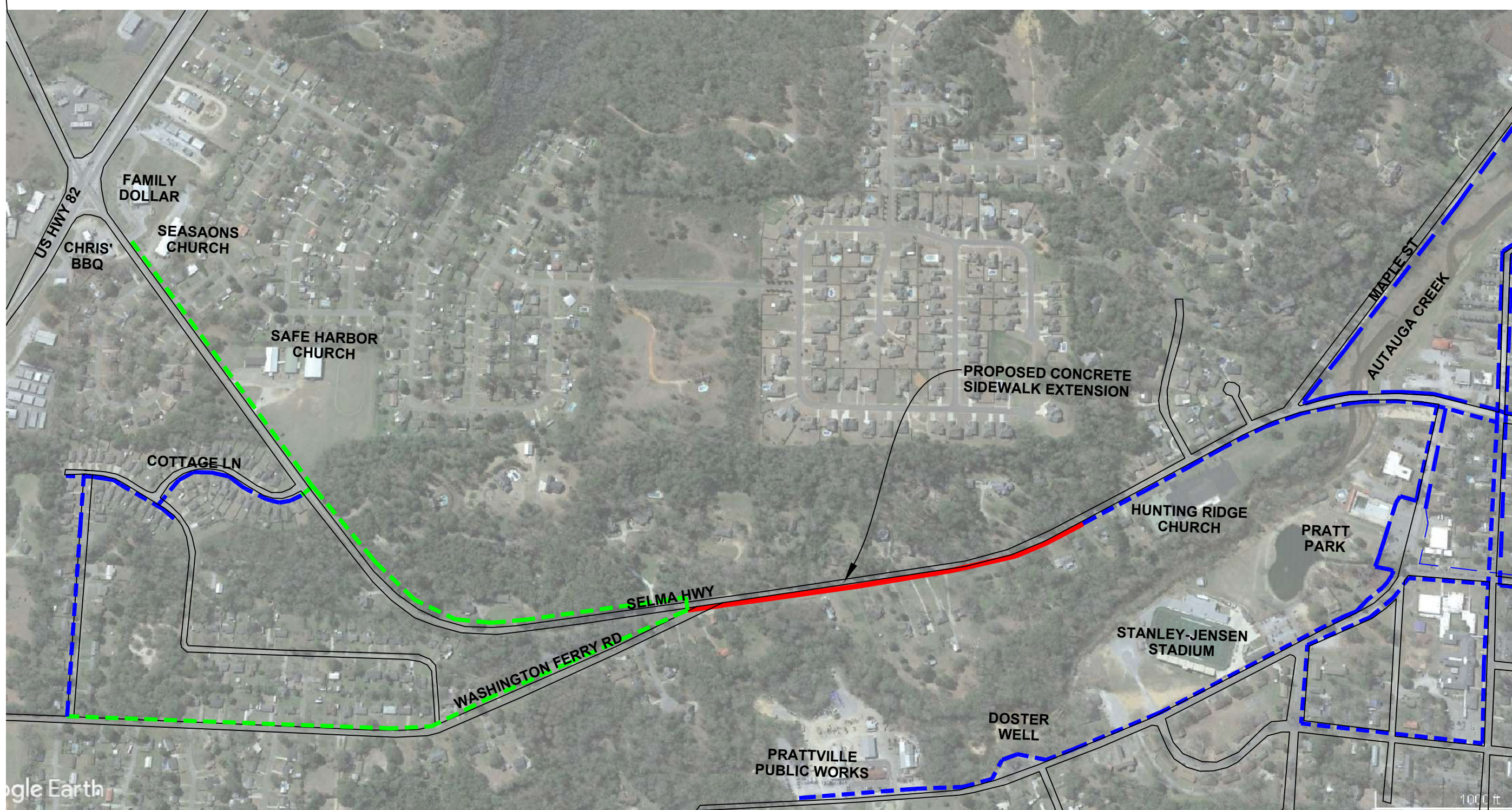
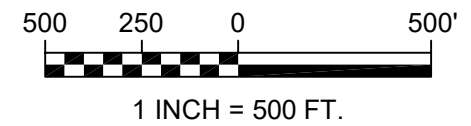
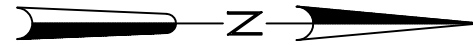
TYPICAL PATH SECTION



TOWN OF PIKE ROAD
PEDESTRIAN CONNECTOR ALONG ROLLING HILLS BLVD
PIKE ROAD, AL

SHEET TITLE	PROJECT ACTIVITIES MAP		
	SHEET NO.	PROJECT NO.	DATE
	X-1	24XXX	01-11-2024
		SCALE	DATE
		1"=50'	

6/12/2024 4:13:47 PM O:\Prattville_CityOfGeneral\FY2025_MPO_TAP_Selma Hwy\Selma Hwy Sidewalk Project_Map.dwg



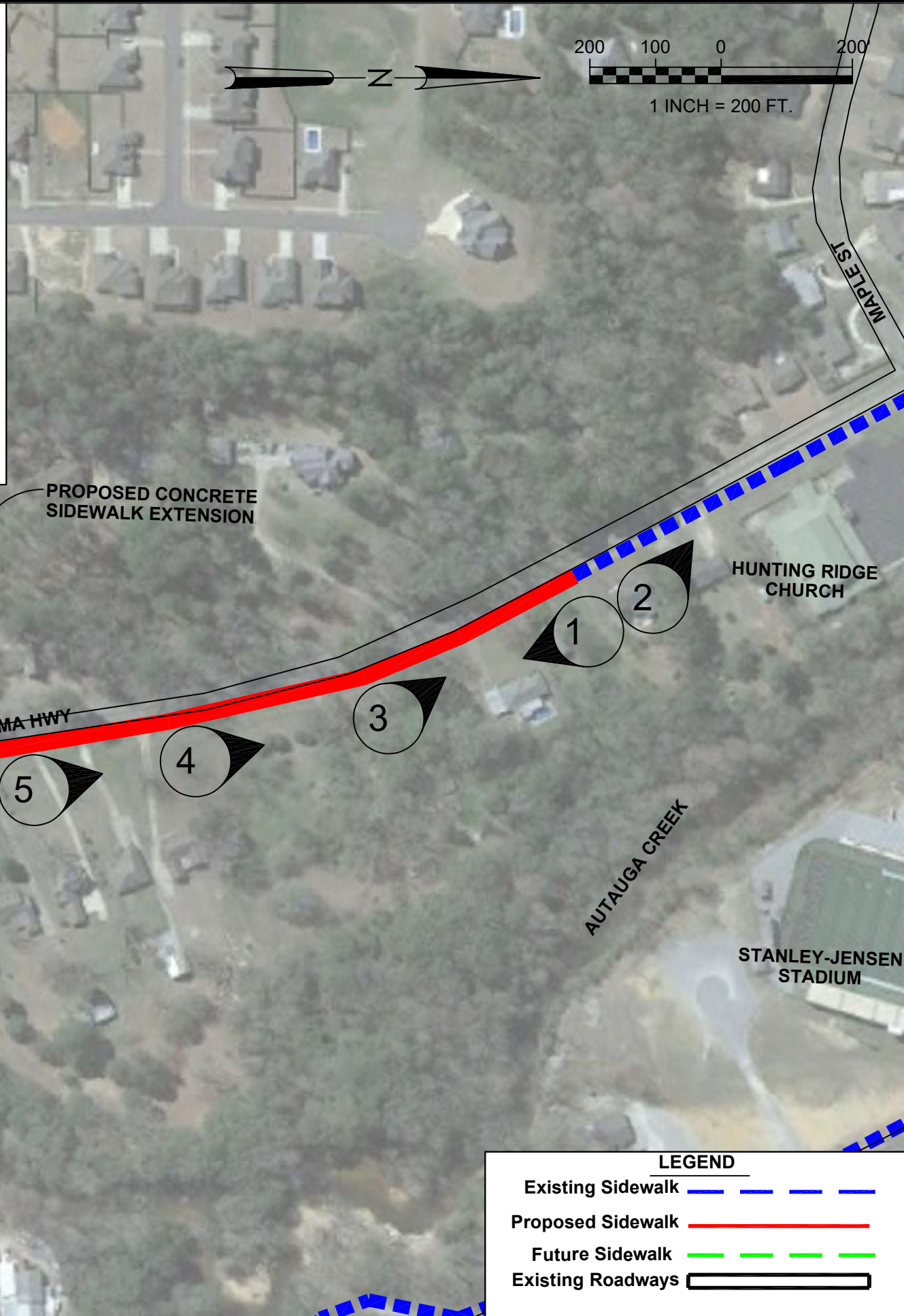
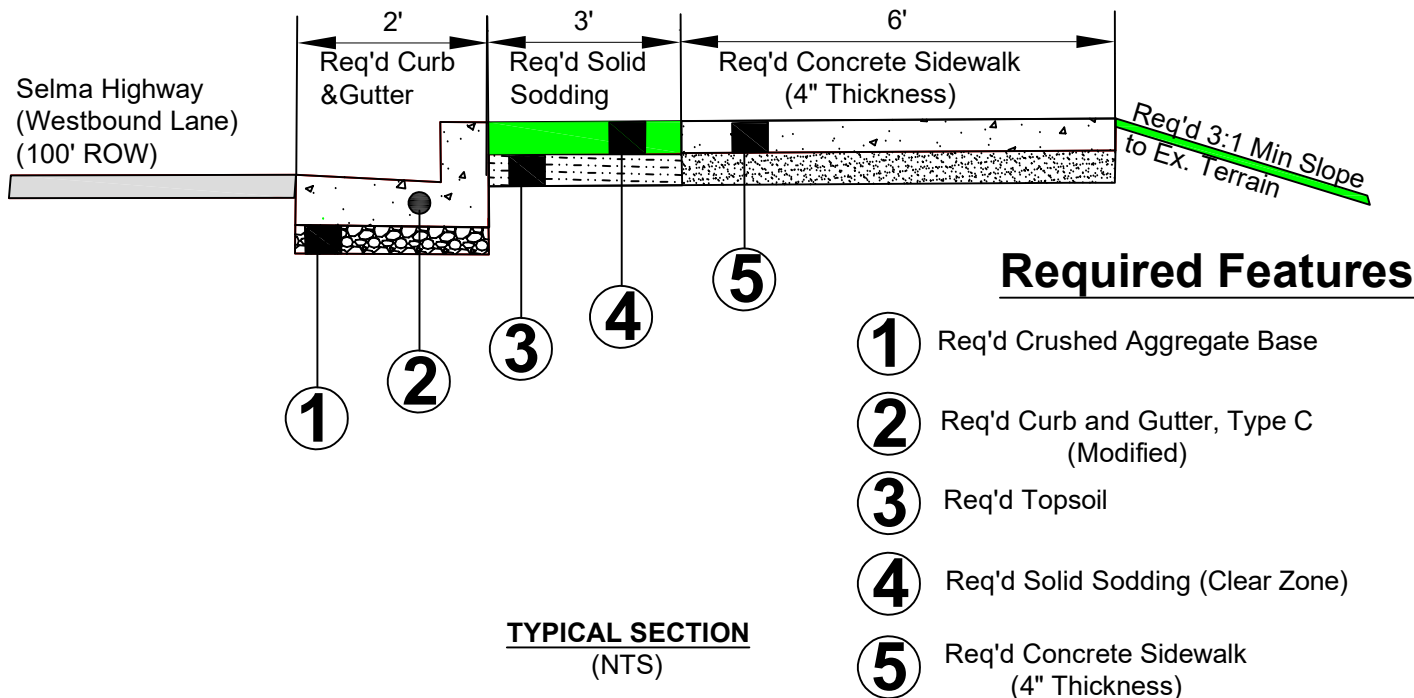
LEGEND	
Existing Sidewalk	
Proposed Sidewalk	
Future Sidewalk	
Existing Roadways	



CITY OF PRATTVILLE
 SELMA HIGHWAY SIDEWALK IMPROVEMENTS
 PRATTVILLE, AL

PROJECT MAP	PROJECT NO.	247XX
	SCALE	GRAPHIC
SHEET NO.	X-1	
	DATE	01-24-2013

O:\Prattville_CityOfGeneral\FY2025 MPO TAP_Selma Hwy\Selma Hwy Sidewalk Project_Map.dwg 6/12/2024 4:14:05 PM



LEGEND

Existing Sidewalk	---
Proposed Sidewalk	—
Future Sidewalk	- - -
Existing Roadways	▭



CITY OF PRATTVILLE
SELMA HIGHWAY SIDEWALK IMPROVEMENTS
PRATTVILLE, AL

SHEET TITLE	PROJECT MAP
SHEET NO.	X-2
PROJECT NO.	247XX
SCALE	GRAPHIC
DATE	06-12-2024