

Montgomery Metropolitan Planning Organization (MPO)

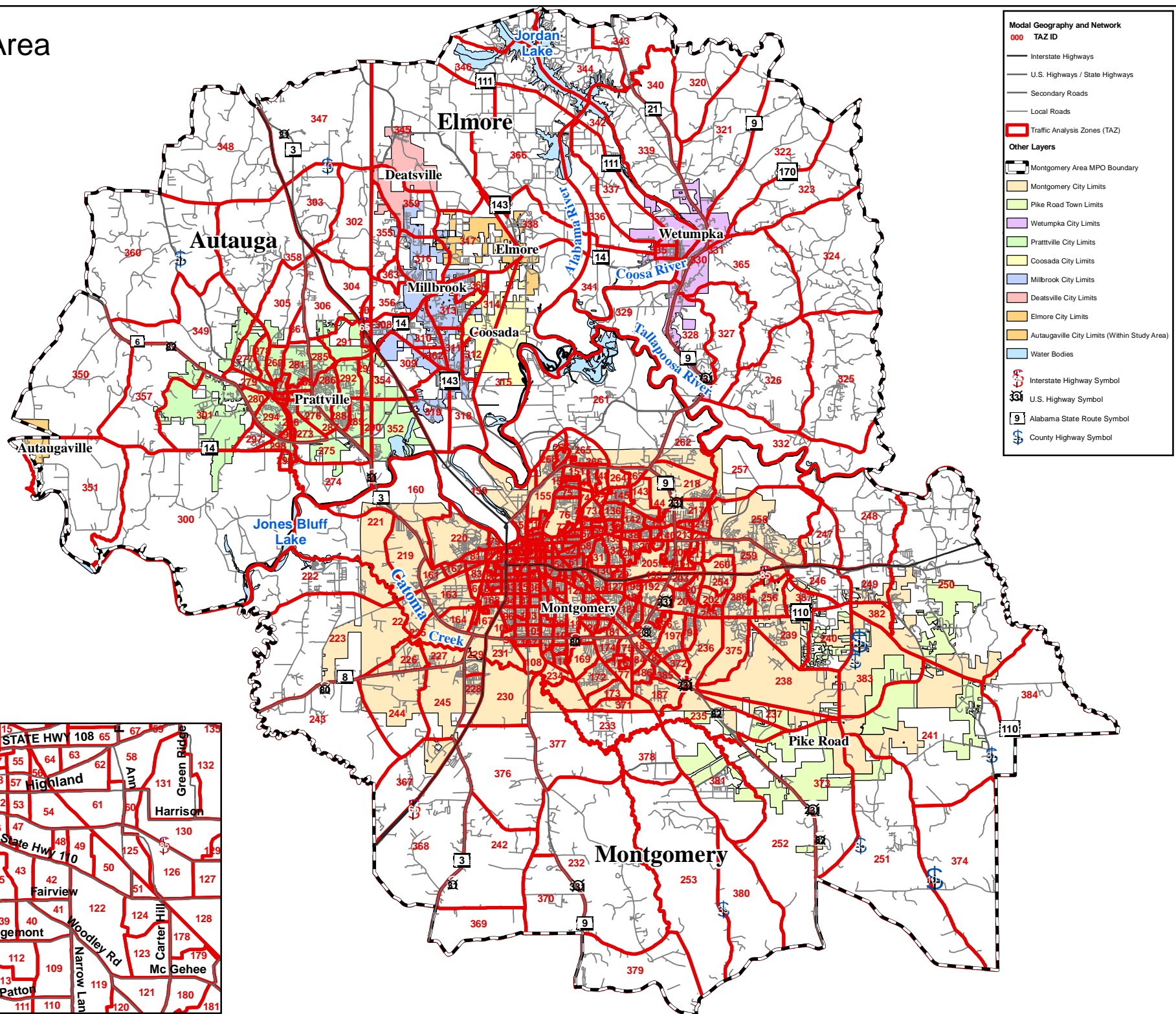
Long Range Transportation Plan

Forecast Year 2035 Socioeconomic Data

April 2009

Prepared by MPO Staff

Study Area



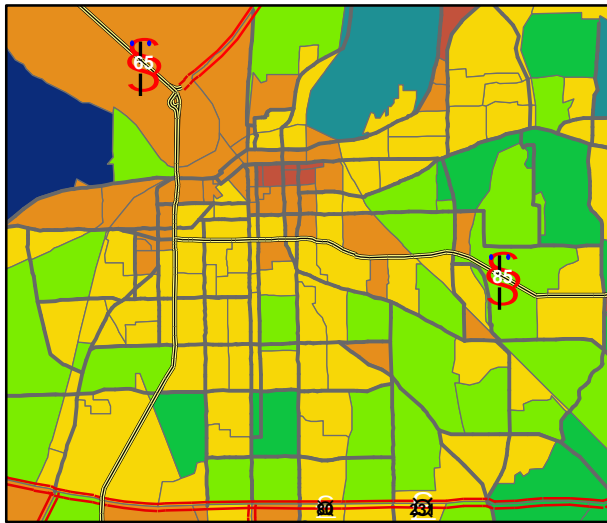
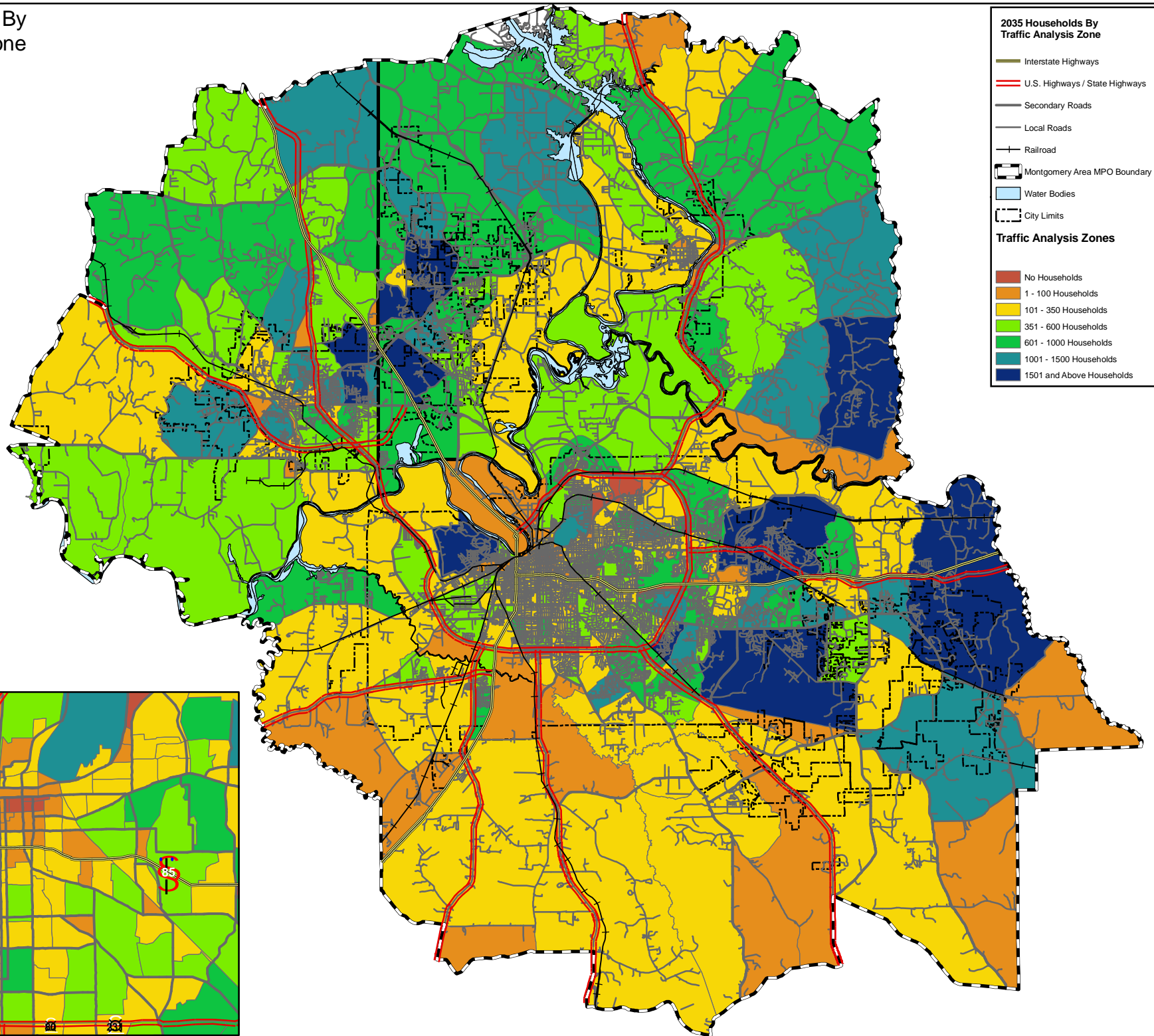
Modal Geography and Network

- 000 TAZ ID
- Interstate Highways
- U.S. Highways / State Highways
- Secondary Roads
- Local Roads
- Traffic Analysis Zones (TAZ)

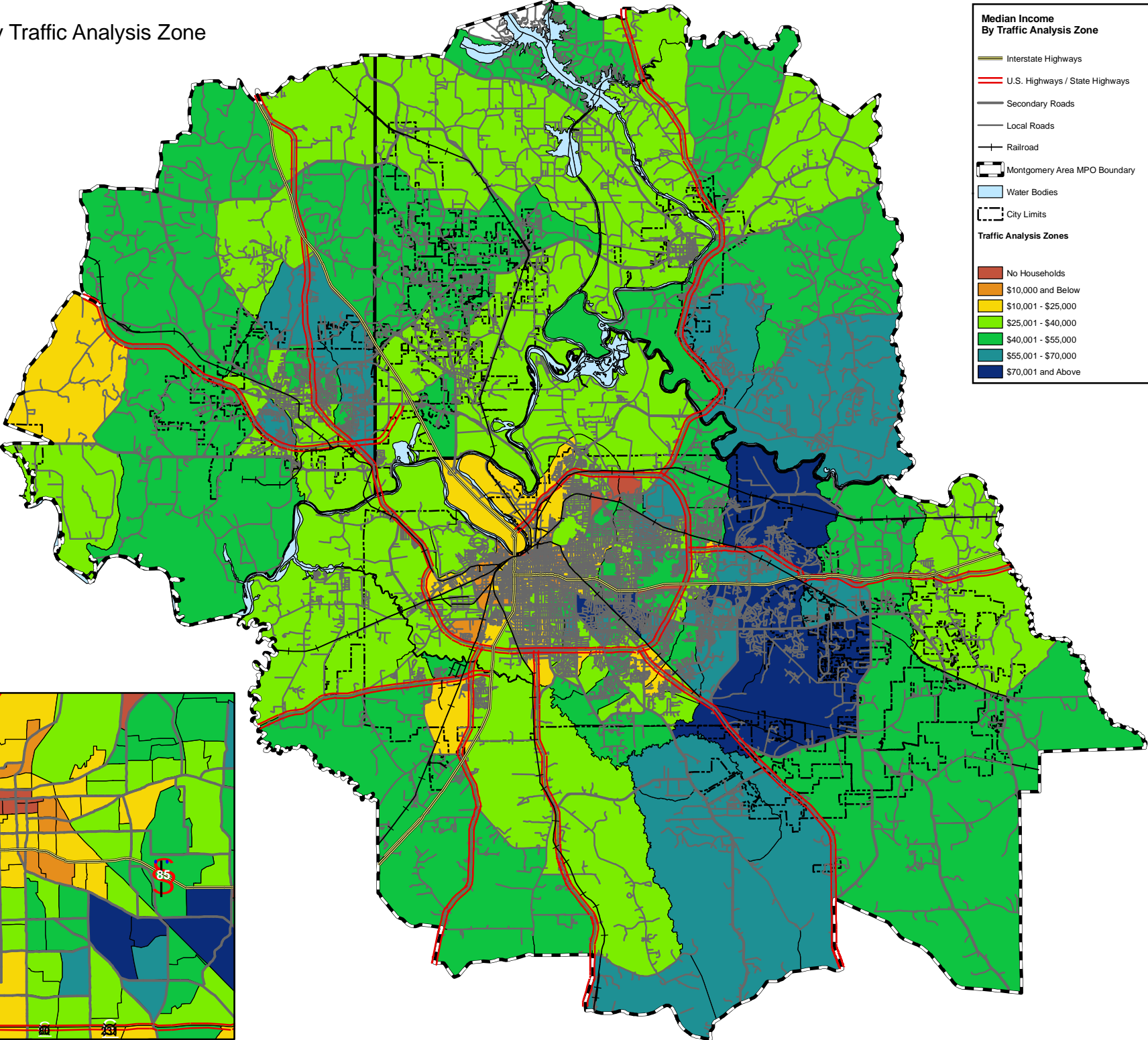
Other Layers

- Montgomery Area MPO Boundary
- Montgomery City Limits
- Pike Road Town Limits
- Wetumpka City Limits
- Prattville City Limits
- Coosada City Limits
- Millbrook City Limits
- Deatsville City Limits
- Elmore City Limits
- Autaugaville City Limits (Within Study Area)
- Water Bodies
- Interstate Highway Symbol
- U.S. Highway Symbol
- Alabama State Route Symbol
- County Highway Symbol

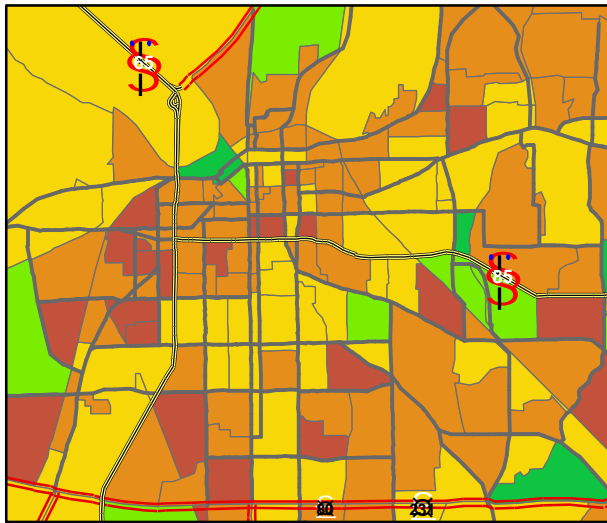
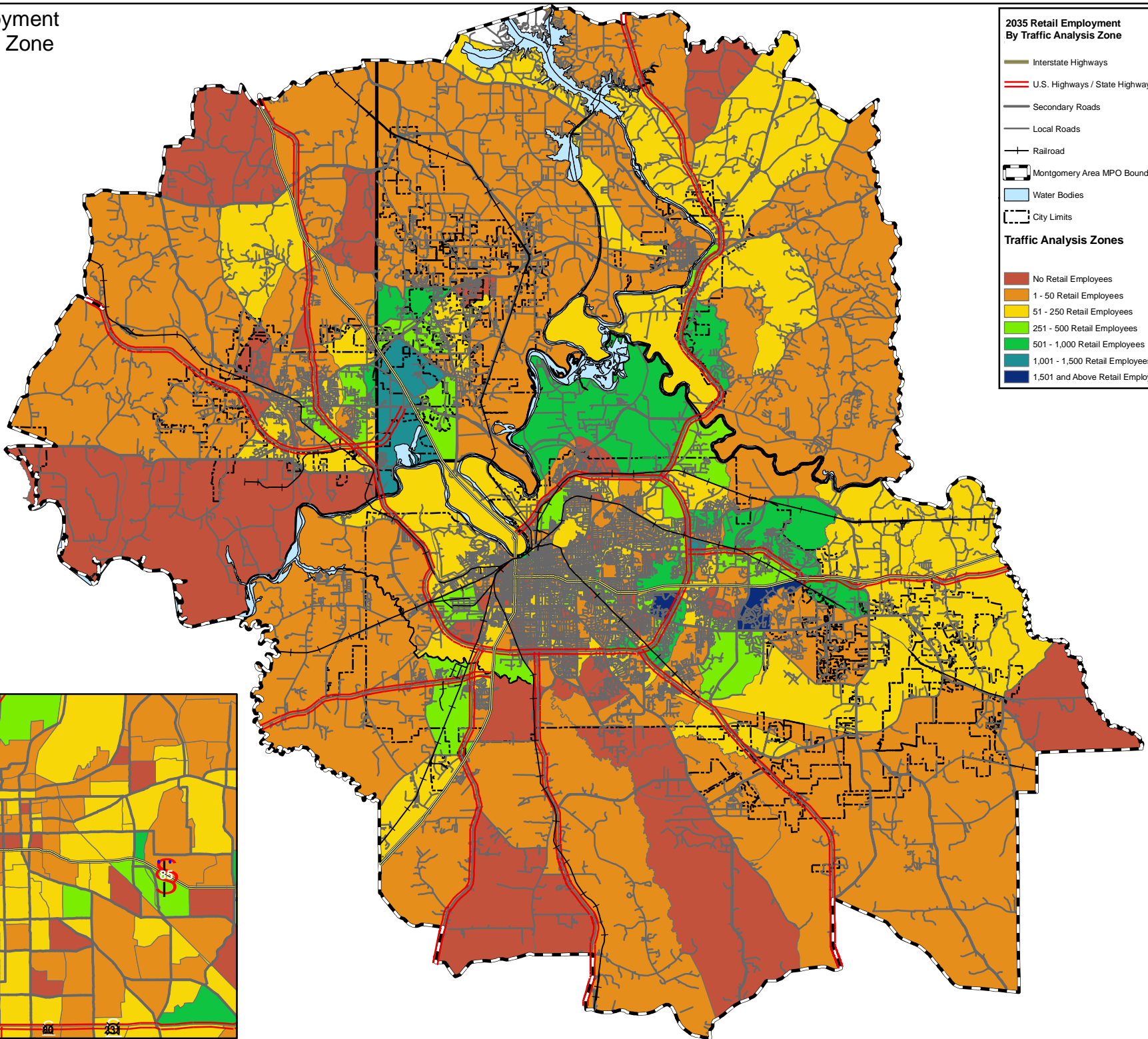
2035 Households By Traffic Analysis Zone



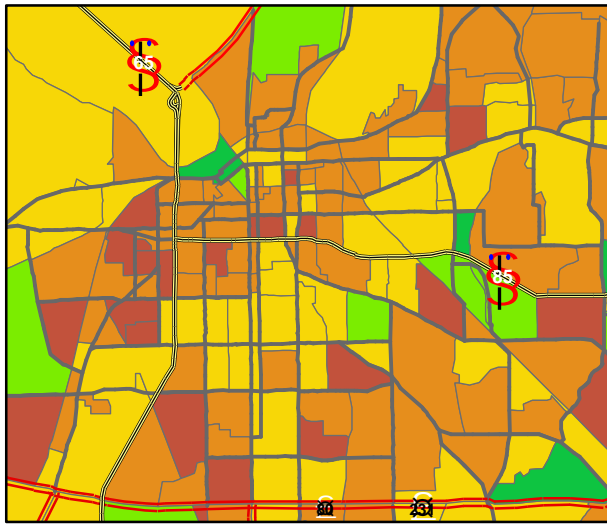
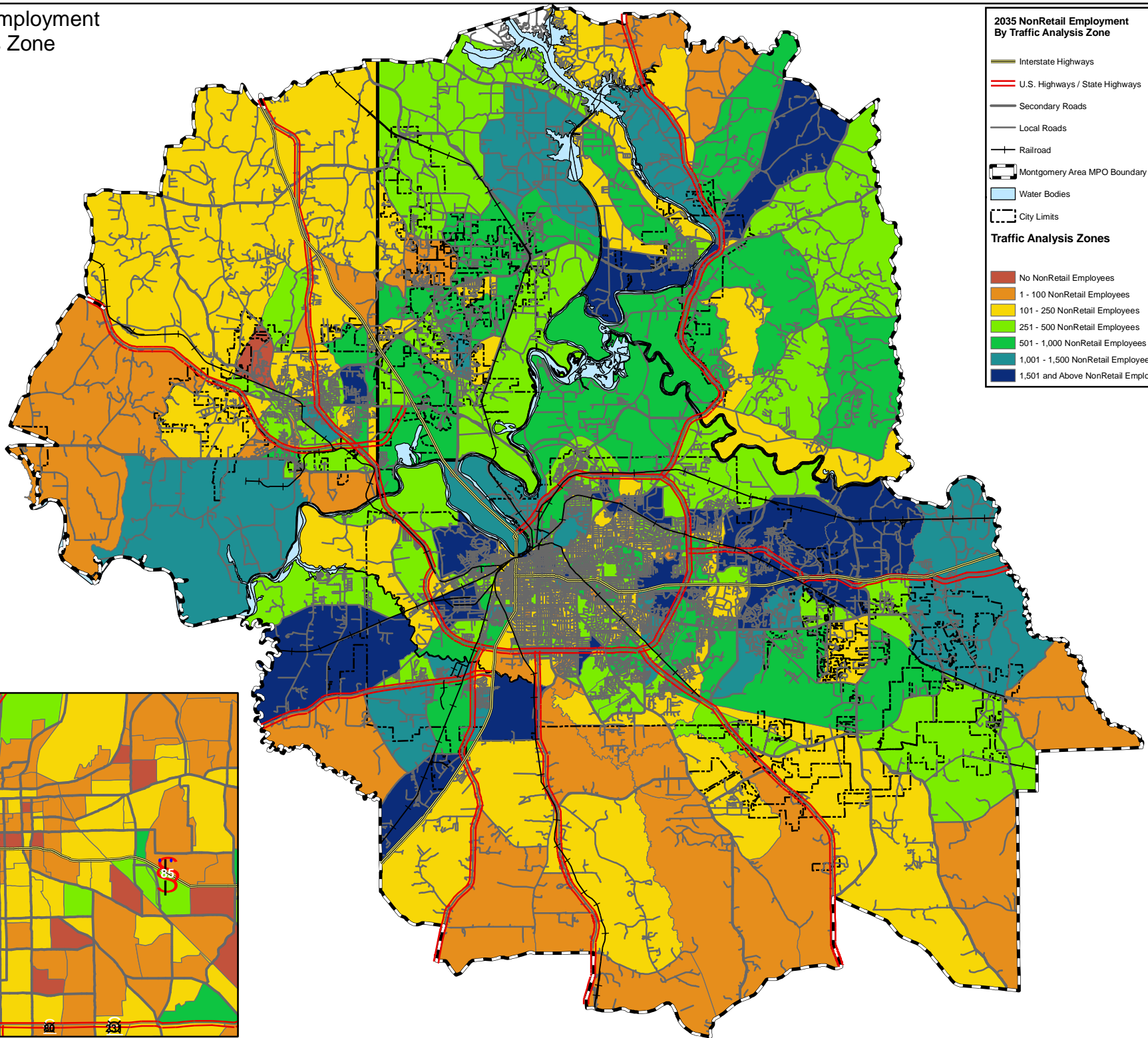
Median Income By Traffic Analysis Zone



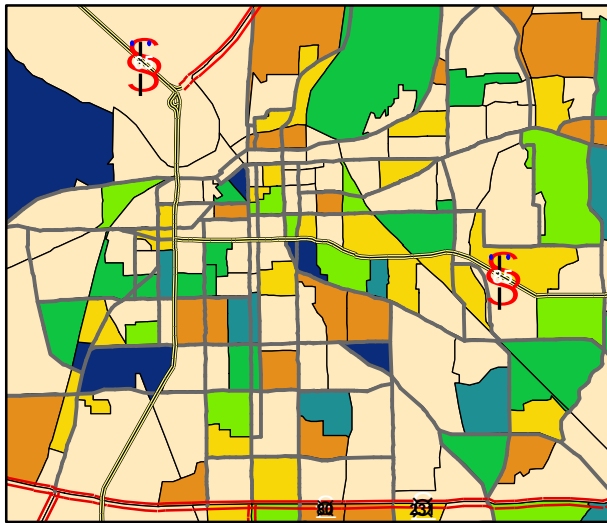
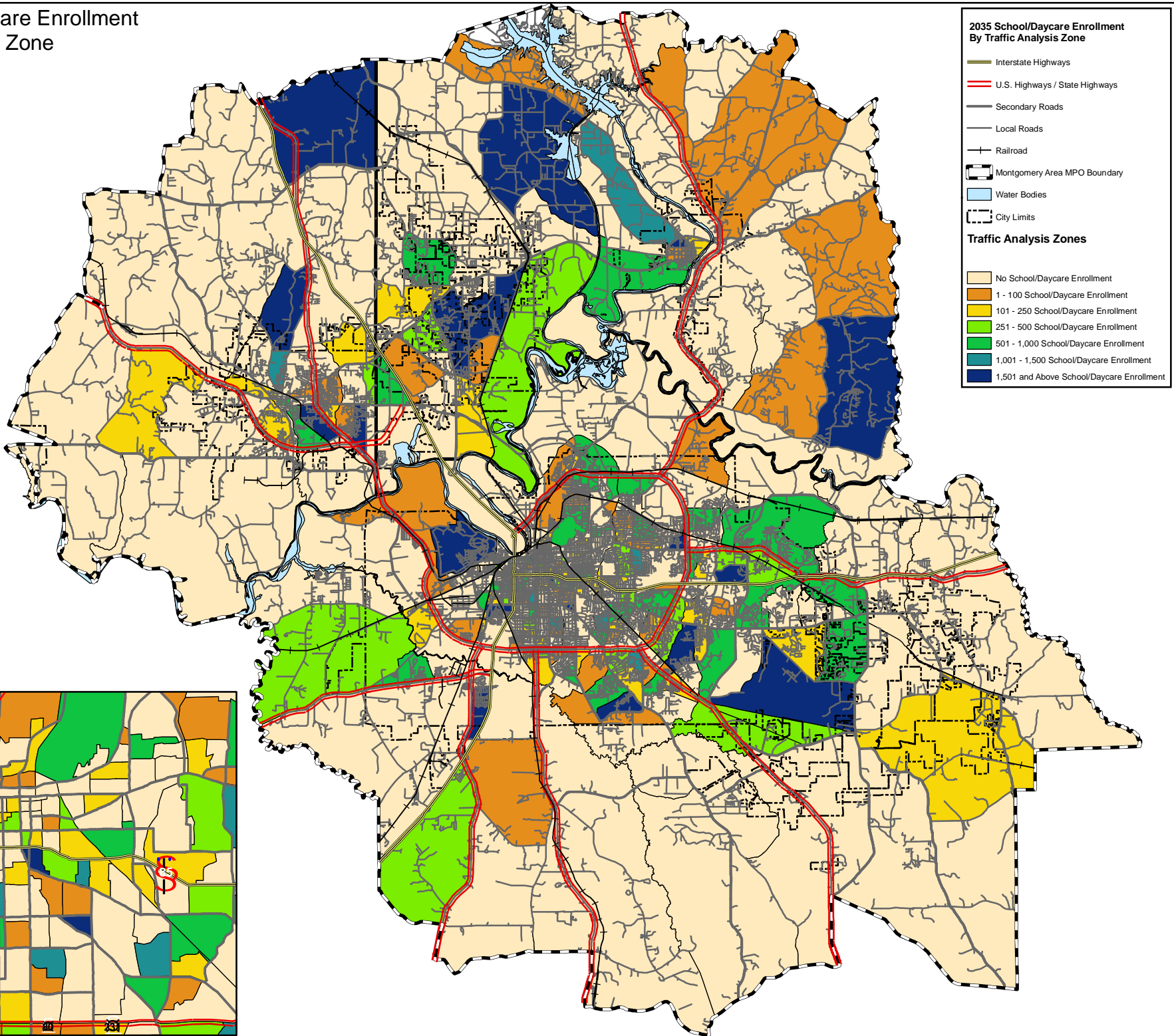
2035 Retail Employment By Traffic Analysis Zone



2035 NonRetail Employment By Traffic Analysis Zone



2035 School/Daycare Enrollment By Traffic Analysis Zone



TAZ	2035 Households	Median Income	2035 Retail Employment	2035 Non-Retail Employment	2035 School/Daycare Enrollment
1	50	\$0	550	1,306	5,094
2	213	\$11,611	37	197	526
3	40	\$0	73	408	0
4	0	\$0	41	108	0
5	0	\$0	71	2,300	213
6	0	\$0	0	925	0
7	0	\$0	1	3,250	0
8	2	\$18,162	78	2,261	0
9	43	\$18,162	38	669	0
10	44	\$18,162	31	2,000	300
11	1	\$11,611	20	1,502	106
12	132	\$18,162	0	2,000	0
13	14	\$17,716	187	100	300
14	234	\$24,602	11	148	0
15	9	\$11,611	3	1,100	0
16	150	\$11,611	30	431	43
17	41	\$11,611	80	140	0
18	22	\$0	250	554	0
19	0	\$0	11	1,200	0
20	15	\$0	750	1,553	0
21	24	\$11,611	31	375	0
22	100	\$11,611	30	220	0
23	200	\$11,033	27	231	0
24	175	\$16,944	30	227	0
25	133	\$16,944	25	283	33
26	150	\$15,476	0	161	685
27	150	\$15,476	45	400	0
28	185	\$22,768	12	116	0
29	263	\$21,857	60	325	120
30	32	\$21,857	115	650	0
31	204	\$9,750	30	70	0
32	252	\$13,462	7	125	686
33	325	\$14,191	80	111	29
34	321	\$17,500	53	189	84
35	179	\$34,032	119	259	1,495
36	415	\$34,032	90	122	0
37	238	\$34,671	85	236	823
38	151	\$34,671	55	60	0
39	302	\$51,583	52	95	0
40	309	\$53,250	0	101	0
41	38	\$53,250	105	251	1,800
42	478	\$46,350	275	230	32
43	289	\$35,446	96	230	75
44	258	\$34,671	5	110	35
45	333	\$51,583	145	139	0
46	234	\$9,453	15	219	7,320
47	117	\$7,619	5	1,500	350
48	58	\$22,667	172	400	1,004
49	210	\$22,667	145	725	138
50	380	\$38,819	0	100	0
51	91	\$38,819	16	53	0
52	82	\$17,716	0	197	121
53	250	\$17,716	12	300	0
54	50	\$17,716	85	2,500	196
55	53	\$8,691	40	350	0
56	102	\$8,691	26	145	277
57	170	\$8,691	36	427	44
58	860	\$24,716	160	426	0
59	290	\$31,589	125	516	0
60	25	\$31,396	630	194	0

TAZ	2035 Households	Median Income	2035 Retail Employment	2035 Non-Retail Employment	2035 School/Daycare Enrollment
61	551	\$31,396	75	477	581
62	490	\$33,060	200	502	0
63	274	\$24,602	160	152	115
64	243	\$24,602	45	425	0
65	336	\$38,563	80	130	0
66	308	\$31,019	14	241	191
67	297	\$31,589	0	225	0
68	133	\$43,875	135	125	0
69	63	\$43,875	0	175	0
70	54	\$43,875	5	39	96
71	0	\$0	0	0	0
72	138	\$47,500	14	1,954	52
73	327	\$47,500	23	175	0
74	0	\$0	50	433	0
75	618	\$27,713	25	275	55
76	1204	\$30,413	51	1,103	556
77	220	\$14,541	30	426	0
78	204	\$43,875	5	125	541
79	539	\$8,796	4	176	0
80	90	\$8,796	80	200	399
81	69	\$8,796	170	674	0
82	175	\$9,142	115	174	0
83	429	\$9,142	36	379	0
84	131	\$4,821	10	325	151
85	320	\$14,464	0	128	0
86	274	\$20,956	10	176	600
87	199	\$19,313	0	61	0
88	100	\$19,313	0	41	0
89	69	\$11,639	0	140	0
90	26	\$11,639	20	50	0
91	84	\$11,639	7	86	143
92	10	\$19,313	0	75	0
93	147	\$11,639	0	143	1,390
94	285	\$24,583	37	134	0
95	219	\$9,388	85	145	0
96	746	\$19,214	0	239	0
97	142	\$9,388	0	275	277
98	186	\$29,122	22	258	65
99	15	\$29,122	0	9	0
100	117	\$29,122	47	108	0
101	285	\$48,816	1	150	500
102	292	\$24,213	25	165	108
103	779	\$19,639	125	400	0
104	503	\$23,690	0	130	0
105	495	\$23,512	123	343	173
106	283	\$20,952	25	130	146
107	76	\$20,952	56	279	489
108	112	\$20,952	20	210	121
109	358	\$55,078	1	125	0
110	375	\$33,237	45	240	0
111	245	\$33,237	150	375	0
112	315	\$25,500	5	250	1,166
113	245	\$25,500	0	100	60
114	265	\$36,477	0	75	0
115	223	\$31,901	40	225	43
116	458	\$36,250	7	282	637
117	161	\$36,477	8	625	98
118	270	\$31,901	3	77	0
119	545	\$36,750	16	278	0
120	183	\$36,750	200	4,439	0

TAZ	2035 Households	Median Income	2035 Retail Employment	2035 Non-Retail Employment	2035 School/Daycare Enrollment
121	241	\$61,176	50	300	656
122	463	\$101,369	30	277	0
123	354	\$61,176	48	350	1,436
124	300	\$91,671	80	125	0
125	247	\$40,714	450	700	154
126	529	\$52,566	400	1,000	0
127	299	\$89,206	0	119	279
128	466	\$84,878	10	210	571
129	257	\$28,056	48	331	0
130	573	\$45,089	12	300	103
131	580	\$41,981	10	350	0
132	879	\$30,377	170	675	285
133	383	\$31,979	19	125	104
134	196	\$35,893	3	68	0
135	129	\$35,893	82	197	74
136	732	\$53,041	11	201	68
137	263	\$48,864	75	275	104
138	227	\$48,864	220	210	24
139	234	\$36,845	5	65	0
140	228	\$36,845	350	700	3,172
141	980	\$37,536	140	400	0
142	1161	\$57,146	7	361	678
143	152	\$55,556	225	6,800	0
144	161	\$55,556	365	324	0
145	1018	\$50,860	7	4,291	0
146	0	\$0	0	0	0
147	0	\$0	15	50	0
148	0	\$0	52	917	753
149	184	\$35,592	79	1,698	0
150	0	\$0	0	50	0
151	295	\$35,592	135	350	915
152	0	\$0	0	1,650	0
153	225	\$35,592	14	120	0
154	352	\$27,344	11	175	28
155	510	\$21,992	315	652	12
156	2	\$21,992	10	1,060	0
157	211	\$10,000	10	300	115
158	24	\$21,992	40	750	0
159	14	\$21,992	85	1,300	0
160	159	\$31,977	100	451	37
161	277	\$21,756	98	118	23
162	179	\$21,756	62	446	0
163	365	\$31,653	380	2,106	0
164	505	\$9,703	0	303	92
165	238	\$7,462	14	496	114
166	184	\$9,142	0	625	775
167	282	\$23,147	100	503	0
168	490	\$32,330	120	1,200	2,273
169	349	\$30,764	0	301	75
170	252	\$20,250	146	3,000	216
171	438	\$15,461	237	190	0
172	1175	\$46,626	0	468	600
173	325	\$36,167	10	355	1,601
174	935	\$44,500	220	755	459
175	991	\$24,436	35	727	1,188
176	385	\$27,500	8	107	0
177	764	\$26,190	4	288	209
178	194	\$48,281	125	275	664
179	456	\$48,281	30	220	120
180	264	\$52,566	100	150	85

TAZ	2035 Households	Median Income	2035 Retail Employment	2035 Non-Retail Employment	2035 School/Daycare Enrollment
181	682	\$35,000	866	729	0
182	601	\$35,000	240	325	0
183	960	\$19,232	590	422	0
184	374	\$22,440	85	1,050	65
185	139	\$19,286	100	527	92
186	663	\$19,286	7	306	687
187	475	\$33,347	15	165	0
188	550	\$70,500	0	222	0
189	384	\$59,087	47	1,453	87
190	225	\$59,087	320	1,301	120
191	388	\$55,089	290	475	187
192	1350	\$53,839	1,600	1,716	839
193	0	\$0	260	863	98
194	0	\$0	95	1,150	0
195	601	\$42,763	290	1,300	571
196	1840	\$40,671	710	552	400
197	1460	\$42,987	14	859	4,776
198	595	\$65,296	5	241	190
199	1241	\$31,676	990	878	460
200	962	\$64,118	55	576	125
201	577	\$79,646	0	104	0
202	328	\$67,869	0	116	40
203	848	\$28,989	165	1,955	0
204	306	\$68,929	390	375	0
205	985	\$52,230	680	1,787	0
206	53	\$52,230	19	16	0
207	376	\$68,636	0	129	0
208	249	\$50,357	40	750	1,298
209	798	\$28,534	750	850	503
210	740	\$34,523	14	576	250
211	56	\$44,792	95	253	0
212	188	\$44,792	150	180	0
213	109	\$40,938	1,350	575	0
214	572	\$19,811	400	370	0
215	624	\$47,835	12	175	0
216	305	\$40,938	45	225	0
217	950	\$54,254	775	2,005	793
218	750	\$45,574	75	274	0
219	566	\$31,977	45	450	0
220	2078	\$32,340	101	7,881	24,847
221	102	\$35,521	3	130	0
222	680	\$34,087	22	336	0
223	300	\$32,917	30	1,713	300
224	120	\$33,224	25	127	104
225	27	\$33,224	80	850	0
226	568	\$31,667	36	475	553
227	249	\$41,500	484	1,250	0
228	863	\$35,439	3	1,259	1,803
229	437	\$26,071	112	182	0
230	82	\$34,550	0	4,485	0
231	47	\$34,550	347	60	0
232	190	\$34,550	15	139	0
233	135	\$42,467	0	66	0
234	18	\$42,467	0	20	0
235	262	\$77,929	56	419	267
236	2426	\$57,212	325	823	656
237	52	\$81,830	25	126	267
238	6200	\$81,830	200	817	3,343
239	3000	\$101,664	23	880	178
240	415	\$77,929	15	119	700

TAZ	2035 Households	Median Income	2035 Retail Employment	2035 Non-Retail Employment	2035 School/Daycare Enrollment
241	1500	\$44,286	50	470	250
242	200	\$47,083	0	91	0
243	70	\$45,406	5	89	0
244	140	\$48,875	40	1,008	0
245	160	\$10,813	300	556	0
246	155	\$62,260	700	1,805	720
247	925	\$45,500	82	2,963	0
248	125	\$45,500	83	1,703	0
249	1140	\$51,250	175	389	0
250	4500	\$34,783	200	1,109	0
251	225	\$48,500	3	115	0
252	83	\$67,847	37	72	0
253	175	\$67,847	0	80	0
254	350	\$111,989	40	181	0
255	625	\$67,869	400	575	0
256	960	\$90,926	40	1,276	0
257	350	\$70,290	49	439	0
258	4515	\$70,290	900	2,097	705
259	3071	\$56,250	325	6,650	360
260	56	\$56,250	25	330	6,479
261	450	\$25,163	750	640	0
262	310	\$45,574	256	296	73
263	4	\$25,163	141	378	753
264	0	\$0	3	125	753
265	825	\$28,750	0	341	600
266	127	\$28,750	8	45	0
267	442	\$26,518	5	425	225
268	725	\$23,321	19	306	29
269	500	\$27,563	5	200	1475
270	348	\$37,656	15	335	0
271	63	\$37,656	100	470	932
272	60	\$37,656	65	400	0
273	474	\$32,043	25	400	728
274	239	\$32,043	0	10	0
275	503	\$32,043	100	500	0
276	1000	\$39,926	252	1500	1864
277	219	\$45,682	0	0	0
278	256	\$45,682	0	0	0
279	211	\$26,098	20	300	190
280	90	\$26,098	0	135	0
281	1025	\$50,357	30	200	0
282	217	\$31,548	100	250	71
283	135	\$34,548	409	750	0
284	24	\$34,548	18	87	0
285	370	\$55,500	50	120	0
286	1130	\$48,346	191	400	75
287	287	\$28,333	100	450	160
288	788	\$52,031	35	230	50
289	530	\$64,706	500	600	1726
290	427	\$64,706	250	250	0
291	2500	\$57,976	200	750	107
292	1789	\$64,706	270	1600	0
293	1453	\$64,706	1,000	1000	296
294	1055	\$57,109	100	350	105
295	172	\$57,109	20	50	62
296	100	\$57,109	0	40	0
297	180	\$25,240	100	100	0
298	249	\$25,240	67	1000	0
299	24	\$42,093	8	300	0
300	579	\$42,093	0	1244	0

TAZ	2035 Households	Median Income	2035 Retail Employment	2035 Non-Retail Employment	2035 School/Daycare Enrollment
301	1420	\$42,093	22	230	0
302	657	\$42,404	0	120	0
303	423	\$42,404	44	171	0
304	500	\$42,404	5	84	0
305	1119	\$57,976	10	300	2388
306	512	\$57,976	11	144	0
307	35	\$42,404	3	90	0
308	650	\$40,571	358	249	0
309	1,850	\$37,717	1,424	560	50
310	1,200	\$37,717	270	360	481
311	450	\$31,731	67	1,018	1,800
312	145	\$37,500	13	187	58
313	800	\$45,093	70	811	1,600
314	341	\$37,500	3	518	1,950
315	216	\$28,125	16	321	337
316	2,100	\$49,738	20	20	800
317	650	\$52,143	28	550	0
318	371	\$38,631	36	473	124
319	624	\$45,938	289	762	0
320	300	\$40,905	0	87	0
321	944	\$40,905	58	918	20
322	700	\$37,031	129	1,731	20
323	1,000	\$37,031	46	343	0
324	1,250	\$53,917	20	263	40
325	2,910	\$62,019	10	516	2,100
326	1,250	\$62,019	7	453	40
327	371	\$67,500	20	250	0
328	750	\$67,500	733	704	0
329	575	\$40,938	219	514	0
330	66	\$40,938	390	1,581	0
331	6	\$53,917	3	227	0
332	78	\$62,019	18	128	0
333	65	\$25,273	0	638	2,700
334	251	\$27,083	4	324	118
335	318	\$25,273	7	485	65
336	330	\$35,884	76	216	0
337	450	\$35,884	18	784	1,500
338	700	\$41,607	43	608	0
339	825	\$28,571	57	1,291	0
340	156	\$28,571	18	106	39
341	250	\$26,970	15	1,900	732
342	300	\$35,884	4	153	0
343	70	\$34,850	5	52	0
344	500	\$52,279	5	213	0
345	761	\$37,361	18	271	0
346	900	\$51,818	90	417	90
347	1462	\$39,375	7	185	2363
348	554	\$47,875	0	131	0
349	443	\$47,000	10	245	0
350	160	\$21,360	1	50	0
351	450	\$30,486	0	21	0
352	1,000	\$38,214	1,302	670	0
353	0	\$0	200	40	0
354	1,000	\$38,214	1,186	500	589
355	674	\$49,738	12	133	0
356	1,775	\$40,571	1,000	696	150
357	131	\$42,093	7	86	212
358	963	\$36,250	52	215	0
359	1,030	\$52,143	43	275	0
360	928	\$47,000	15	155	0

TAZ	2035 Households	Median Income	2035 Retail Employment	2035 Non-Retail Employment	2035 School/Daycare Enrollment
361	13	\$57,976	0	8	0
362	392	\$37,717	20	120	0
363	269	\$49,738	10	10	0
364	400	\$51,932	0	150	0
365	600	\$53,917	127	521	0
366	1,100	\$37,700	10	1,256	2,550
367	100	\$45,406	175	2,507	0
368	300	\$46,406	8	236	481
369	60	\$47,083	0	23	0
370	120	\$47,083	0	57	0
371	320	\$42,467	4	182	98
372	825	\$57,212	21	175	0
373	105	\$48,500	45	110	0
374	90	\$48,500	11	35	0
375	3400	\$81,830	395	1,185	0
376	230	\$34,550	48	195	6
377	35	\$34,550	27	18	0
378	125	\$67,847	0	58	0
379	145	\$67,847	7	74	0
380	22	\$67,847	0	12	0
381	350	\$67,847	50	173	0
382	1250	\$51,250	60	274	0
383	200	\$44,286	60	747	0
384	90	\$44,286	0	26	0
385	648	\$33,347	225	825	193
386	1375	\$90,926	4,435	3,507	770
387	1250	\$58,359	25	422	0