

Montgomery Metropolitan Planning Organization (MPO)

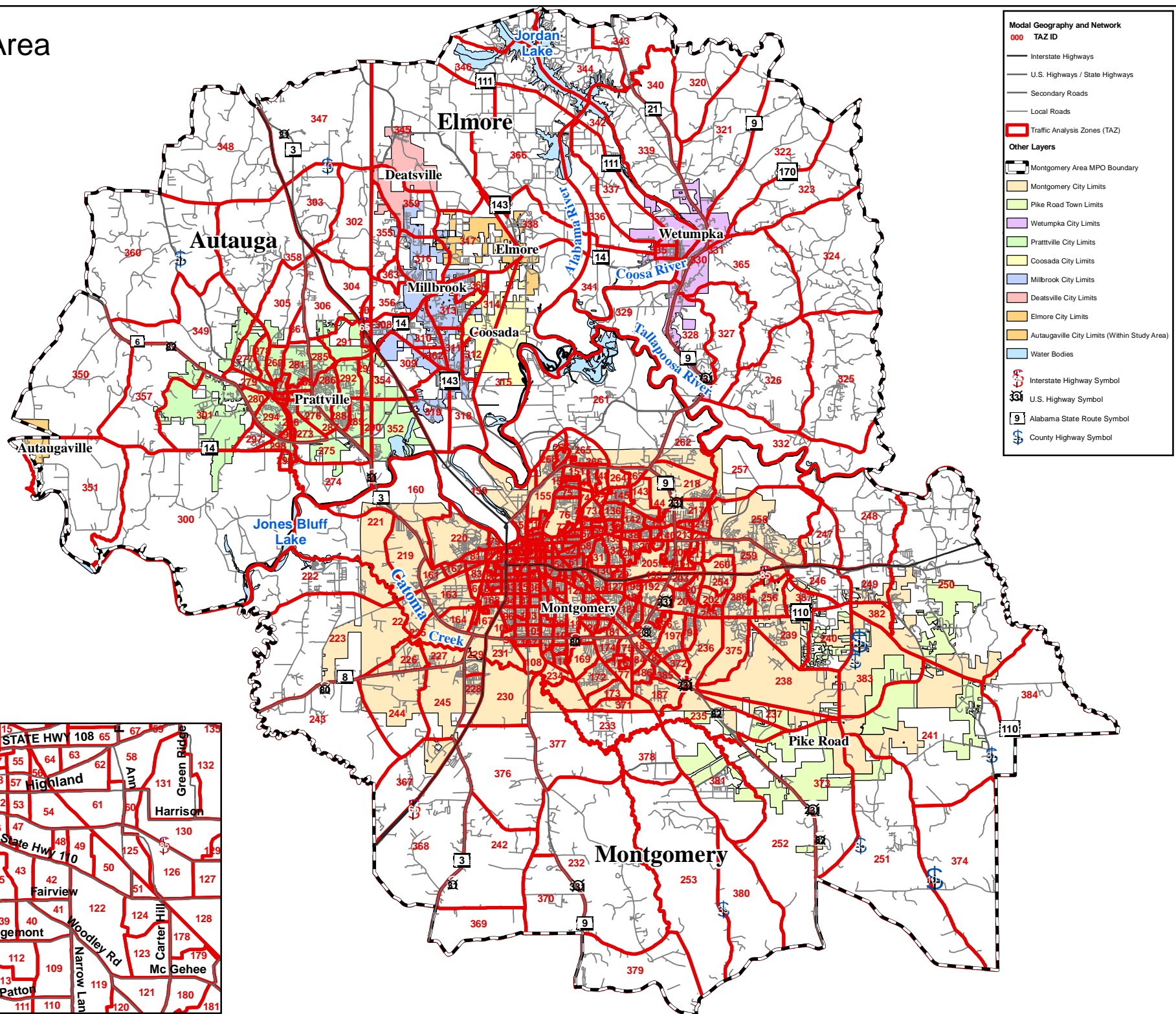
Long Range Transportation Plan

Forecast Year 2035 Socioeconomic Data

April 2009

Prepared by MPO Staff

# Study Area

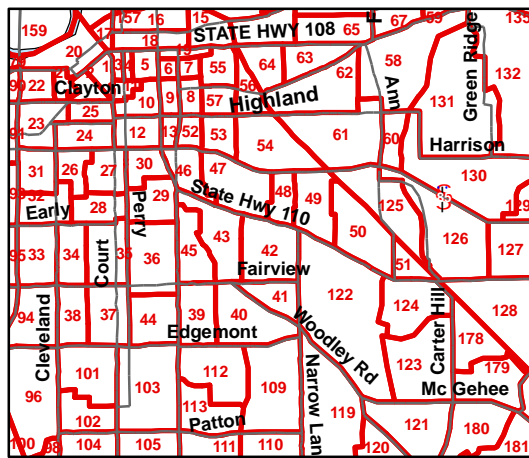


**Modal Geography and Network**

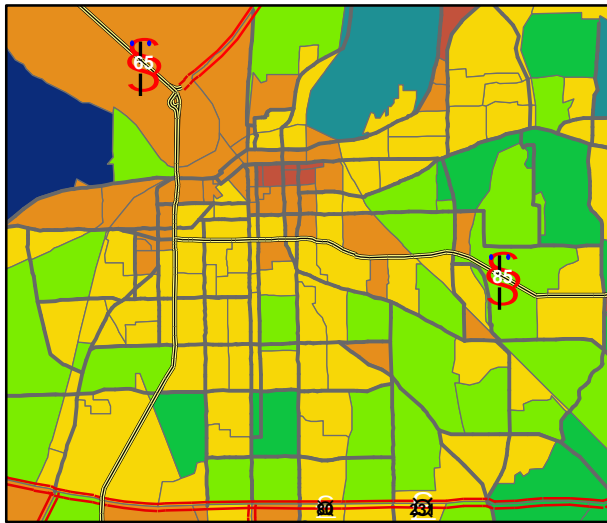
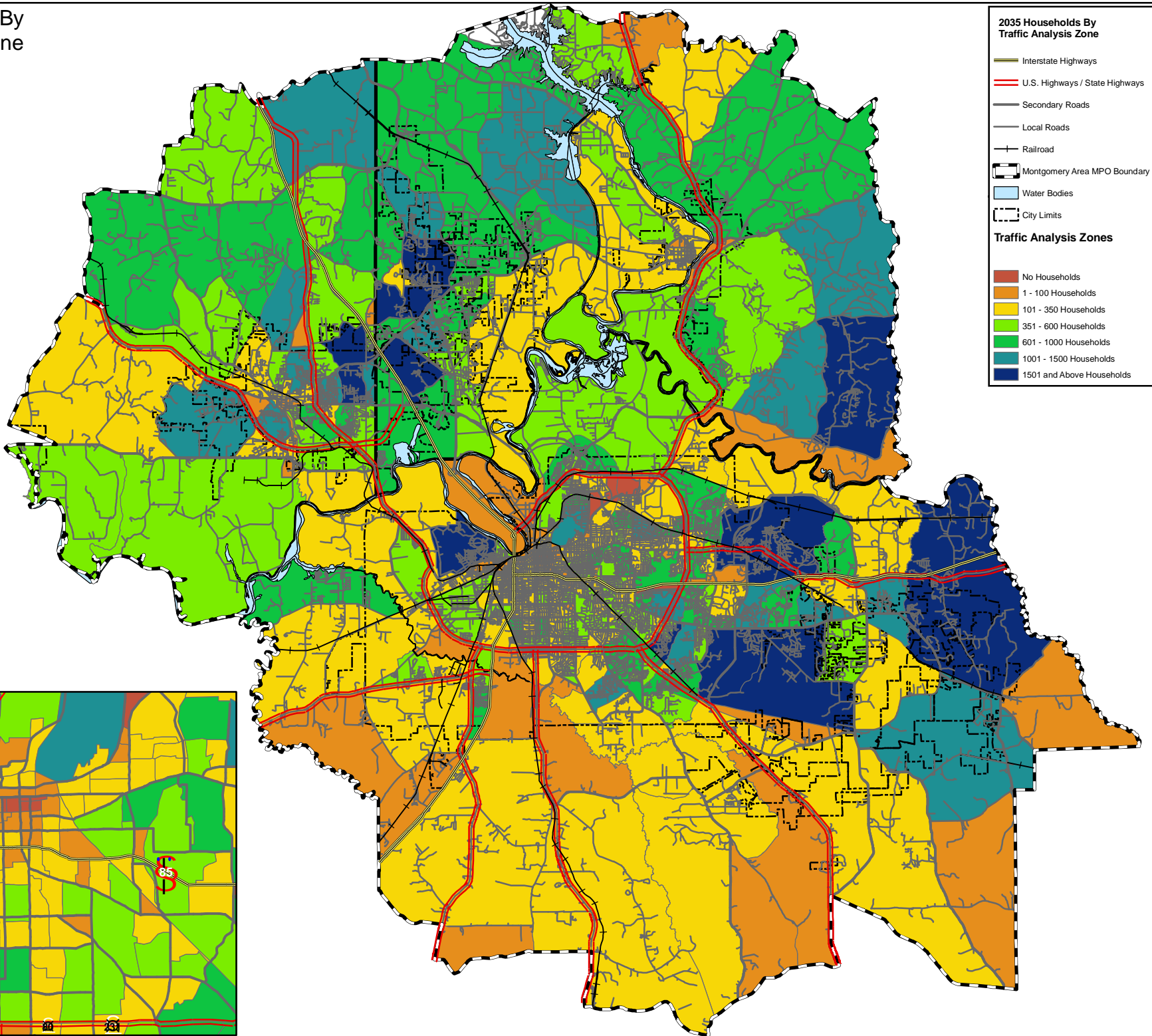
- 000 TAZ ID
- Interstate Highways
- U.S. Highways / State Highways
- Secondary Roads
- Local Roads
- Traffic Analysis Zones (TAZ)

**Other Layers**

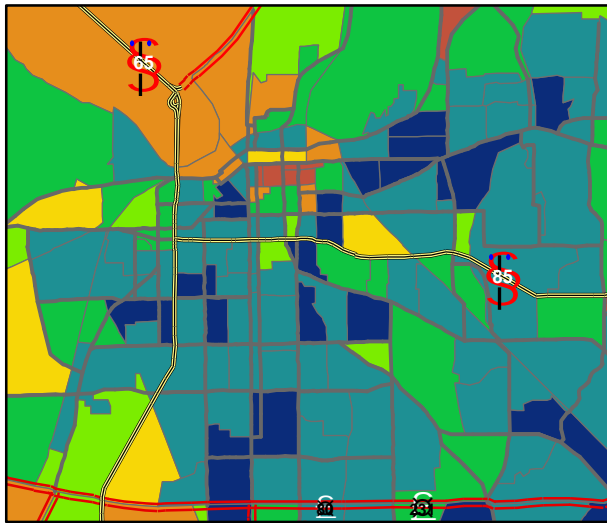
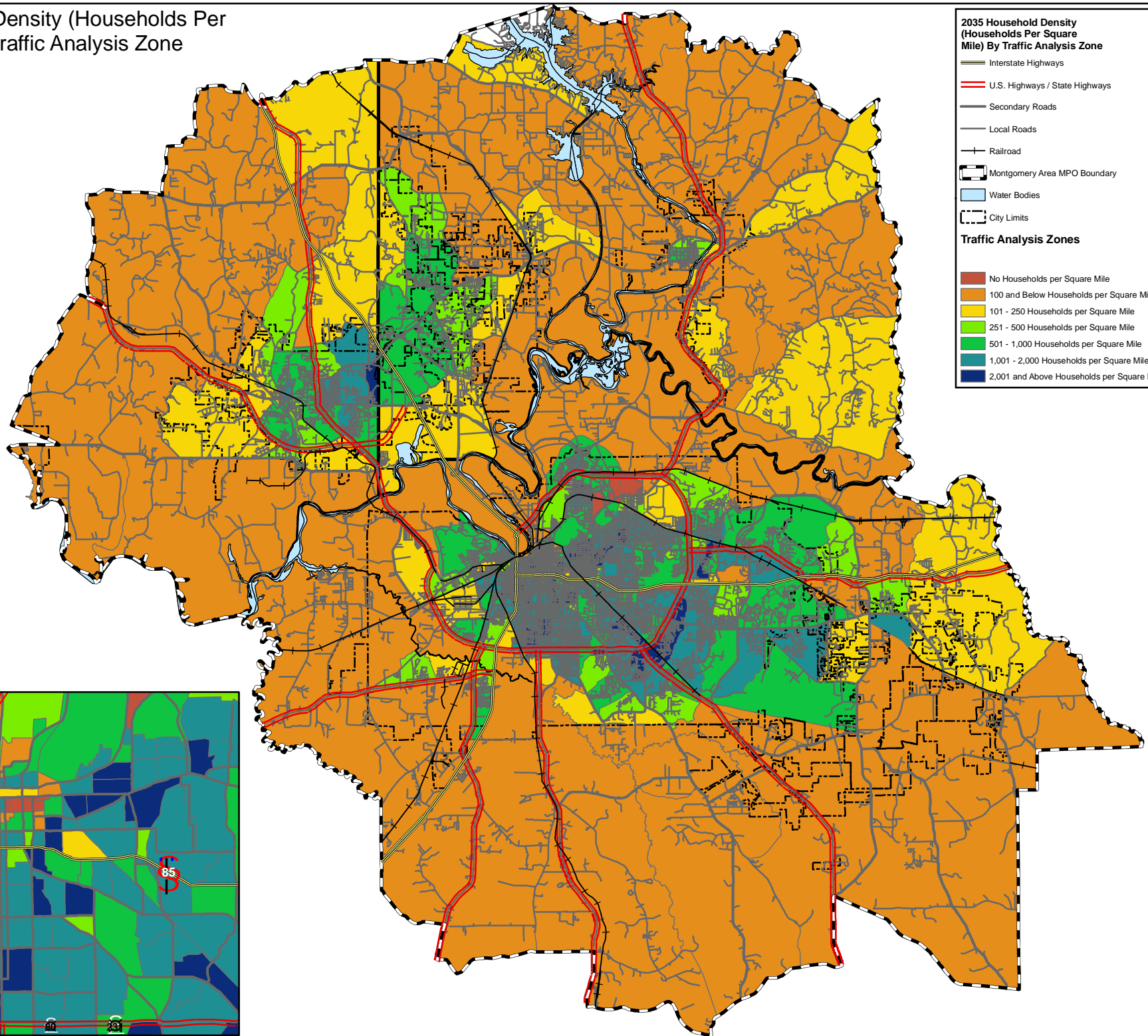
- Montgomery Area MPO Boundary
- Montgomery City Limits
- Pike Road Town Limits
- Wetumpka City Limits
- Prattville City Limits
- Coosada City Limits
- Millbrook City Limits
- Deatsville City Limits
- Elmore City Limits
- Autaugaville City Limits (Within Study Area)
- Water Bodies
- Interstate Highway Symbol
- U.S. Highway Symbol
- Alabama State Route Symbol
- County Highway Symbol



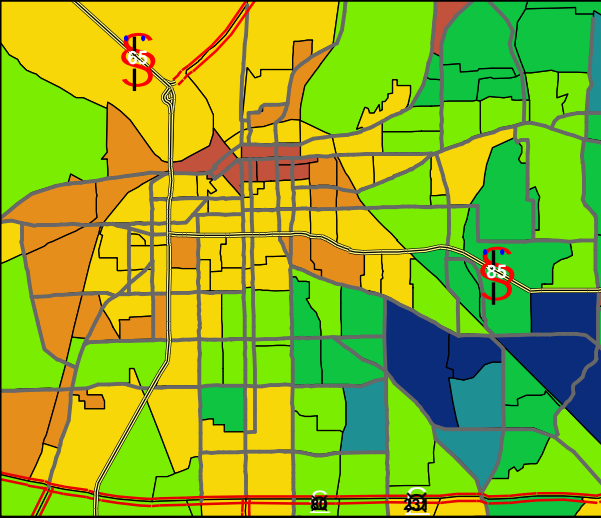
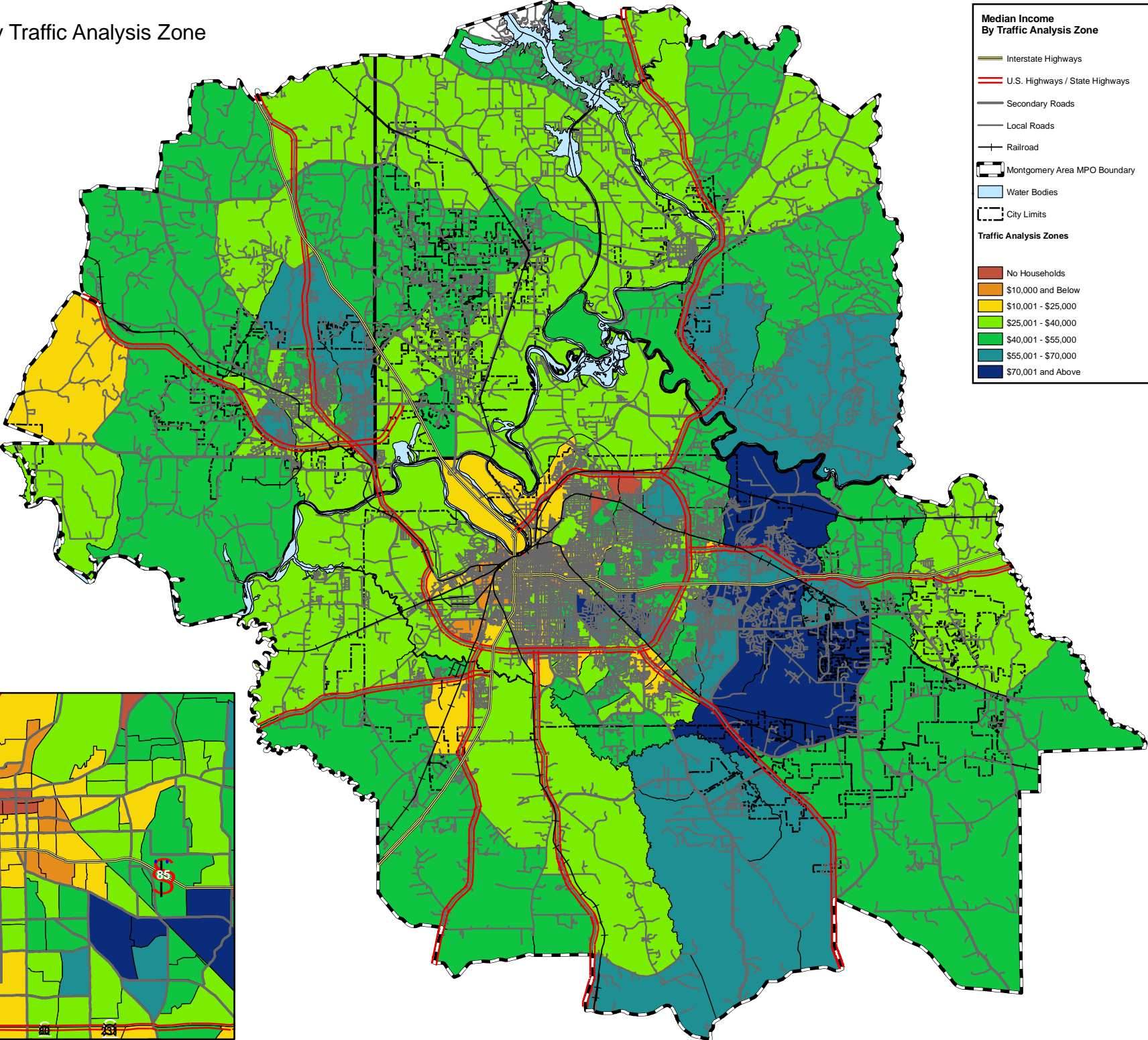
# 2035 Households By Traffic Analysis Zone



# 2035 Household Density (Households Per Square Mile) By Traffic Analysis Zone



# Median Income By Traffic Analysis Zone



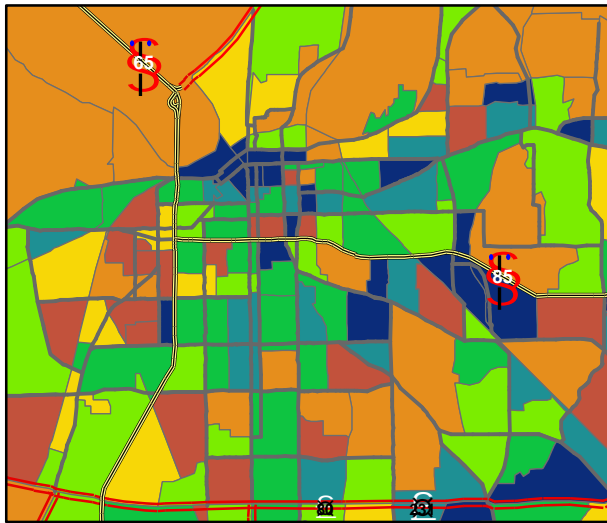
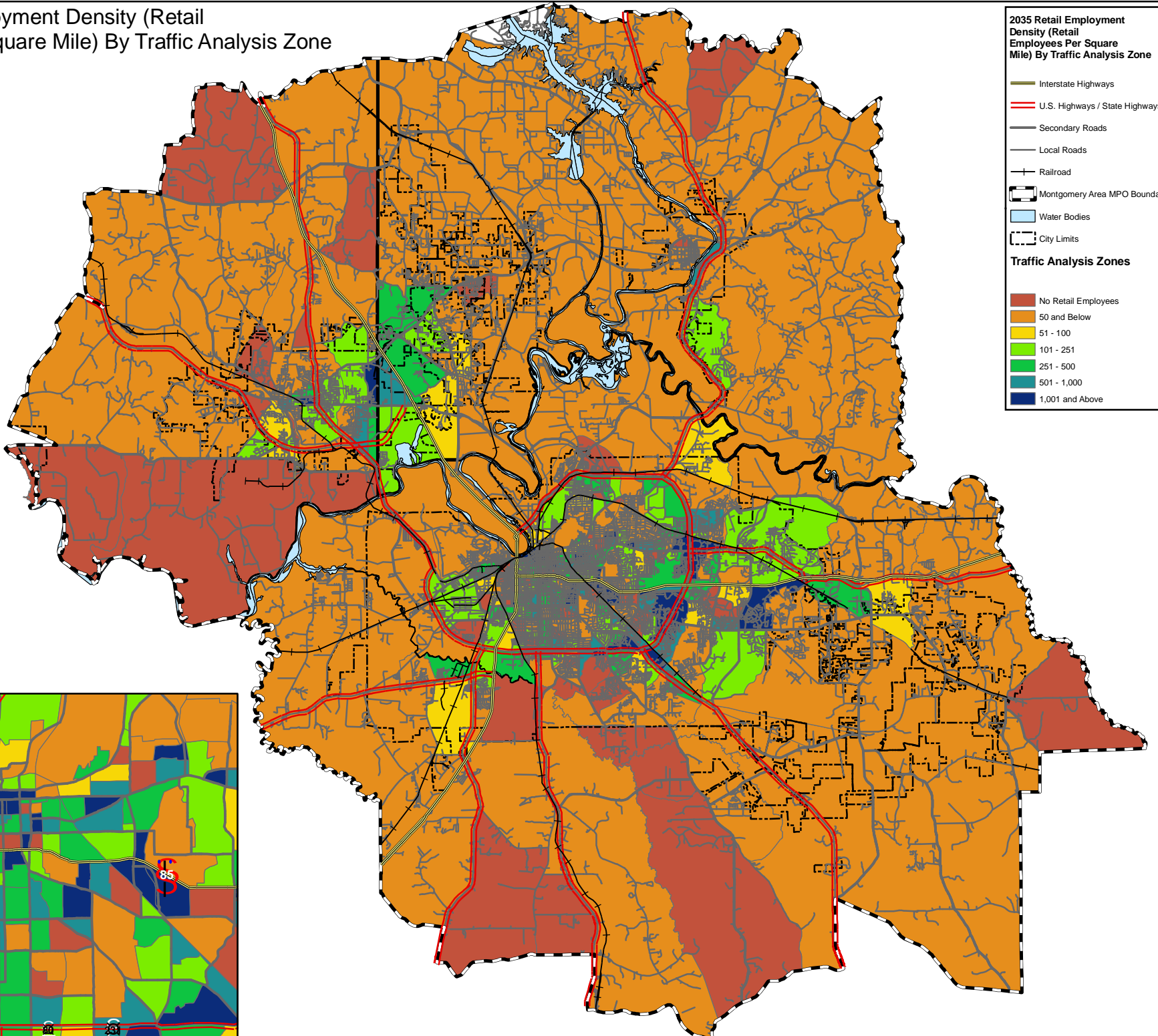
# 2035 Retail Employment Density (Retail Employees Per Square Mile) By Traffic Analysis Zone

**2035 Retail Employment Density (Retail Employees Per Square Mile) By Traffic Analysis Zone**

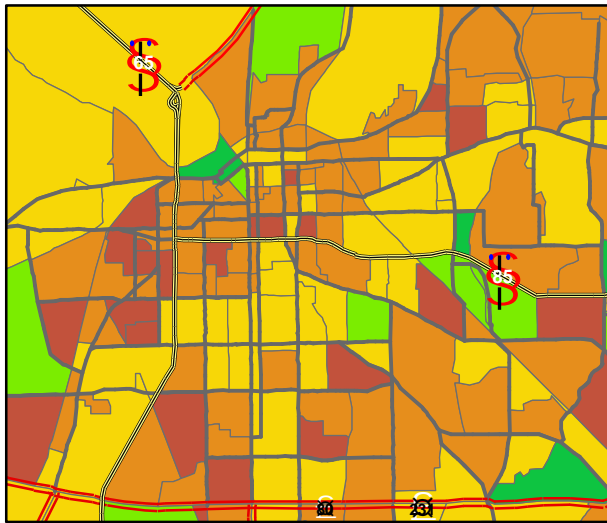
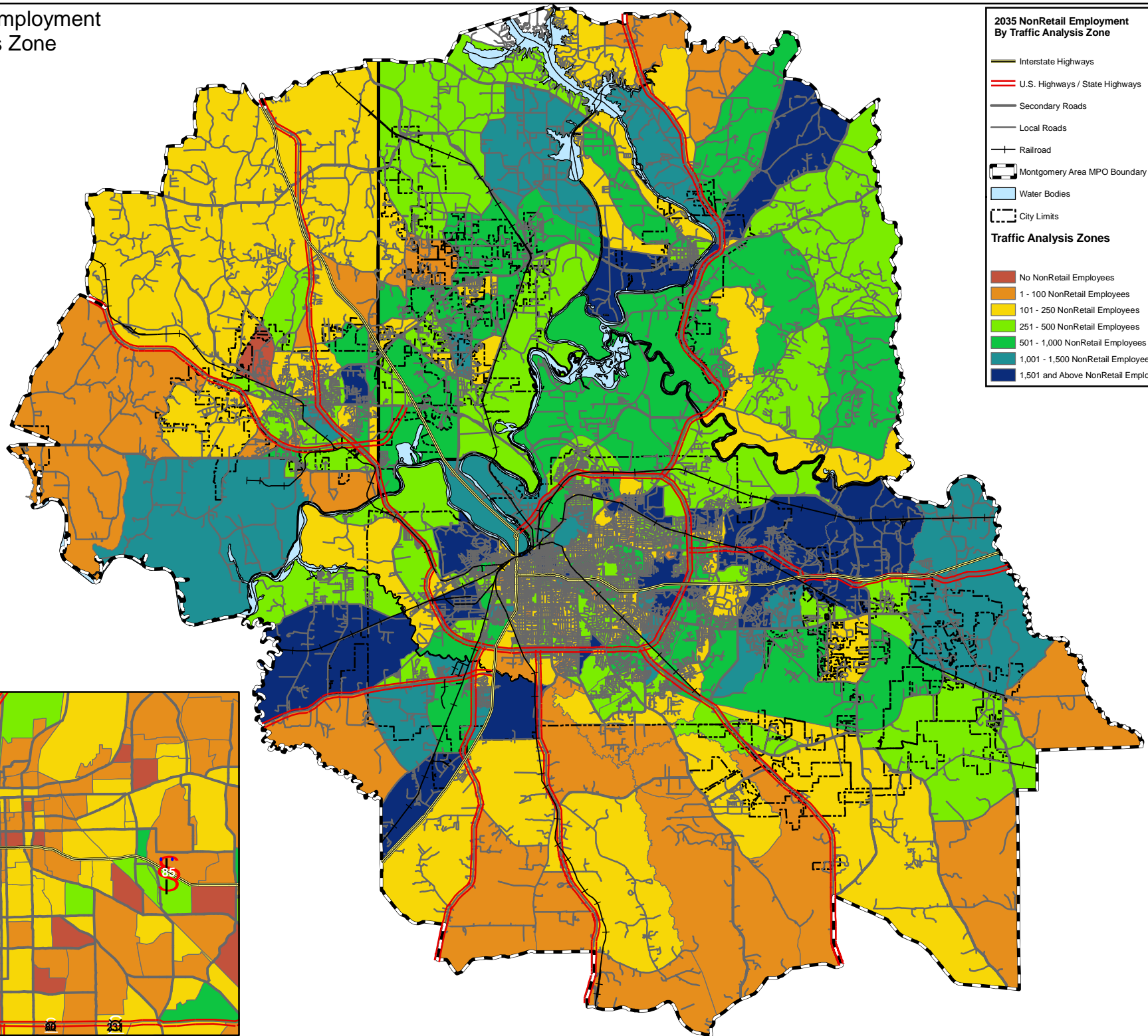
- Interstate Highways
- U.S. Highways / State Highways
- Secondary Roads
- Local Roads
- Railroad
- Montgomery Area MPO Boundary
- Water Bodies
- City Limits

**Traffic Analysis Zones**

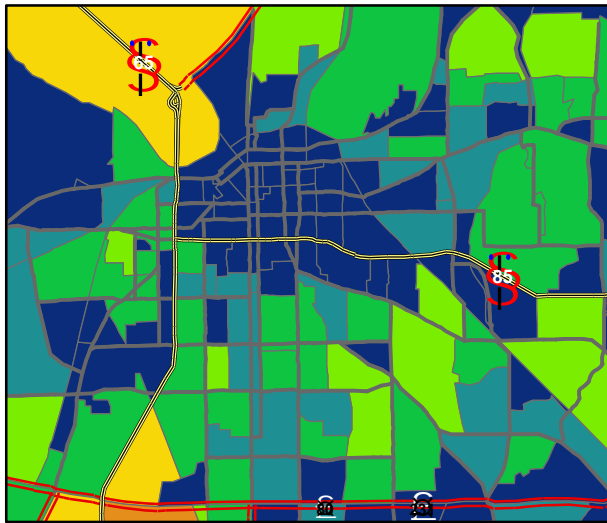
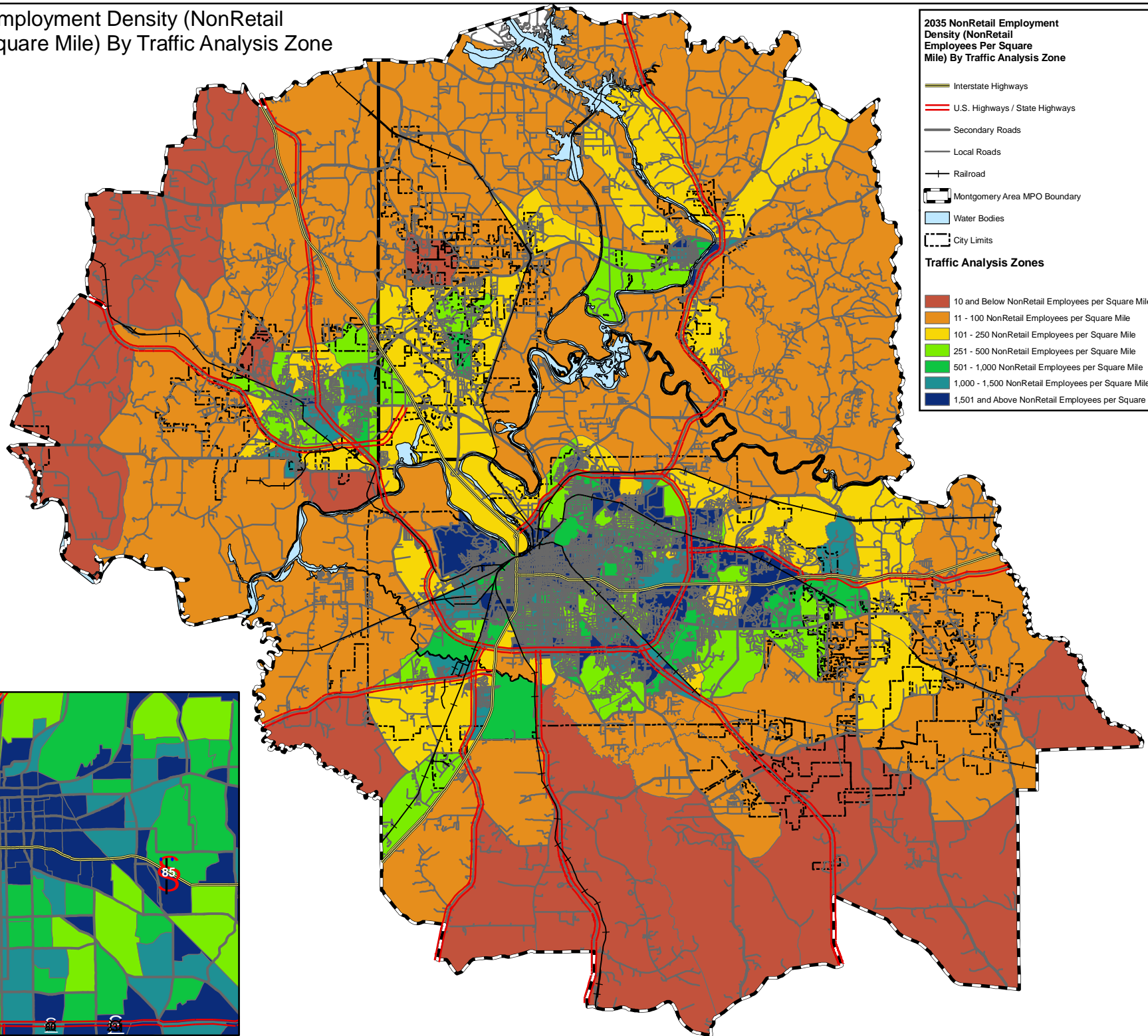
- No Retail Employees
- 50 and Below
- 51 - 100
- 101 - 251
- 251 - 500
- 501 - 1,000
- 1,001 and Above



# 2035 NonRetail Employment By Traffic Analysis Zone

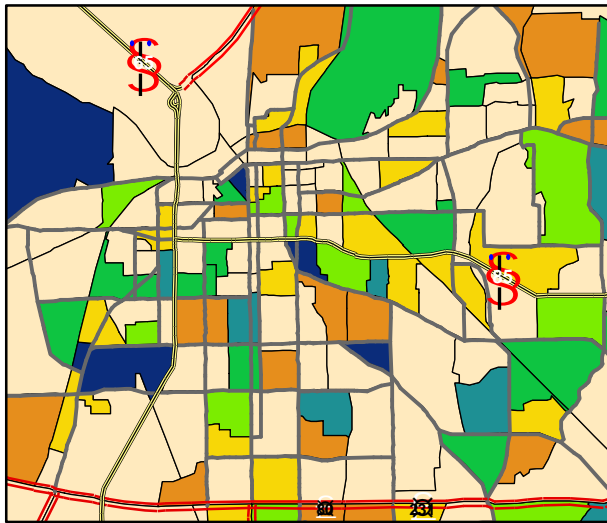
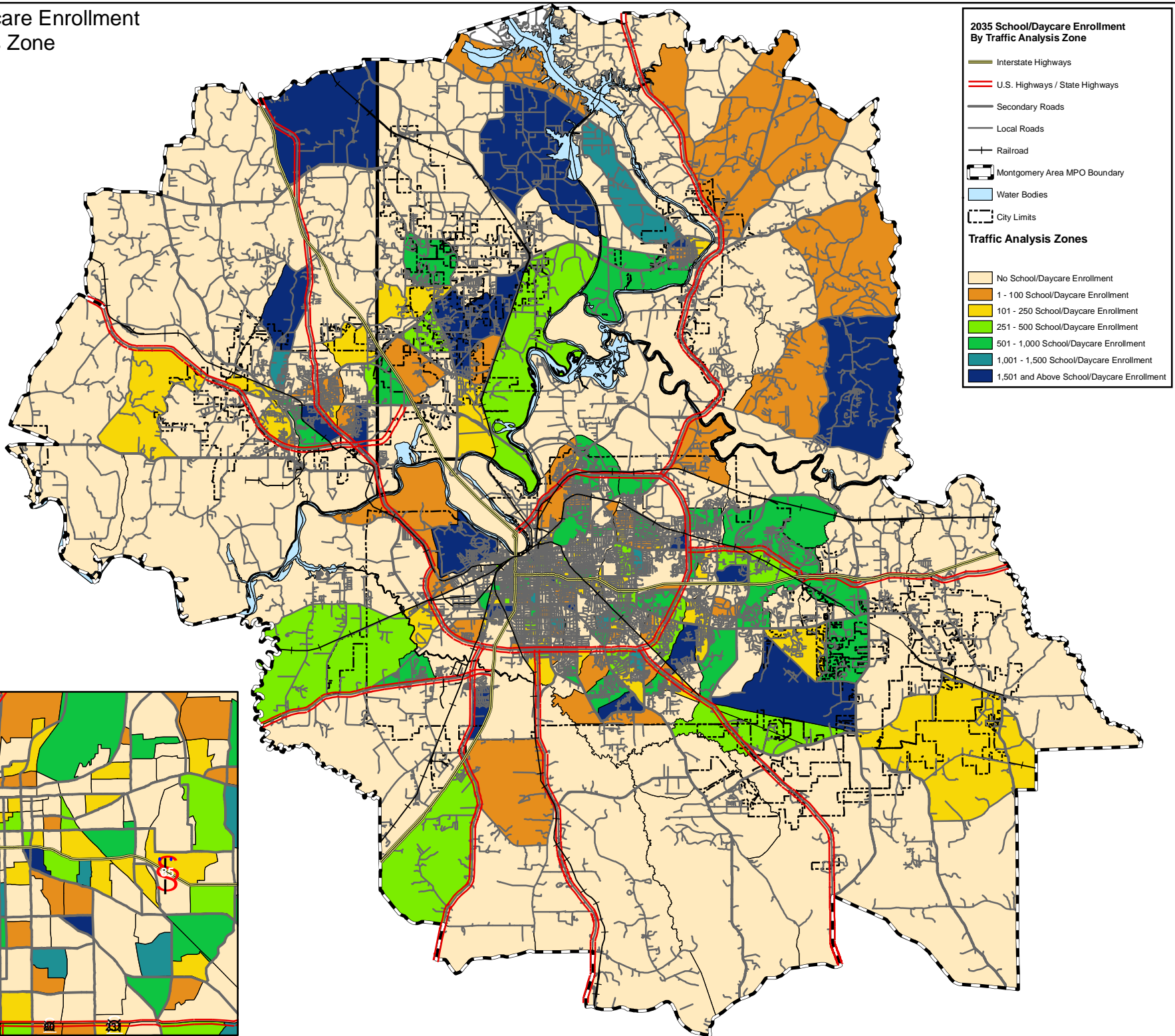


# 2035 NonRetail Employment Density (NonRetail Employees Per Square Mile) By Traffic Analysis Zone

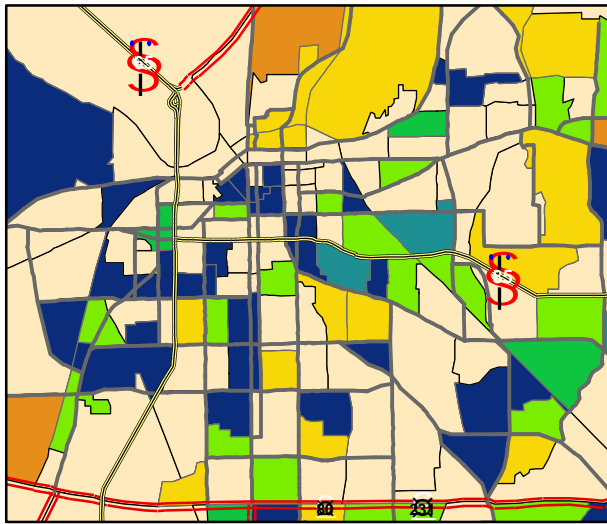
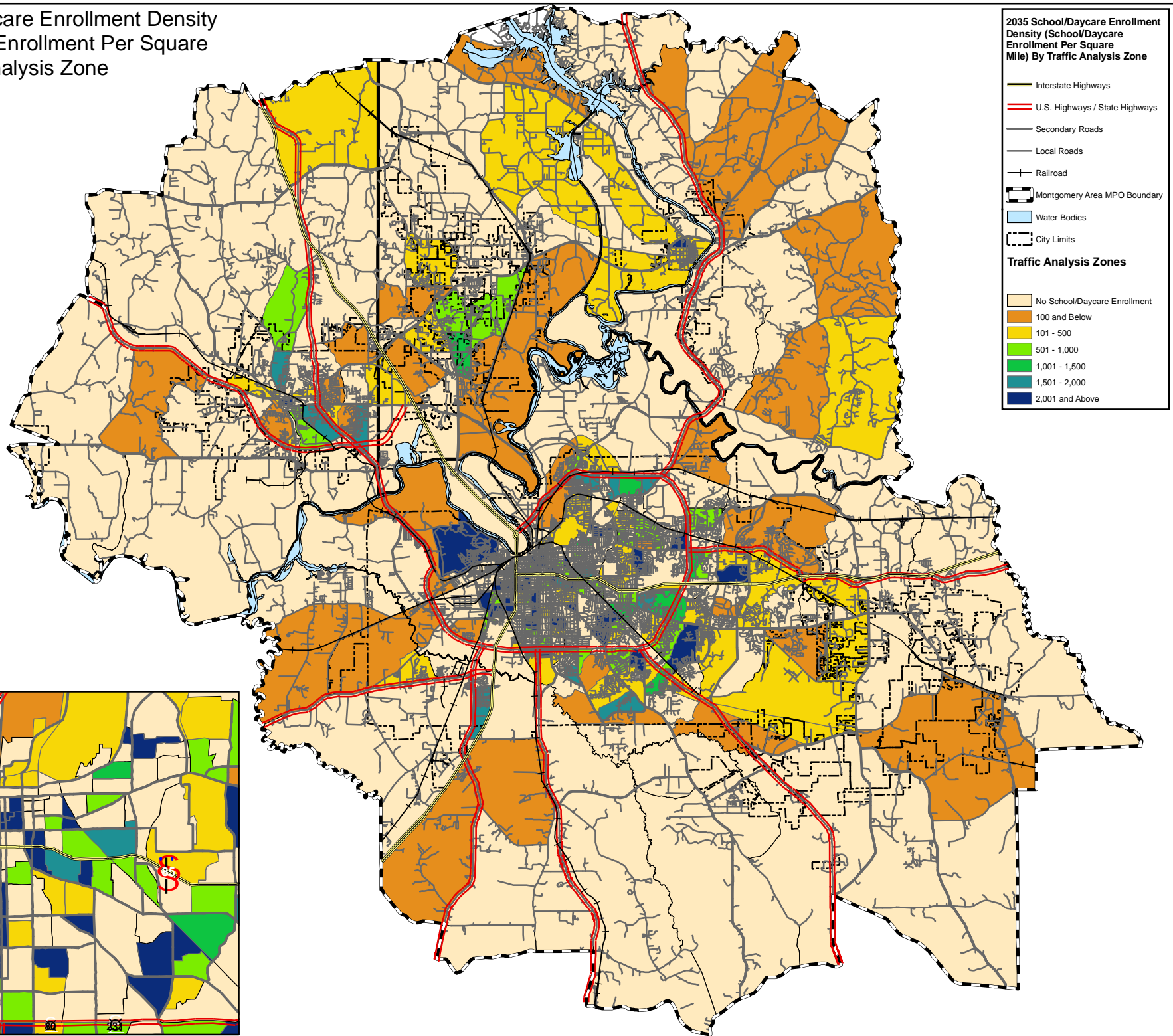




# 2035 School/Daycare Enrollment By Traffic Analysis Zone



2035 School/Daycare Enrollment Density  
 (School/Daycare Enrollment Per Square  
 Mile) By Traffic Analysis Zone



TAZ	2035 Households	Median Income	2035 Retail Employment	2035 Non-Retail Employment	2035 School/Daycare Enrollment
1	50	\$0	550	1,306	5,094
2	213	\$11,611	37	197	526
3	40	\$0	73	408	0
4	0	\$0	41	108	0
5	0	\$0	71	2,300	213
6	0	\$0	0	925	0
7	0	\$0	1	3,250	0
8	2	\$18,162	78	2,261	0
9	43	\$18,162	38	669	0
10	44	\$18,162	31	2,000	300
11	1	\$11,611	20	1,502	106
12	132	\$18,162	0	2,000	0
13	14	\$17,716	187	100	300
14	234	\$24,602	11	148	0
15	9	\$11,611	3	1,100	0
16	150	\$11,611	30	431	43
17	41	\$11,611	80	140	0
18	22	\$0	250	554	0
19	0	\$0	11	1,200	0
20	15	\$0	750	1,553	0
21	24	\$11,611	31	375	0
22	100	\$11,611	30	220	0
23	200	\$11,033	27	231	0
24	175	\$16,944	30	227	0
25	133	\$16,944	25	283	33
26	150	\$15,476	0	161	685
27	150	\$15,476	45	400	0
28	185	\$22,768	12	116	0
29	263	\$21,857	60	325	120
30	32	\$21,857	115	650	0
31	204	\$9,750	30	70	0
32	252	\$13,462	7	125	686
33	325	\$14,191	80	111	29
34	321	\$17,500	53	189	84
35	179	\$34,032	119	259	1,495
36	415	\$34,032	90	122	0
37	238	\$34,671	85	236	823
38	151	\$34,671	55	60	0
39	302	\$51,583	52	95	0
40	309	\$53,250	0	101	0
41	38	\$53,250	105	251	1,800
42	478	\$46,350	275	230	32
43	289	\$35,446	96	230	75
44	258	\$34,671	5	110	35
45	333	\$51,583	145	139	0
46	234	\$9,453	15	219	7,320
47	117	\$7,619	5	1,500	350
48	58	\$22,667	172	400	1,004
49	210	\$22,667	145	725	138
50	380	\$38,819	0	100	0
51	91	\$38,819	16	53	0
52	82	\$17,716	0	197	121
53	250	\$17,716	12	300	0
54	50	\$17,716	85	2,500	196
55	53	\$8,691	40	350	0
56	102	\$8,691	26	145	277
57	170	\$8,691	36	427	44
58	860	\$24,716	160	426	0
59	290	\$31,589	125	516	0
60	25	\$31,396	630	194	0

TAZ	2035 Households	Median Income	2035 Retail Employment	2035 Non-Retail Employment	2035 School/Daycare Enrollment
61	551	\$31,396	75	477	581
62	490	\$33,060	200	502	0
63	274	\$24,602	160	152	115
64	243	\$24,602	45	425	0
65	336	\$38,563	80	130	0
66	308	\$31,019	14	241	191
67	297	\$31,589	0	225	0
68	133	\$43,875	135	125	0
69	63	\$43,875	0	175	0
70	54	\$43,875	5	39	96
71	0	\$0	0	0	0
72	138	\$47,500	14	1,954	52
73	327	\$47,500	23	175	0
74	0	\$0	50	433	0
75	618	\$27,713	25	275	55
76	1204	\$30,413	51	1,103	556
77	220	\$14,541	30	426	0
78	204	\$43,875	5	125	541
79	539	\$8,796	4	176	0
80	90	\$8,796	80	200	399
81	69	\$8,796	170	674	0
82	175	\$9,142	115	174	0
83	429	\$9,142	36	379	0
84	131	\$4,821	10	325	151
85	320	\$14,464	0	128	0
86	274	\$20,956	10	176	600
87	199	\$19,313	0	61	0
88	100	\$19,313	0	41	0
89	69	\$11,639	0	140	0
90	26	\$11,639	20	50	0
91	84	\$11,639	7	86	143
92	10	\$19,313	0	75	0
93	147	\$11,639	0	143	1,390
94	285	\$24,583	37	134	0
95	219	\$9,388	85	145	0
96	746	\$19,214	0	239	0
97	142	\$9,388	0	275	277
98	186	\$29,122	22	258	65
99	15	\$29,122	0	9	0
100	117	\$29,122	47	108	0
101	285	\$48,816	1	150	500
102	292	\$24,213	25	165	108
103	779	\$19,639	125	400	0
104	503	\$23,690	0	130	0
105	495	\$23,512	123	343	173
106	283	\$20,952	25	130	146
107	76	\$20,952	56	279	489
108	112	\$20,952	20	210	121
109	358	\$55,078	1	125	0
110	375	\$33,237	45	240	0
111	245	\$33,237	150	375	0
112	315	\$25,500	5	250	1,166
113	245	\$25,500	0	100	60
114	265	\$36,477	0	75	0
115	223	\$31,901	40	225	43
116	458	\$36,250	7	282	637
117	161	\$36,477	8	625	98
118	270	\$31,901	3	77	0
119	545	\$36,750	16	278	0
120	183	\$36,750	200	4,439	0

<b>TAZ</b>	<b>2035 Households</b>	<b>Median Income</b>	<b>2035 Retail Employment</b>	<b>2035 Non-Retail Employment</b>	<b>2035 School/Daycare Enrollment</b>
121	241	\$61,176	50	300	656
122	463	\$101,369	30	277	0
123	354	\$61,176	48	350	1,436
124	300	\$91,671	80	125	0
125	247	\$40,714	450	700	154
126	529	\$52,566	400	1,000	0
127	299	\$89,206	0	119	279
128	466	\$84,878	10	210	571
129	257	\$28,056	48	331	0
130	573	\$45,089	12	300	103
131	580	\$41,981	10	350	0
132	879	\$30,377	170	675	285
133	383	\$31,979	19	125	104
134	196	\$35,893	3	68	0
135	129	\$35,893	82	197	74
136	732	\$53,041	11	201	68
137	263	\$48,864	75	275	104
138	227	\$48,864	220	210	24
139	234	\$36,845	5	65	0
140	228	\$36,845	350	700	3,172
141	980	\$37,536	140	400	0
142	1161	\$57,146	7	361	678
143	152	\$55,556	225	6,800	0
144	161	\$55,556	365	324	0
145	1018	\$50,860	7	4,291	0
146	0	\$0	0	0	0
147	0	\$0	15	50	0
148	0	\$0	52	917	753
149	184	\$35,592	79	1,698	0
150	0	\$0	0	50	0
151	295	\$35,592	135	350	915
152	0	\$0	0	1,650	0
153	225	\$35,592	14	120	0
154	352	\$27,344	11	175	28
155	510	\$21,992	315	652	12
156	2	\$21,992	10	1,060	0
157	211	\$10,000	10	300	115
158	24	\$21,992	40	750	0
159	14	\$21,992	85	1,300	0
160	159	\$31,977	100	451	37
161	277	\$21,756	98	118	23
162	179	\$21,756	62	446	0
163	365	\$31,653	380	2,106	0
164	505	\$9,703	0	303	92
165	238	\$7,462	14	496	114
166	184	\$9,142	0	625	775
167	282	\$23,147	100	503	0
168	490	\$32,330	120	1,200	2,273
169	349	\$30,764	0	301	75
170	252	\$20,250	146	3,000	216
171	438	\$15,461	237	190	0
172	1175	\$46,626	0	468	600
173	325	\$36,167	10	355	1,601
174	935	\$44,500	220	755	459
175	991	\$24,436	35	727	1,188
176	385	\$27,500	8	107	0
177	764	\$26,190	4	288	209
178	194	\$48,281	125	275	664
179	456	\$48,281	30	220	120
180	264	\$52,566	100	150	85

TAZ	2035 Households	Median Income	2035 Retail Employment	2035 Non-Retail Employment	2035 School/Daycare Enrollment
181	682	\$35,000	866	729	0
182	601	\$35,000	240	325	0
183	960	\$19,232	590	422	0
184	374	\$22,440	85	1,050	65
185	139	\$19,286	100	527	92
186	663	\$19,286	7	306	687
187	475	\$33,347	15	165	0
188	550	\$70,500	0	222	0
189	384	\$59,087	47	1,453	87
190	225	\$59,087	320	1,301	120
191	388	\$55,089	290	475	187
192	1350	\$53,839	1,600	1,716	839
193	0	\$0	260	863	98
194	0	\$0	95	1,150	0
195	601	\$42,763	290	1,300	571
196	1840	\$40,671	710	552	400
197	1460	\$42,987	14	859	4,776
198	595	\$65,296	5	241	190
199	1241	\$31,676	990	878	460
200	962	\$64,118	55	576	125
201	577	\$79,646	0	104	0
202	328	\$67,869	0	116	40
203	848	\$28,989	165	1,955	0
204	306	\$68,929	390	375	0
205	985	\$52,230	680	1,787	0
206	53	\$52,230	19	16	0
207	376	\$68,636	0	129	0
208	249	\$50,357	40	750	1,298
209	798	\$28,534	750	850	503
210	740	\$34,523	14	576	250
211	56	\$44,792	95	253	0
212	188	\$44,792	150	180	0
213	109	\$40,938	1,350	575	0
214	572	\$19,811	400	370	0
215	624	\$47,835	12	175	0
216	305	\$40,938	45	225	0
217	950	\$54,254	775	2,005	793
218	750	\$45,574	75	274	0
219	566	\$31,977	45	450	0
220	2078	\$32,340	101	7,881	24,847
221	102	\$35,521	3	130	0
222	680	\$34,087	22	336	0
223	300	\$32,917	30	1,713	300
224	120	\$33,224	25	127	104
225	27	\$33,224	80	850	0
226	568	\$31,667	36	475	553
227	249	\$41,500	484	1,250	0
228	863	\$35,439	3	1,259	1,803
229	437	\$26,071	112	182	0
230	82	\$34,550	0	4,485	0
231	47	\$34,550	347	60	0
232	190	\$34,550	15	139	0
233	135	\$42,467	0	66	0
234	18	\$42,467	0	20	0
235	262	\$77,929	56	419	267
236	2426	\$57,212	325	823	656
237	52	\$81,830	25	126	267
238	6200	\$81,830	200	817	3,343
239	3000	\$101,664	23	880	178
240	415	\$77,929	15	119	700

TAZ	2035 Households	Median Income	2035 Retail Employment	2035 Non-Retail Employment	2035 School/Daycare Enrollment
241	1500	\$44,286	50	470	250
242	200	\$47,083	0	91	0
243	70	\$45,406	5	89	0
244	140	\$48,875	40	1,008	0
245	160	\$10,813	300	556	0
246	155	\$62,260	700	1,805	720
247	925	\$45,500	82	2,963	0
248	125	\$45,500	83	1,703	0
249	1140	\$51,250	175	389	0
250	4500	\$34,783	200	1,109	0
251	225	\$48,500	3	115	0
252	83	\$67,847	37	72	0
253	175	\$67,847	0	80	0
254	350	\$111,989	40	181	0
255	625	\$67,869	400	575	0
256	960	\$90,926	40	1,276	0
257	350	\$70,290	49	439	0
258	4515	\$70,290	900	2,097	705
259	3071	\$56,250	325	6,650	360
260	56	\$56,250	25	330	6,479
261	450	\$25,163	750	640	0
262	310	\$45,574	256	296	73
263	4	\$25,163	141	378	753
264	0	\$0	3	125	753
265	825	\$28,750	0	341	600
266	127	\$28,750	8	45	0
267	442	\$26,518	5	425	225
268	725	\$23,321	19	306	29
269	500	\$27,563	5	200	1475
270	348	\$37,656	15	335	0
271	63	\$37,656	100	470	932
272	60	\$37,656	65	400	0
273	474	\$32,043	25	400	728
274	239	\$32,043	0	10	0
275	503	\$32,043	100	500	0
276	1000	\$39,926	252	1500	1864
277	219	\$45,682	0	0	0
278	256	\$45,682	0	0	0
279	211	\$26,098	20	300	190
280	90	\$26,098	0	135	0
281	1025	\$50,357	30	200	0
282	217	\$31,548	100	250	71
283	135	\$34,548	409	750	0
284	24	\$34,548	18	87	0
285	370	\$55,500	50	120	0
286	1130	\$48,346	191	400	75
287	287	\$28,333	100	450	160
288	788	\$52,031	35	230	50
289	530	\$64,706	500	600	1726
290	427	\$64,706	250	250	0
291	2500	\$57,976	200	750	107
292	1789	\$64,706	270	1600	0
293	1453	\$64,706	1,000	1000	296
294	1055	\$57,109	100	350	105
295	172	\$57,109	20	50	62
296	100	\$57,109	0	40	0
297	180	\$25,240	100	100	0
298	249	\$25,240	67	1000	0
299	24	\$42,093	8	300	0
300	579	\$42,093	0	1244	0

TAZ	2035 Households	Median Income	2035 Retail Employment	2035 Non-Retail Employment	2035 School/Daycare Enrollment
301	1420	\$42,093	22	230	0
302	657	\$42,404	0	120	0
303	423	\$42,404	44	171	0
304	500	\$42,404	5	84	0
305	1119	\$57,976	10	300	2388
306	512	\$57,976	11	144	0
307	35	\$42,404	3	90	0
308	650	\$40,571	358	249	0
309	1,850	\$37,717	1,424	560	50
310	1,200	\$37,717	270	360	481
311	450	\$31,731	67	1,018	1,800
312	145	\$37,500	13	187	58
313	800	\$45,093	70	811	1,600
314	341	\$37,500	3	518	1,950
315	216	\$28,125	16	321	337
316	2,100	\$49,738	20	20	800
317	650	\$52,143	28	550	0
318	371	\$38,631	36	473	124
319	624	\$45,938	289	762	0
320	300	\$40,905	0	87	0
321	944	\$40,905	58	918	20
322	700	\$37,031	129	1,731	20
323	1,000	\$37,031	46	343	0
324	1,250	\$53,917	20	263	40
325	2,910	\$62,019	10	516	2,100
326	1,250	\$62,019	7	453	40
327	371	\$67,500	20	250	0
328	750	\$67,500	733	704	0
329	575	\$40,938	219	514	0
330	66	\$40,938	390	1,581	0
331	6	\$53,917	3	227	0
332	78	\$62,019	18	128	0
333	65	\$25,273	0	638	2,700
334	251	\$27,083	4	324	118
335	318	\$25,273	7	485	65
336	330	\$35,884	76	216	0
337	450	\$35,884	18	784	1,500
338	700	\$41,607	43	608	0
339	825	\$28,571	57	1,291	0
340	156	\$28,571	18	106	39
341	250	\$26,970	15	1,900	732
342	300	\$35,884	4	153	0
343	70	\$34,850	5	52	0
344	500	\$52,279	5	213	0
345	761	\$37,361	18	271	0
346	900	\$51,818	90	417	90
347	1462	\$39,375	7	185	2363
348	554	\$47,875	0	131	0
349	443	\$47,000	10	245	0
350	160	\$21,360	1	50	0
351	450	\$30,486	0	21	0
352	1,000	\$38,214	1,302	670	0
353	0	\$0	200	40	0
354	1,000	\$38,214	1,186	500	589
355	674	\$49,738	12	133	0
356	1,775	\$40,571	1,000	696	150
357	131	\$42,093	7	86	212
358	963	\$36,250	52	215	0
359	1,030	\$52,143	43	275	0
360	928	\$47,000	15	155	0



<b>TAZ</b>	<b>2035 Households</b>	<b>Median Income</b>	<b>2035 Retail Employment</b>	<b>2035 Non-Retail Employment</b>	<b>2035 School/Daycare Enrollment</b>
361	13	\$57,976	0	8	0
362	392	\$37,717	20	120	0
363	269	\$49,738	10	10	0
364	400	\$51,932	0	150	0
365	600	\$53,917	127	521	0
366	1,100	\$37,700	10	1,256	2,550
367	100	\$45,406	175	2,507	0
368	300	\$46,406	8	236	481
369	60	\$47,083	0	23	0
370	120	\$47,083	0	57	0
371	320	\$42,467	4	182	98
372	825	\$57,212	21	175	0
373	105	\$48,500	45	110	0
374	90	\$48,500	11	35	0
375	3400	\$81,830	395	1,185	0
376	230	\$34,550	48	195	6
377	35	\$34,550	27	18	0
378	125	\$67,847	0	58	0
379	145	\$67,847	7	74	0
380	22	\$67,847	0	12	0
381	350	\$67,847	50	173	0
382	1250	\$51,250	60	274	0
383	200	\$44,286	60	747	0
384	90	\$44,286	0	26	0
385	648	\$33,347	225	825	193
386	1375	\$90,926	4,435	3,507	770
387	1250	\$58,359	25	422	0