

Montgomery Metropolitan Planning Organization (MPO)

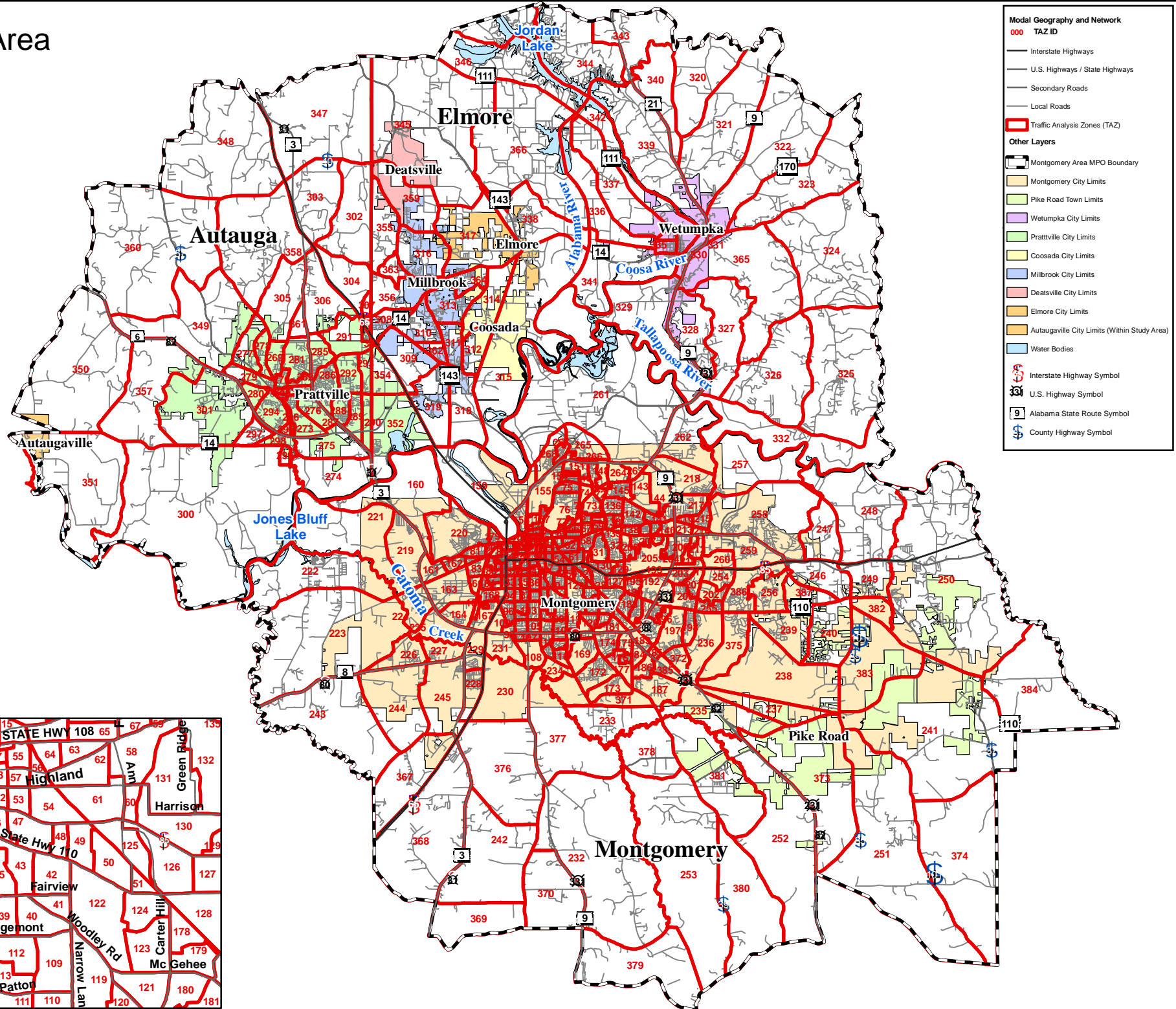
Long Range Transportation Plan

Base Year 2005 Socioeconomic Data

April 2009

Prepared by MPO Staff

# Study Area

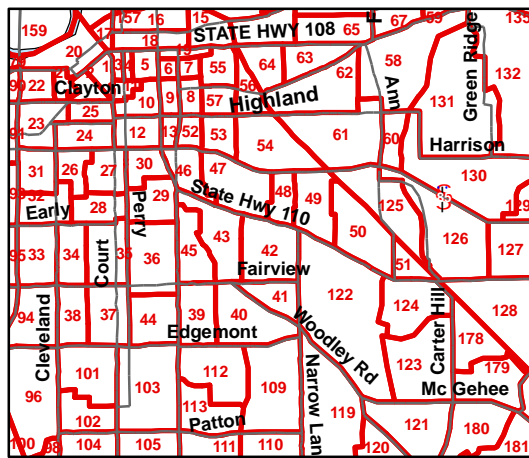


**Modal Geography and Network**

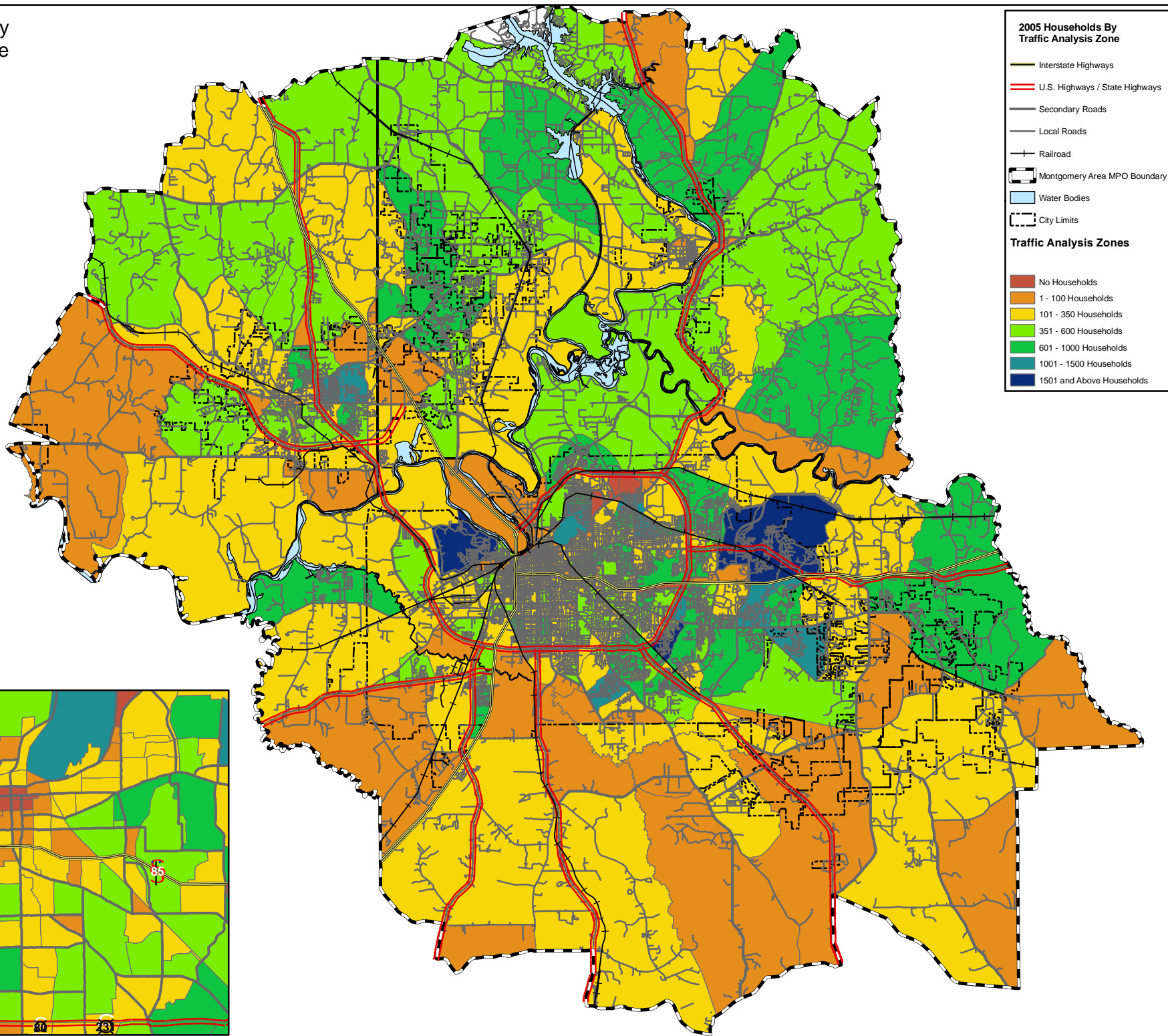
- 000 TAZ ID
- Interstate Highways
- U.S. Highways / State Highways
- Secondary Roads
- Local Roads
- Traffic Analysis Zones (TAZ)

**Other Layers**

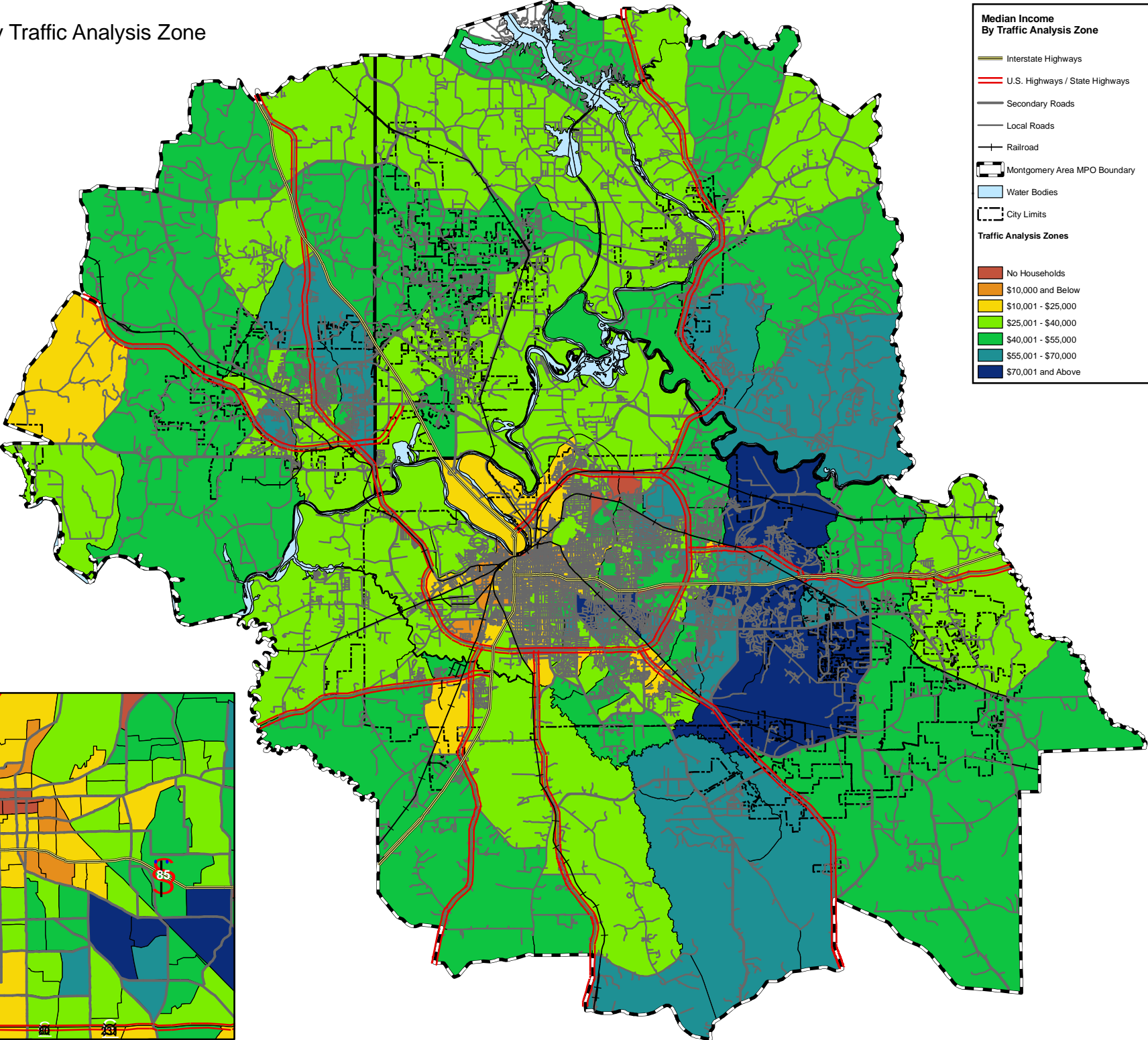
- Montgomery Area MPO Boundary
- Montgomery City Limits
- Pike Road Town Limits
- Wetumpka City Limits
- Prattville City Limits
- Coosada City Limits
- Millbrook City Limits
- Deatsville City Limits
- Elmore City Limits
- Autaugaville City Limits (Within Study Area)
- Water Bodies
- Interstate Highway Symbol
- U.S. Highway Symbol
- Alabama State Route Symbol
- County Highway Symbol



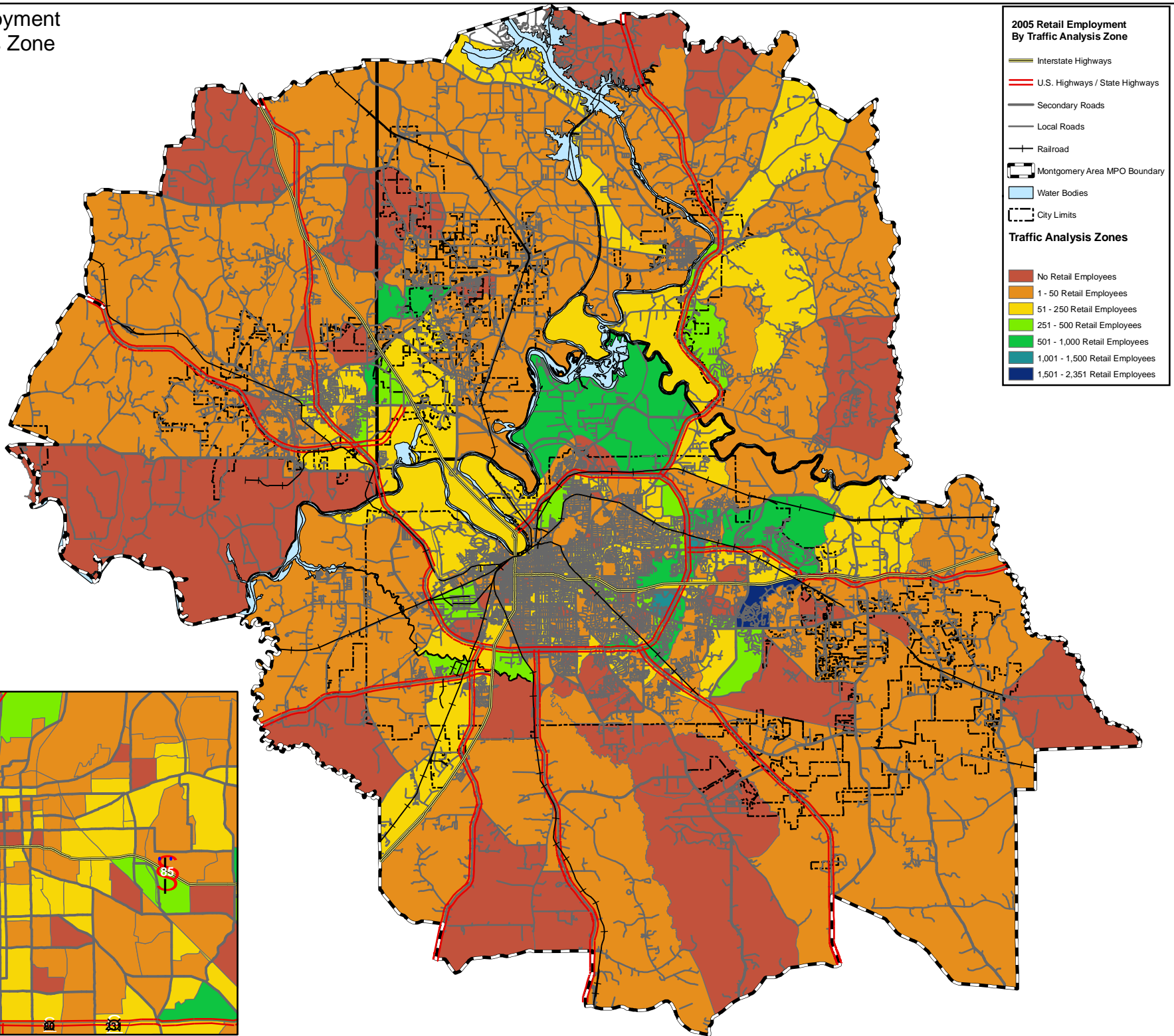
# 2005 Households By Traffic Analysis Zone



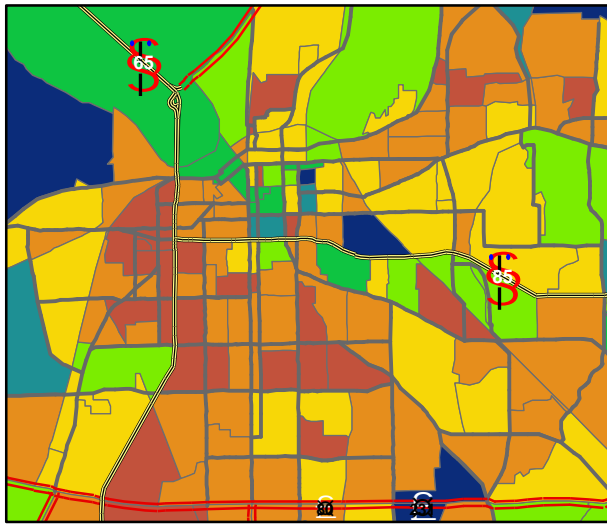
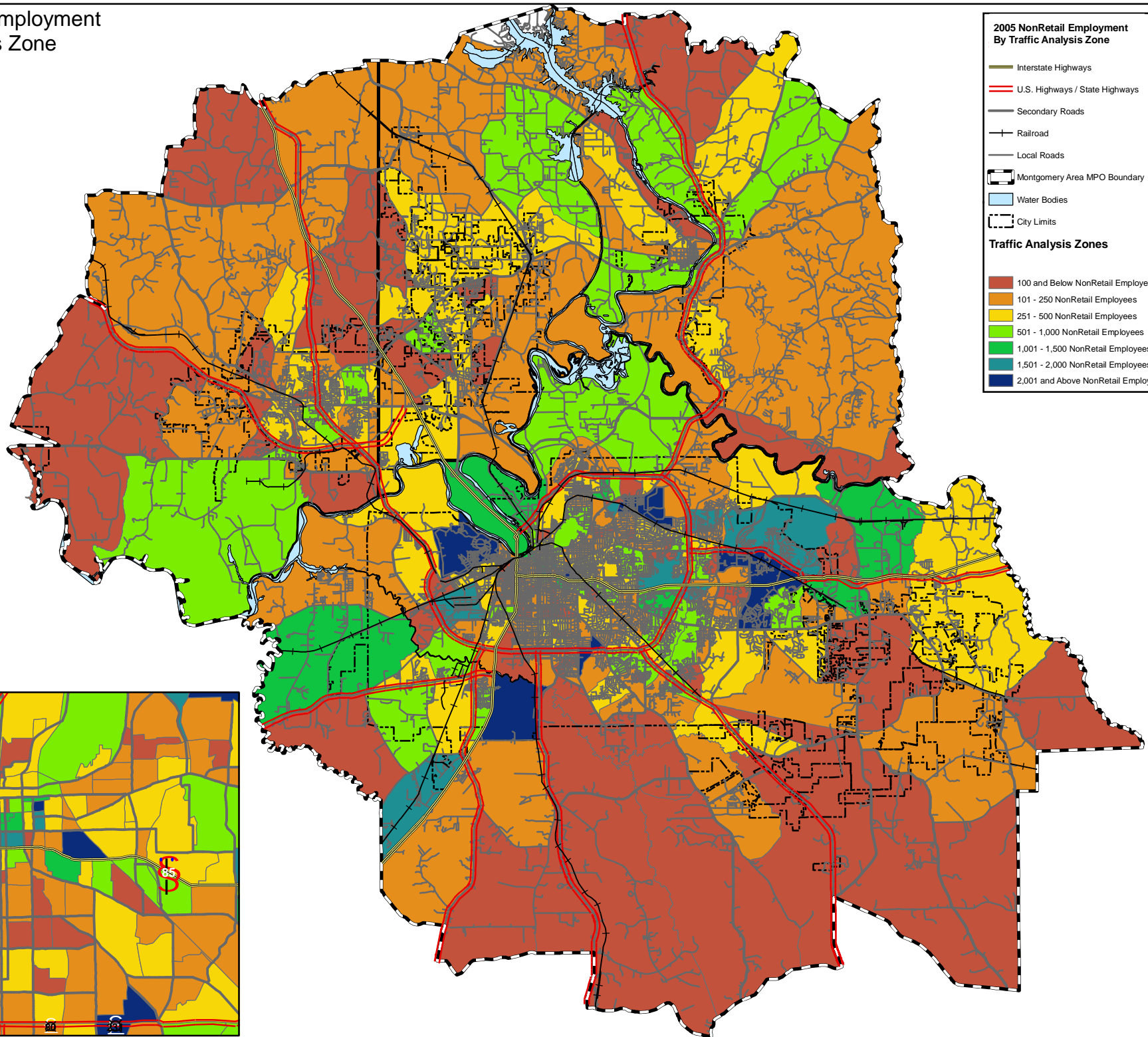
# Median Income By Traffic Analysis Zone



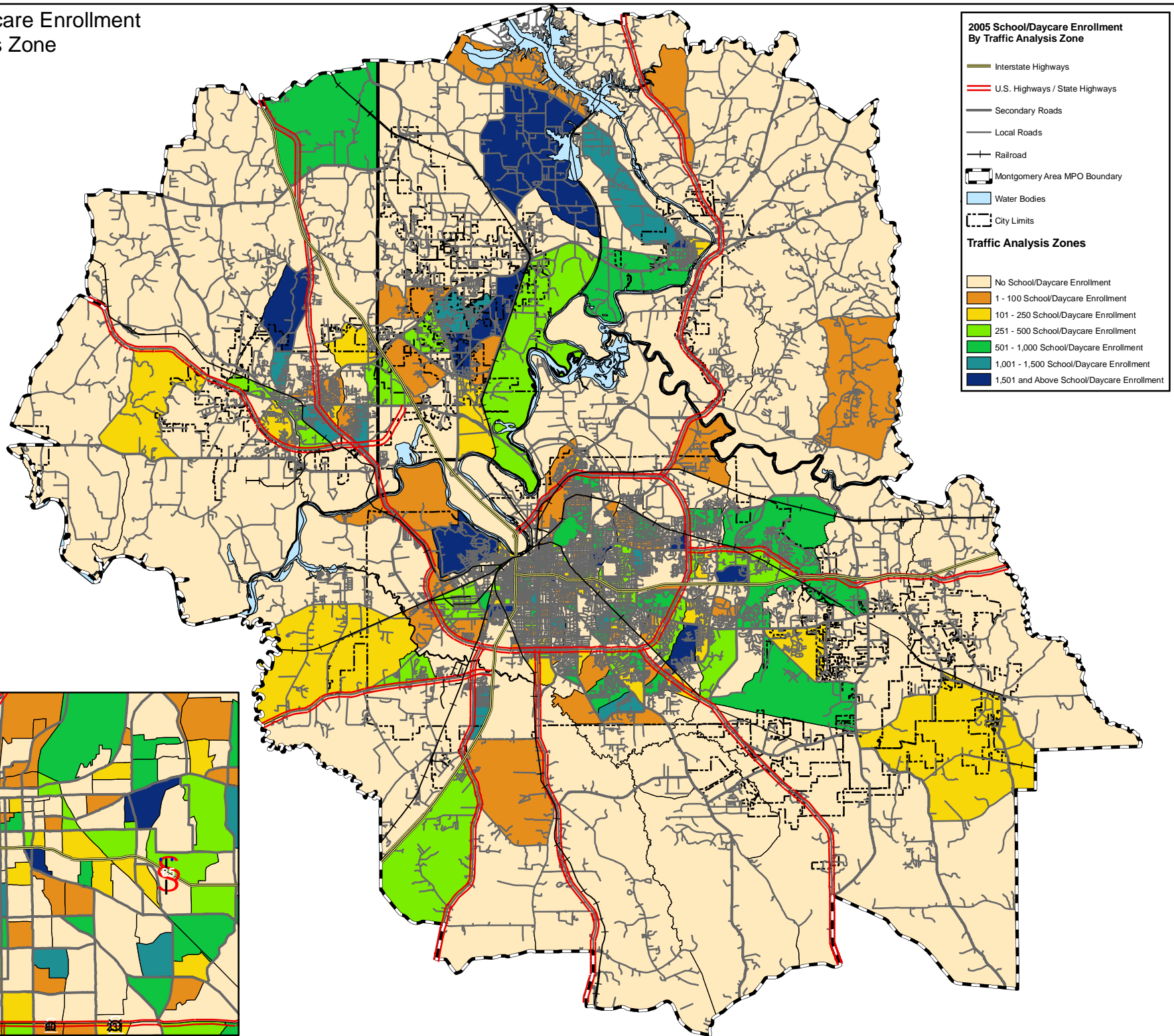
# 2005 Retail Employment By Traffic Analysis Zone



# 2005 NonRetail Employment By Traffic Analysis Zone



# 2005 School/Daycare Enrollment By Traffic Analysis Zone



TAZ	2005 Households	Median Income	2005 Retail Employment	2005 Non-Retail Employment	2005 School/Daycare Enrollment
1	0	\$0	42	1,211	4,257
2	176	\$11,611	27	129	440
3	0	\$0	53	344	0
4	0	\$0	30	74	0
5	0	\$0	52	985	185
6	0	\$0	0	517	0
7	0	\$0	1	2,802	0
8	2	\$18,162	57	1,543	0
9	43	\$18,162	28	457	0
10	44	\$18,162	23	1,469	589
11	1	\$11,611	0	1,025	92
12	132	\$18,162	0	1,574	0
13	14	\$17,716	137	46	499
14	234	\$24,602	8	101	0
15	9	\$11,611	2	884	259
16	282	\$11,611	15	312	37
17	41	\$11,611	71	114	0
18	0	\$0	205	446	0
19	0	\$0	8	1,098	0
20	0	\$0	168	1,456	0
21	24	\$11,611	23	231	0
22	55	\$11,611	22	150	0
23	172	\$11,033	20	156	0
24	144	\$16,944	22	191	0
25	129	\$16,944	18	193	29
26	108	\$15,476	0	123	594
27	121	\$15,476	33	272	0
28	181	\$22,768	3	91	0
29	263	\$21,857	17	247	120
30	32	\$21,857	84	508	0
31	204	\$9,750	22	58	0
32	252	\$13,462	5	106	600
33	298	\$14,191	70	86	25
34	253	\$17,500	39	143	84
35	179	\$34,032	87	177	1,009
36	403	\$34,032	80	103	0
37	185	\$34,671	62	191	815
38	151	\$34,671	48	48	0
39	302	\$51,583	38	75	0
40	304	\$53,250	0	88	0
41	34	\$53,250	93	206	790
42	451	\$46,350	235	172	28
43	289	\$35,446	70	184	65
44	258	\$34,671	4	88	30
45	275	\$51,583	106	87	0
46	234	\$9,453	11	150	5,469
47	117	\$7,619	4	1,151	0
48	58	\$22,667	126	314	847
49	210	\$22,667	99	568	135
50	380	\$38,819	0	93	0
51	91	\$38,819	12	36	0
52	82	\$17,716	0	134	105
53	250	\$17,716	9	226	0
54	50	\$17,716	70	2,276	170
55	53	\$8,691	29	270	0
56	218	\$8,691	26	169	277
57	283	\$8,691	36	369	38
58	856	\$24,716	138	290	1,503
59	290	\$31,589	115	352	0



TAZ	2005 Households	Median Income	2005 Retail Employment	2005 Non-Retail Employment	2005 School/Daycare Enrollment
60	55	\$31,396	10	170	0
61	541	\$31,396	68	368	484
62	480	\$33,060	179	357	0
63	274	\$24,602	137	104	100
64	243	\$24,602	39	315	0
65	336	\$38,563	73	104	0
66	302	\$31,019	10	179	166
67	297	\$31,589	0	186	827
68	133	\$43,875	125	106	0
69	61	\$43,875	0	142	0
70	54	\$43,875	4	27	83
71	0	\$0	0	0	0
72	138	\$47,500	14	1,954	52
73	327	\$47,500	17	130	0
74	0	\$0	44	187	0
75	617	\$27,713	18	222	48
76	1,187	\$30,413	37	881	556
77	216	\$14,541	22	321	0
78	204	\$43,875	4	98	541
79	535	\$8,796	3	147	192
80	90	\$8,796	78	161	382
81	68	\$8,796	155	460	0
82	172	\$9,142	107	118	0
83	427	\$9,142	26	258	0
84	131	\$4,821	10	246	131
85	315	\$14,464	0	87	0
86	270	\$20,956	7	133	481
87	195	\$19,313	0	49	0
88	100	\$19,313	0	28	0
89	69	\$11,639	0	96	0
90	26	\$11,639	13	24	0
91	80	\$11,639	5	64	124
92	10	\$19,313	0	65	0
93	147	\$11,639	0	97	964
94	262	\$24,583	27	88	0
95	219	\$9,388	62	99	0
96	746	\$19,214	0	163	0
97	140	\$9,388	0	223	260
98	186	\$29,122	16	176	56
99	15	\$29,122	0	6	0
100	117	\$29,122	34	73	0
101	284	\$48,816	1	114	455
102	291	\$24,213	18	140	94
103	779	\$19,639	121	337	0
104	503	\$23,690	0	118	0
105	495	\$23,512	90	234	150
106	283	\$20,952	22	114	140
107	75	\$20,952	41	190	473
108	112	\$20,952	19	174	116
109	357	\$55,078	1	110	0
110	375	\$33,237	43	214	0
111	245	\$33,237	132	308	0
112	315	\$25,500	5	277	1,108
113	245	\$25,500	0	86	52
114	265	\$36,477	0	65	0
115	223	\$31,901	35	195	37
116	458	\$36,250	5	193	590
117	161	\$36,477	6	467	85
118	261	\$31,901	3	70	0

TAZ	2005 Households	Median Income	2005 Retail Employment	2005 Non-Retail Employment	2005 School/Daycare Enrollment
119	374	\$36,750	12	219	0
120	183	\$36,750	178	2,639	0
121	241	\$61,176	50	227	628
122	451	\$101,369	30	255	0
123	354	\$61,176	48	306	1,436
124	299	\$91,671	45	104	0
125	247	\$40,714	377	555	134
126	529	\$52,566	371	889	0
127	255	\$89,206	0	104	279
128	464	\$84,878	10	193	571
129	257	\$28,056	48	315	0
130	572	\$45,089	9	297	389
131	580	\$41,981	7	272	0
132	877	\$30,377	155	581	268
133	383	\$31,979	19	101	104
134	196	\$35,893	2	46	0
135	129	\$35,893	60	135	64
136	725	\$53,041	8	163	59
137	263	\$48,864	51	227	90
138	226	\$48,864	209	189	21
139	234	\$36,845	5	57	0
140	227	\$36,845	363	645	2,831
141	980	\$37,536	128	369	0
142	1,154	\$57,146	7	316	669
143	152	\$55,556	200	5,958	0
144	161	\$55,556	324	221	0
145	193	\$50,860	5	4,293	0
146	0	\$0	0	78	0
147	0	\$0	3	8	0
148	0	\$0	38	626	0
149	184	\$35,592	58	1,159	0
150	0	\$0	0	4	0
151	295	\$35,592	125	305	893
152	0	\$0	0	1,460	0
153	225	\$35,592	10	82	0
154	352	\$27,344	8	139	24
155	510	\$21,992	287	445	12
156	2	\$21,992	7	60	0
157	211	\$10,000	10	259	100
158	24	\$21,992	35	690	0
159	14	\$21,992	79	1,110	0
160	150	\$31,977	90	378	32
161	276	\$21,756	72	80	20
162	176	\$21,756	45	304	0
163	335	\$31,653	338	1,805	375
164	492	\$9,703	0	163	80
165	221	\$7,462	10	323	99
166	184	\$9,142	0	481	602
167	269	\$23,147	89	437	0
168	490	\$32,330	106	936	2,117
169	345	\$30,764	0	205	65
170	252	\$20,250	107	2,630	201
171	438	\$15,461	235	190	0
172	1,103	\$46,626	0	317	535
173	257	\$36,167	0	217	1,284
174	912	\$44,500	205	616	398
175	983	\$24,436	35	652	937
176	374	\$27,500	6	89	0
177	764	\$26,190	3	197	181

TAZ	2005 Households	Median Income	2005 Retail Employment	2005 Non-Retail Employment	2005 School/Daycare Enrollment
178	194	\$48,281	115	233	664
179	456	\$48,281	29	201	120
180	264	\$52,566	93	127	85
181	681	\$35,000	633	497	0
182	601	\$35,000	208	290	0
183	726	\$19,232	504	286	0
184	374	\$22,440	71	826	56
185	130	\$19,286	78	445	80
186	633	\$19,286	5	248	687
187	372	\$33,347	11	103	0
188	467	\$70,500	0	140	0
189	337	\$59,087	34	985	87
190	204	\$59,087	273	963	120
191	388	\$55,089	262	377	167
192	540	\$53,839	1,384	1,081	799
193	0	\$0	213	589	85
194	0	\$0	81	932	0
195	601	\$42,763	254	1,127	530
196	1,831	\$40,671	660	546	385
197	664	\$42,987	10	584	4,399
198	589	\$65,296	4	205	165
199	1,225	\$31,676	914	737	363
200	956	\$64,118	45	524	125
201	558	\$79,646	0	137	0
202	325	\$67,869	0	101	40
203	822	\$28,989	144	1,679	0
204	306	\$68,929	351	297	0
205	801	\$52,230	604	1,580	0
206	53	\$52,230	19	16	0
207	372	\$68,636	0	87	0
208	249	\$50,357	29	816	1,298
209	798	\$28,534	712	816	391
210	726	\$34,523	10	520	250
211	42	\$44,792	81	232	0
212	187	\$44,792	140	84	0
213	109	\$40,938	1,244	500	0
214	466	\$19,811	332	294	0
215	624	\$47,835	12	145	0
216	305	\$40,938	39	190	0
217	882	\$54,254	759	1,866	757
218	631	\$45,574	45	185	0
219	564	\$31,977	45	367	0
220	542	\$32,340	74	7,908	24,847
221	101	\$35,521	2	113	0
222	620	\$34,087	16	221	0
223	233	\$32,917	22	1,179	172
224	110	\$33,224	22	95	90
225	26	\$33,224	70	737	0
226	567	\$31,667	26	284	371
227	249	\$41,500	354	760	0
228	862	\$35,439	2	859	1,171
229	437	\$26,071	82	124	0
230	82	\$34,550	0	3,061	0
231	47	\$34,550	254	25	0
232	148	\$34,550	11	89	0
233	120	\$42,467	0	43	0
234	18	\$42,467	0	14	0
235	256	\$77,929	41	286	0
236	953	\$57,212	189	376	371

TAZ	2005 Households	Median Income	2005 Retail Employment	2005 Non-Retail Employment	2005 School/Daycare Enrollment
237	52	\$81,830	18	51	0
238	439	\$81,830	0	204	643
239	1,243	\$101,664	17	361	171
240	226	\$77,929	11	55	0
241	231	\$44,286	3	166	250
242	154	\$47,083	0	56	0
243	54	\$45,406	0	41	0
244	98	\$48,875	20	642	0
245	132	\$10,813	187	397	0
246	144	\$62,260	4	1,269	720
247	111	\$45,500	60	39	0
248	109	\$45,500	61	1,478	0
249	629	\$51,250	19	196	0
250	680	\$34,783	42	265	0
251	165	\$48,500	2	70	0
252	83	\$67,847	27	49	0
253	99	\$67,847	0	50	0
254	281	\$111,989	5	73	0
255	625	\$67,869	337	473	0
256	828	\$90,926	20	690	0
257	308	\$70,290	36	294	0
258	2,588	\$70,290	772	1,510	690
259	1,876	\$56,250	208	4,406	360
260	32	\$56,250	0	189	5,191
261	374	\$25,163	609	560	0
262	277	\$45,574	187	197	63
263	4	\$25,163	103	258	0
264	0	\$0	2	52	0
265	618	\$28,750	0	184	0
266	127	\$28,750	6	30	0
267	440	\$26,518	4	401	223
268	674	\$23,321	14	209	25
269	314	\$27,563	22	168	1,192
270	313	\$37,656	10	332	0
271	43	\$37,656	76	370	649
272	41	\$37,656	47	337	0
273	432	\$32,043	18	348	445
274	6	\$32,043	0	4	0
275	318	\$32,043	76	190	0
276	451	\$39,926	184	622	1,298
277	192	\$45,682	10	39	0
278	251	\$45,682	1	57	0
279	211	\$26,098	14	224	275
280	48	\$26,098	0	82	0
281	886	\$50,357	5	271	0
282	217	\$31,548	51	75	71
283	126	\$34,548	319	453	0
284	24	\$34,548	13	53	0
285	355	\$55,500	45	116	0
286	1,130	\$48,346	191	365	75
287	286	\$28,333	89	336	160
288	764	\$52,031	24	218	50
289	512	\$64,706	334	352	1,160
290	156	\$64,706	127	127	0
291	58	\$57,976	0	37	107
292	1,020	\$64,706	195	841	0
293	331	\$64,706	985	406	296
294	488	\$57,109	16	351	205
295	142	\$57,109	20	48	62

TAZ	2005 Households	Median Income	2005 Retail Employment	2005 Non-Retail Employment	2005 School/Daycare Enrollment
296	97	\$57,109	0	29	0
297	135	\$25,240	5	49	0
298	244	\$25,240	49	502	0
299	24	\$42,093	8	180	0
300	217	\$42,093	0	756	0
301	490	\$42,093	16	139	0
302	302	\$42,404	0	71	0
303	330	\$42,404	32	104	0
304	131	\$42,404	2	51	0
305	414	\$57,976	4	280	2,105
306	372	\$57,976	8	87	0
307	34	\$42,404	2	88	0
308	178	\$40,571	22	97	0
309	91	\$37,717	99	82	50
310	669	\$37,717	98	571	481
311	415	\$31,731	45	482	1,545
312	132	\$37,500	9	88	58
313	740	\$45,093	47	384	1,039
314	302	\$37,500	2	245	1,706
315	216	\$28,125	11	152	337
316	927	\$49,738	15	364	0
317	473	\$52,143	19	261	0
318	320	\$38,631	24	224	124
319	354	\$45,938	193	361	0
320	155	\$40,905	0	41	0
321	614	\$40,905	39	435	0
322	367	\$37,031	86	819	0
323	501	\$37,031	31	162	0
324	372	\$53,917	16	124	0
325	736	\$62,019	0	244	100
326	653	\$62,019	5	215	0
327	268	\$67,500	7	103	0
328	436	\$67,500	489	333	0
329	473	\$40,938	146	244	0
330	62	\$40,938	260	748	0
331	13	\$53,917	2	108	0
332	78	\$62,019	12	61	0
333	61	\$25,273	0	302	1,782
334	242	\$27,083	3	153	118
335	318	\$25,273	5	230	675
336	261	\$35,884	51	102	0
337	391	\$35,884	12	371	1,084
338	534	\$41,607	29	288	0
339	624	\$28,571	38	611	0
340	100	\$28,571	12	50	39
341	183	\$26,970	10	917	732
342	143	\$35,884	3	73	0
343	62	\$34,850	0	24	0
344	394	\$52,279	0	101	0
345	406	\$37,361	12	128	0
346	533	\$51,818	60	198	50
347	387	\$39,375	5	112	996
348	304	\$47,875	0	80	0
349	268	\$47,000	6	147	0
350	75	\$21,360	1	28	0
351	25	\$30,486	0	13	0
352	260	\$38,214	139	326	0
353	0	\$0	184	20	0
354	86	\$38,214	488	217	365

<b>TAZ</b>	<b>2005 Households</b>	<b>Median Income</b>	<b>2005 Retail Employment</b>	<b>2005 Non-Retail Employment</b>	<b>2005 School/Daycare Enrollment</b>
355	290	\$49,738	0	62	0
356	818	\$40,571	611	429	95
357	86	\$42,093	5	52	212
358	538	\$36,250	38	131	0
359	630	\$52,143	0	284	0
360	558	\$47,000	15	155	0
361	13	\$57,976	0	5	0
362	166	\$37,717	10	89	0
363	165	\$49,738	1	43	0
364	355	\$51,932	0	71	0
365	458	\$53,917	85	247	0
366	794	\$37,700	7	595	1,535
367	73	\$45,406	73	1,709	0
368	281	\$46,406	6	158	470
369	51	\$47,083	0	14	0
370	102	\$47,083	0	36	0
371	53	\$42,467	3	88	86
372	282	\$57,212	15	81	0
373	89	\$48,500	5	73	0
374	52	\$48,500	8	18	0
375	626	\$81,830	289	436	0
376	199	\$34,550	35	129	5
377	22	\$34,550	20	11	0
378	94	\$67,847	0	36	0
379	124	\$67,847	5	48	0
380	22	\$67,847	0	8	0
381	228	\$67,847	0	108	0
382	6	\$51,250	0	6	0
383	66	\$44,286	9	28	0
384	51	\$44,286	0	12	0
385	648	\$33,347	148	528	193
386	1,210	\$90,926	2,351	2,375	749
387	110	\$58,359	0	109	0