

**FINAL**  
**MONTGOMERY METROPOLITAN PLANNING  
ORGANIZATION**

**FISCAL YEAR 2010 REBALANCED/UPDATED  
TRANSPORTATION  
IMPROVEMENT PROGRAM  
FISCAL YEARS 2008-2011**



**I-65 North and South Construction Improvements – Montgomery, Alabama**

**Prepared by the MPO Transportation Planning Staff  
in cooperation with the Alabama Department of Transportation, Federal Transit  
Administration, and Federal Highway Administration.**

**Approval Date: January 5, 2010**

**FINAL**  
**MONTGOMERY METROPOLITAN PLANNING  
ORGANIZATION**

**FISCAL YEAR 2010 REBALANCED/UPDATED  
TRANSPORTATION IMPROVEMENT PROGRAM  
FISCAL YEARS 2008-2011**

This document is posted at <http://www.montgomerympo.org>

For information regarding this document, please contact:  
**Mr. Robert E. Smith Jr., Senior Transportation Planner/Administrator (MPO Staff)**  
**The City of Montgomery, Planning and Development Department**  
**Transportation Planning Division**  
**Intermodal Transportation Facility**  
**495 Molton Street**  
**Montgomery, AL 36104**  
**Phone: (334) 241-2249 · Fax: (334) 241-2326**  
**Email: [rsmith@montgomeryal.gov](mailto:rsmith@montgomeryal.gov)**  
**MPO Website Address: <http://www.montgomerympo.org>**

This work program was financed in part by the U.S. Department of Transportation, Federal Highway Administration, Federal Transit Administration, Alabama Department of Transportation and the City of Montgomery and produced by the City of Montgomery-Transportation Planning Division (MPO Staff), in fulfillment of requirements set forth in Title 23 USC 134 and as amended by Public Law 109-59 SAFETEA-LU 2005. The contents of this report do not reflect the official views or policy of the U.S. Department of Transportation.

# **Montgomery Metropolitan Planning Organization Policy Board Membership**

## **Voting MPO Members**

Mayor Jim Byard, **MPO Chairman**  
City of Prattville

Mayor Todd Strange  
City of Montgomery

Mr. Charles Jinright, **MPO Vice Chairman**  
City Councilman  
City of Montgomery

Mayor Jon Chapman  
Town of Coosada

Mayor Al Kelley  
City of Millbrook

Mayor Jerry Willis  
City of Wetumpka

Mr. Cornelius Calhoun  
City Councilman  
City of Montgomery

Mr. Ken Groves, Director, **MPO Secretary**  
Planning & Development  
City of Montgomery

Mr. Elton Dean  
Montgomery County Commission

Mr. John Lorentson  
Sixth Division Engineer – ALDOT

Mr. Danny Chavers  
Autauga County Commission

Mr. Earl Reeves  
Elmore County Commission

## **Non-Voting MPO Members**

Mr. Kelvin Miller  
General Manager  
Montgomery Area Transit System

Mr. Bill Tucker, Executive Director  
Central AL Regional Planning &  
Development Commission

Mr. Robert J. Jilla  
Bureau Chief  
Transportation Planning/Modal  
Programs ALDOT

Ms. Marilyn DeFee, Director  
Autauga County Rural Transportation

Mr. Mark D. Bartlett  
Division Administrator  
Federal Highway Administration

Mr. Ken Upchurch  
City of Montgomery Planning Commission

## **MPO TRANSPORTATION PLANNING STAFF**

Mr. Robert E. Smith Jr., Senior Transportation Planner/Administrator

Mr. Kindell C. Anderson, Transportation Planner

Ms. April Delchamps, Transportation Planner

Mr. James Askew, GIS Analyst

Mr. Joe C. Mack Jr., Grants Accountant

## Montgomery Metropolitan Planning Organization (MPO) Technical Coordinating Committee (TCC) Membership

### TCC-Voting Members

Ms. Alfredo Acoff, Coordinator  
Environmental Technical Section ALDOT

Ms. Terri Adams  
ADECA

Mr. Locke (Bubba) Bowden  
Traffic Engineer  
City of Montgomery

Mr. Chris Conway  
City Engineer  
City of Montgomery

Mr. David Bufkin  
County Engineer  
Autauga County

Ms. Rita Murkinson  
Town Clerk  
Town of Elmore

Mr. John Morris (Chris Christensen)  
Montgomery Association for Retarded Citizens

Mr. Joel Duke, City Planner  
City of Prattville

Mr. Robert E. Smith Jr.  
Senior Transportation Planner, Division Head  
City of Montgomery/MPO Staff , **Assistant TCC Chairman**

Mayor W. Clayton Edgar  
Town of Deatsville

Mr. David Harris  
Planning Programs and Right of Way Manager  
Federal Highway Administration

Mr. Jerry Peters  
City Engineer  
City of Millbrook

Mr. Chris Howard  
ADEM  
Air Division Planning Branch

Clint Andrews  
Planning Engineer  
Federal Highway Administration

Mr. Ken Groves, Director  
City Planning & Development  
City of Montgomery, **TCC Chairman**

Mr. Stuart Peters  
Town of Coosada

Mr. Stuart Manson  
Assistant Traffic Engineer  
City of Montgomery

Mr. Richie Beyer  
County Engineer  
Elmore County

Mr. Neil Lowery  
Burnham Van Service

Emmanuel Oranika, Ph.D.  
Transportation Planning/Modal  
Programs-ALDOT

Mayor Gordon Stone  
Town of Pike Road

**TCC cont'd**

Mr. Kelvin Miller  
General Manager  
Montgomery Area Transit System

Mr. Bill Tucker, Executive Director  
Central AL Regional Planning &  
Development Commission

Mr. Tommy Tyson  
Land Use Controls Administrator  
City of Montgomery

Mr. George Speake  
County Engineer  
Montgomery County

Mr. David Bollie  
County Transportation Engineer  
ALDOT Sixth Division

Ms. Marilyn Defee, Director  
Autauga County Rural Transportation

Mr. Kleob Loflin, Planner  
City of Wetumpka

Mr. Frank Filgo, President  
Alabama Trucking Association

Mr. Patrick Dunson  
Assistant City Engineer  
City of Montgomery

**Non-Voting TCC Members**

Mr. Wes Elrod  
Assistant Bureau Chief  
Transportation Planning/Modal Programs  
-ALDOT

Mr. William E. (Bill) Couch  
Assistant Bureau Chief  
Transportation Planning/Modal  
Programs-ALDOT

Mr. Phil Perry  
Executive Director  
Montgomery Airport Authority

## **Montgomery Metropolitan Planning Organization (MPO) Citizens Advisory Committee (CAC) Membership**

Mr. David Sikes, **CAC Chairman**  
Elmore County

Mr. James Brown  
City of Montgomery

Ms. Valeria Harman  
City of Montgomery

Ms. Patricia Jackson  
Elmore County

Ms. Ruth Ott  
City of Montgomery

Mr. Jon Broadway  
City of Montgomery

Ms. Gracie Stroud  
City of Montgomery

Mr. Theodore White  
City of Montgomery

Ms. Mary Stevens  
City of Montgomery

Mr. Robert Britton  
City of Montgomery

Rodger Burnette  
Montgomery County

Mr. Johnny Jackson  
City of Montgomery

Mr. David Martin  
City of Montgomery

Mr. Blair Rehnberg  
Town of Coosada

Mr. Edward Stevens  
City of Montgomery

Ms. Kathy LeCroix  
City of Millbrook

Mr. Augustus Townes, Jr.  
City of Montgomery

**Montgomery MPO Resolution**  
**Montgomery Metropolitan Planning Organization (MPO)**  
**of the Montgomery Transportation Study Area**  
**Adopting the ~~Final~~ FY-2010 Rebalanced/Updated FY 2008 – 2011**  
**Transportation Improvement Program (TIP)**


**WHEREAS**, the **Montgomery Metropolitan Planning Organization (MPO)** is the organization designated by the Governor of the State of Alabama as being responsible, together with the State of Alabama, for implementing the applicable provisions of 23 USC 134, 135; 23 USC 324; 42 USC 7401 et seq.; 49 USC 5303, 5304; SAFETEA-LU (Public Law 109-59, August 2005), et al.; 23 CFR Parts 450; 40 CFR Parts 51 and 93; 49 CFR Parts 26, and 613; and,

**WHEREAS**, the U. S. Department of Transportation requires that transportation projects in the urbanized area and study area be included in a Transportation Improvement Program and adopted by vote of the Montgomery Metropolitan Planning Organization (MPO); and

**WHEREAS**, consistent with the declaration of these provisions, the Montgomery Metropolitan Planning Organization (MPO) Planning Staff, in cooperation with the Alabama Department of Transportation, has prepared an Updated FY 2010 Rebalanced/Updated FY 2008 - 2011 Transportation Improvement Program (TIP); now

**THEREFORE, BE IT RESOLVED** by the Montgomery Metropolitan Planning Organization (MPO) that the same does hereby adopt the FY-2010 Rebalanced/Updated FY 2008 – 2011 Transportation Improvement Program (TIP).

Adopted this the 5<sup>th</sup> day of January, 2010

 Date February 18, 2010  
Jim Byard, MPO Chairman

ATTEST:  
 Date 2/18/10  
Kenneth J. Groves, MPO Secretary

## TABLE OF CONTENTS

<b>TITLE AND CONTACT PAGE.....</b>	<b>i</b>
<b>MPO POLICY BOARD.....</b>	<b>ii</b>
<b>MPO TRANSPORTATION PLANNING STAFF.....</b>	<b>ii</b>
<b>TECHNICAL COORDINATING COMMITTEE.....</b>	<b>iii</b>
<b>CITIZENS ADVISORY COMMITTEE.....</b>	<b>v</b>
<b>MPO RESOLUTION.....</b>	<b>vi</b>
<b>TABLE OF CONTENTS.....</b>	<b>vii</b>
<b>1.0 TRANSPORTATION IMPROVEMENT PROGRAM: FISCAL YEARS 2008-2011.....</b>	<b>1</b>
1.1 Introduction.....	1
1.2 Level of Effort.....	2
1.3 8 Planning Factors.....	3
1.4 Financial Constraint.....	3
1.5 Environmental Mitigation and Climate Change Consideration.....	4
1.6 Air Quality Planning.....	5
1.7 Consistency with Other Plans.....	6
1.8 Bicycle and Pedestrian Consideration.....	8
1.9 TIP Document Preparation Methods.....	8
1.10 Amendment Procedures and Administrative Modifications .....	9
<b>2.0 TELUS PROJECTS (Local and State Government Projects).....</b>	<b>11</b>
2.1 TELUS PROJECT FUNDING CATEGORY DEFINITIONS.....	12
2.2 TELUS PROJECT SUMMARY GUIDE.....	15
2.3 TABLE 1 SURFACE TRANSPORTATION ATTRIBUTABLE PROJECTS .....	16
2.4 TABLE 2 OTHER SURFACE TRANSPORTATION PROGRAM PROJECTS.....	20
2.5 TABLE 3 NATIONAL HIGHWAY SYSTEM PROJECTS.....	22
2.6 TABLE 4 APPALACHIAN HIGHWAY PROJECTS.....	25
2.7 TABLE 5 INTERSTATE SYSTEM PROJECTS.....	26
2.8 TABLE 6 BRIDGE PROJECTS.....	27
2.9 TABLE 7 STATE FUNDED PROJECTS.....	28
2.10 TABLE 8 ENHANCEMENT PROJECTS.....	29
2.11 TABLE 9 TRANSIT PROJECTS.....	30
2.12 TABLE 10 SYSTEM MAINTENANCE PROJECTS.....	36
2.13 TABLE 11 SAFETY PROJECTS.....	37
2.14 TABLE 12 OTHER FEDERAL AND STATE AID PROJECTS.....	39
2.15 TABLE 13 CONGESTION MITIGATION AND AIR QUALITY PROJECTS.....	40
2.16 TABLE 14 HIGH PRIORITY AND CONGRESSIONAL EARMARK PROJECTS.....	41
2.17 AUTHORIZED PROJECTS FISCAL YEAR 2009.....	42
<b>3.0 APPENDICES.....</b>	<b>50</b>
3.1 FINANCIAL PLAN.....	51
3.2 FINANCIAL CONSTRAINT TABLE.....	53
3.3 LIST OF ACRONYMS AND ABBREVIATIONS.....	55
3.4 FUNDING CODES.....	56
3.5 MONTGOMERY TRANSPORTATION STUDY AREA MAP.....	61



# **1.0 TRANSPORTATION IMPROVEMENT PROGRAM FISCAL YEARS 2008-2011**

## **1.1 Introduction**

The Transportation Improvement Program (TIP) is a list of transportation projects developed by the Montgomery Metropolitan Planning Organization (MPO). The 12-member MPO has elected representatives from the Town of Coosada, the City of Millbrook, the City of Montgomery, the City of Prattville, and the City of Wetumpka, as well as County Commission representatives for Autauga, Elmore, and Montgomery Counties. The Alabama Department of Transportation Sixth Division Engineer and the City of Montgomery Director of Planning and Development also serve on the MPO as voting members and are not elected to an office. The MPO non-voting members also contribute to the planning process. The projects in the TIP are taken from the *Montgomery Study Area 2030 Long Range Transportation Plan* with the exception of safety, resurfacing, and few other special types of projects. In most cases, the *2030 Long Range Transportation Plan* projects must be done in phases through the TIP.

The Safe Accountable, Flexible, and Efficient Transportation Act – A Legacy for Users (SAFETEA-LU) requires TIPs to be fiscally constrained. This means that the MPO cannot put in more projects in the TIP than it can fund. In the past, the Montgomery MPO received dedicated STP monies which were allocated on the basis of the Montgomery Urbanized Area having a population greater than 200,000. However, due to a Census Bureau change in the definition of what and where the urbanized area is and the total urbanized area population being below 200,000, the Montgomery Area stopped receiving dedicated monies at the end of FY-02. The ALDOT does provide Surface Transportation Program Other Area funds in lieu of dedicated funds based on the 2000 Census urbanized area population of 196,892 (resulting from the new definition of what the new Montgomery Urbanized Area is currently). The end result was that the change of definition reduced area-wide funding by about 10%. The MPO selects the highway and congestion management projects for carry over funds and ALDOT has the option of funding proposed projects that exceed the Other Area funding

allocation or requiring the excess projects to be removed from the TIP in order to achieve fiscal constraint.

The City of Montgomery also receives Federal Transit Administration (FTA) formula and capital funds (Sections 5307 and 5309 respectively). Also, Autauga County also receives FTA Section 5311 funds for rural transportation in the area. The highway or transit project sponsor is responsible for providing the local match if local match is required.

The other projects shown in this TIP are State Discretionary Projects. They are as follows: Intelligent Transportation System (ITS), Bridge (BR), Interstate Maintenance (IM), National Highway System (NHS), State Surface Transportation Program (STP), Hazard Elimination and Safety (HES), STP Transportation Enhancement (TE), Other (OTH, and STP-Railroad (RR). The State also allocates FTA Section 5310 (vehicles for non-profits) and FTA Section 5311 (for rural public transportation). The Outer Loop Road in Montgomery is funded by Congressional allocation and is shown as a High Priority Program Project (HP).

## **1.2 LEVEL OF EFFORT**

Projects in the FY 2008-2011 TIP, which are referred to as LEVEL OF EFFORT (LVOE), represent certain unidentified projects which will be authorized during a given fiscal year. These projects are placed in the TIP according to selected funding programs with their anticipated apportionments for each fiscal year within the TIP. The selected funding programs include:

- Transportation Enhancement Projects
- Safety Projects such as hazard elimination roadway and rail, high speed rail, seat belt, blood alcohol content, etc.
- Transportation and Community and System Preservation
- Recreational Trails
- Federal Aid Resurfacing Program
- GARVEE Bond Projects
- County Allocated Funds such as, off system bridge, optional bridge, and STP non urban
- Federal Transit Sections 5311 (non-urban), and 5310 (Elderly and Disabilities)

Any of these LVOE type projects are pre-approved by the MPO and will not require any further MPO action prior to authorization. The MPO's will be notified as soon as the specific projects within their urban areas are selected and will have five days to decline the project.

### 1.3 Eight (8) Planning Factors

SAFETEA-LU identifies eight (8) areas to be considered in the transportation planning process, as follows:

1. Support the **economic vitality** of the metropolitan area, especially by enabling global competitiveness, productivity and efficiency.
2. Increase the **safety** of the transportation system for motorized and non-motorized users.
3. Increase the **security** of the transportation system for motorized and non-motorized users.
4. Increase the **accessibility and mobility** options available to people and for freight.
5. Protect and enhance the **environment**, promote energy conservation and improve the quality of life.
6. Enhance the **integration and connectivity** of the transportation system.
7. Promote efficient **system management** and **operation**.
8. Emphasize the **preservation** of the existing transportation system.

### 1.4 Financial Constraint

The TIP is financially constrained, which means that project costs are balanced against expected revenue. Using their project management system, ALDOT determines the projects that can be undertaken during the TIP time frame with expected federal and state funds. The only exception to this method involves projects funded with the Surface Transportation Attributable program and matched with local government funds. ALDOT calculates the funding levels for this program based on the urban area population of each MPO. The MPO Transportation Planning Staff balances these projects based on projects

proposed and selected for inclusion into the TIP with the calculated revenue. The appendix contains the financial plan for the TIP and financial constraint table for local government projects.

### **1.5 Environmental Mitigation and Climate Change Consideration**

Under SAFETEA-LU, MPOs are expected to take into account potential environmental impacts associated with the long-range transportation plan and try to mitigate those impacts. Closely related to this concept is the requirement that MPOs consult with other agencies to eliminate or minimize conflicts caused by transportation projects. In response to the rules the MPO Staff consulted with different agencies and had them review the Long Range Transportation Plan (LRTP) in order to see if it conflicted or was consistent with agency plans or laws regarding proposed transportation projects. Some of the agencies consulted for review and comment of the LRTP were the U.S. Fish and Wild Life Service, the U.S. Army Corps of Engineers, the Alabama Department of Environmental Management and the Alabama Historical Commission. Projects in the TIP are consistent with the LRTP with the exception maintenance projects, which generally don't have impacts, but just only temporary disruptions.

"According to the FHWA report Integrating Climate Change into the Transportation Planning Process, there is general scientific consensus that the earth is experiencing a long-term warming trend and that human-induced increases in atmospheric greenhouse gases (GHGs) may be the predominant cause. The combustion of fossil fuels is by far the biggest source of GHS emissions. In the United States, transportation is the largest source of GHG emissions, after electricity generation. Within the transportation sector, cars and trucks account for a majority of emissions. Opportunities to reduce GHG emissions from transportation include switching to alternative fuels, using more fuel efficient vehicles, and reducing the total number of miles driven. Each of these options requires a mixture of public and private sector involvement. Transportation planning activities, which influence how transportation systems are built and operated, can contribute to these strategies. In addition to

contributing to climate change, transportation will likely also be affected by climate change. Transportation infrastructure is vulnerable to predicted changes in sea level and increases in severe weather and extreme high temperatures. Long-term transportation planning will need to respond to these threats" (Introduction to Integrating Climate Change into the Transportation Planning Process, Federal Highway Administration, Final Report, July 2008).

In order to address transportation induced climate change, the Montgomery MPO will add a section to the 2035 LRTP that discusses and provides a plan of action transportation projects that are considered friendly to the environment, such as mass transportation (bus, freight and passenger rail) and other smart growth transportation oriented planning projects. As more is learned on the subject the TIP and long-range transportation plan will be modified accordingly.

## **1.6 Air Quality Planning**

The Clean Air Act (CAA) was originally adopted in 1963 and most recently amended in 1990. The purpose of the CAA is to improve air quality and to protect human health and the environment. The CAA requires the Environmental Protection Agency (EPA) to set National Ambient Air Quality Standards (NAAQS) for six pollutants, including ground-level ozone.

In 2008, EPA lowered the NAAQS for ozone from .084 to .075 parts per million. This lower standard could affect the Montgomery MPO area. To date the standards have not impacted the Montgomery area. EPA will decide by March 2010 if the Montgomery MPO area will be designated non-attainment for ozone. Non-attainment status will place additional requirements on the MPO. Chief among these will be the air quality conformity determination of the long-range transportation plan, the TIP, and transportation projects. Conformity is achieved when new NAAQS violations are not created, the frequency or severity of NAAQS violations are not increased, and the attainment of the NAAQS is not

delayed. These conditions could prevent the inclusion of some capacity projects in the TIP, unless justified that they won't impact the environment or air quality. The MPO will have until March 2011 to demonstrate conformity for the LRTP and the TIP, if it is determined to be in noncompliance with the new rules.

The process will require the TIP to be amended to include a conformity determination report and possibly the addition or removal of projects. If the conformity process is not complete by March 2011 new federally funded transportation projects will be limited to exempt projects, e.g. safety and mass transit.

### **1.7 Consistency with Other Plans**

There are general and specific directions under SAFETEA-LU (Section 6001) for the consistency requirement. In revising 23 USC 134, Section 6001(a)(g)(3) states "The secretary shall encourage each metropolitan planning organization to consult with officials responsible for other types of planning activities, such as, economic development, environmental protection, airport operations, and freight movements to coordinate its planning process with such planning activities. Under the metropolitan planning process, transportation plans and TIPs shall be developed with due consideration of other related planning activities" TIP specificity is found in 6001(a)(j)(3)(c): "Each project shall be consistent with the long-range transportation plan...." The latter is an implied instruction to include all plans in the TIP development process and is carried forward in FHWA interpretation of the revised 23 USC 134, and is to be found in 23 CFR 450.324.

The MPO addresses this requirement by including planning and economic development personnel from the state and local level on the Technical Coordinating Committee (TCC). In addition, the MPO consults with agencies and officials responsible for other planning activities within the Study Area that are affected by transportation when developing the Long Range Transportation Plan

(LRTP) and Transportation Improvement Program (TIP). This includes Federal, State and Local agencies responsible for:

- Economic growth and development
- Environmental protection
- Airport operations
- Freight movement
- Land use management
- Natural resources
- Conservation
- Historic preservation
- Human service transportation providers

A contact list of these officials and agencies has been developed and is maintained. These agencies are invited to attend all MPO, TCC and CAC and meetings, so as to be involved in the transportation planning process continuously. In addition, a request to these agencies is made to compare the draft LRTP and TIP with their plans, maps, and inventories. Incorporating these key individuals in the transportation planning process allows for broad acknowledgement of transportation planning and land use development activities at the local and regional level which can afford opportunities for cooperation and coordination. The spirit and intent of SAFETEA-LU 6001 are clear. In accordance with Public Law 109-59 policy provisions and subsequent agency interpretation, the TIP should acknowledge consistency with other plans that include transportation and land use components: Regional, Long Range, municipal and county Comprehensive and Master Plans (Airport, Seaport, Multimodal, Transit, Utility, and independent bridge authorities), Congestion Management Plans, Air Quality Conformity Determination, Freight, Bicycle/Pedestrian, Public Participation Process, and Environmental Plans.

## **1.8 Bicycle and Pedestrian Consideration**

Federal laws require MPOs and States to consider bicycle and pedestrian needs in all comprehensive transportation plans. The Federal Highway Administration (FHWA) guidelines related to this law state that bicyclist and pedestrians will be accommodated in the design of new and improved transportation facilities. In addition, the decision not to consider the needs of bicyclist and pedestrians should be the exception and not the rule.

## **1.9 TIP Document Preparation Methods**

The Montgomery MPO Transportation Planning Staff used estimated funding levels from the ALDOT's urban area funding availability report for the Surface Transportation Attributable program for the updated FY 2008-2011 TIP. Also, projects that were in the ALDOT's Comprehensive Project Management System (CPMS) and new Transportation Economic and Land Use System (TELUS) were consulted for projects that are planned and have Federal and State project numbers for FY 2008 - 2011. The TELUS is an internet based program that interfaces with the ALDOT CPMS and automatically updates when ALDOT's CPMS is modified. MPO Staff has access to TELUS. The Urban Area Funding Availability Report is derived from the CPMS and is for MPO jurisdiction projects only.

Fiscal constraint for projects proposed and administered by ALDOT is demonstrated in the FY 2008 - 2011 TIP/STIP Financial Plan.

On October 7, 2009 the ALDOT provided the MPO Transportation Planning Staff with an Urban Area Funding Availability Report (Federal Funding Only) projects list that was balanced with planned projects against anticipated funds for existing and future years. The list was generated from ALDOT's CPMS for FY-2008-2011 by funding category.



A 14 day public involvement comment period was held from October 13-26, 2009 to solicit comments and involve the public in the planning and programming process, along with one public involvement meeting being held on October 22, 2009 from 5:00 p.m.-7:00 p.m. A public notice was placed in the general circulation newspapers, as well as on the MPO internet website, in order to notify the general public about the rebalanced/updated TIP (TIP document, technical summary and comments forms were on the website as well for review and comment). Further, the public notice, TIP summary, document and comment forms were placed at 14 public community locations in Montgomery, Elmore and Autauga Counties in order for people that couldn't make it to the public involvement meeting, could review the document and comment. A public involvement summary was completed and compiled into a separate document, once the 14 day public comment period ended in order to document public involvement attempts and efforts made to include and solicit public input/comment.

#### **1.10 Amendment Process/Administrative Modifications**

The amendment process is a formal process, whereby the MPO, TCC and CAC will publically meet in order to take formal action to approve or deny a proposed amendment, such as a cost increase, decrease or add a new project. The FY 2008-2011 TIP document can and will be amended periodically, to adjust funding, time-frames or other factors relevant to projects. New projects may be added if appropriate and if funding is available.

The implementing planning regulations for SAFETEA-LU include a provision for an administrative modification; 23 CFR 450.104 includes the following definition:

*Administrative modification* means a minor revision to a long-range statewide or metropolitan transportation plan, Transportation Improvement program (TIP), or Statewide Transportation Improvement Program (STIP) that includes minor changes to project/project phase costs, minor changes to funding sources of previously-included projects, and minor changes to project/project phase initiation dates. An administrative modification is a revision that does not require public review and comment, re-demonstration

of fiscal constraint, or a conformity determination (in nonattainment and maintenance areas).

To implement this provision, the Federal Highway Administration (FHWA) Alabama Division and Alabama Department of Transportation (ALDOT) have agreed that a formal TIP amendment is required for a “highway-oriented” project when one or more of the following criteria are met:

- The change adds a new individual project
- The change adversely impacts fiscal constraint
- The change results in major scope changes
- The change deletes an individually listed project from the TIP
- The change results in a cost increase of 20% or \$1,000,000, whichever is less

A change that does not meet any of these criteria may be processed as an administrative modification, subject to the approval of this operating procedure by the MPO policy board.

## **2.0 TELUS PROJECTS (LOCAL AND STATE GOVERNMENT PROJECTS)**

**An asterisk (\*) next to a project ID number (100053509\*) indicates that the a project includes sidewalks, bike paths or lanes, enhanced shoulders, multi-use trails, or some other enhancement designed for bicycle or pedestrian use. The asterisk (\*) is only applicable to Authorized Projects only, found in Table 2.17.**

## 2.1 TELUS Project Funding Category Definitions -

### Surface Transportation Attributable Projects –

Surface Transportation is a Federal-aid highway funding program that funds a broad range of surface transportation capital needs, including many roads, transit, seaport and airport access, vanpool, bicycle, and pedestrian facilities. This funding was originally established under TEA-21 and reinforced in SAFETEA-LU. An example would be: projects using funds coded **STPOA** in TELUS indicates *Surface Transportation Other Area funding allocated for Montgomery, AL*.

### Other Surface Transportation Program Projects –

Surface Transportation funding has been discussed earlier. In addition, there are at least 37 different codes for fund sourcing under the category of *Other* Surface Transportation funding. These types of funds may be used for capacity, bridge work, intersection, and other operational improvements. In TELUS, for example, coding of STPAA indicates *Surface Transportation Program Any Area*. Others might be ACFP (Advanced Construction Primary Program), CESR (Rural Secondary), or DHP8 (Surface Transportation Innovative Projects).

### National Highway Systems –

The National Highway System (NHS) includes the Interstate Highway System as well as other roads important to the nation's economy, defense, and mobility. The NHS was developed by the Department of Transportation (DOT) in cooperation with the states, local officials, and metropolitan planning organizations (MPOs). Funding under NHS carries NHF (National Highway Funds), NHSP (National Highway System Project), ACNH (Advance Construction National Highway System), or similar coding.

Appalachian Highway System Projects – TEA-21 provided funding under Section 1117 for funding of highway corridor projects in 13 states to promote economic development. Most of the ADHS (92%+) is part of the National Highway System. Funding codes associated with the ADHS are APDV (Appalachian Development), CX54J (APD Corridor X 2003), and ACAP (Advance Construction Appalachian Development). Only applicable in Appalachia area of the State.

### Interstate System Projects –

This Federal-aid funding program is confined to capacity or interchange facilities on the Interstate System. Activities may include new projects, phases of projects (in Alabama, the term 'scope' is used) or system maintenance. This type of funding will use codes such as IREG (Interstate Regular) and IMNT (Interstate Maintenance). The Interstate System is a component of the National Highway System (NHS).

Bridge Projects (State and Federal) – This includes new facility construction, existing bridge repair, and/or replacement. Projects selected by ALDOT are based on regional needs, maintenance and inspection criteria (sufficiency ratings), and available funding. If sufficiency ratings fall below a certain point, the bridge is automatically scheduled for repair or replacement. This project category is currently sensitive to public scrutiny after structural failures in the states of Washington and California. Typical funding codes are: ACBR (Advance Construction Bridge), BRDF (Bridge Replacement Discretionary Fund), and BRPL (Bridge Replacement).

State Funded Projects – These are typically smaller projects or phases of larger projects for which there is no Federal funding available, a county or municipality is participating with the state to proceed on a project rather than wait on Federal assistance (funds either not available or cannot be used on a certain project type), or in which the state simply chooses to do certain projects or project types with state funds. Existing project examples would include a resurfacing, patching, and striping project within a municipal city limits, a training program on non-reimbursable state grant, DBE training extended beyond Federal funding limits, or industrial access. There are a variety of scenarios in which this type of project would be done. Some common funding program

identification codes would be STAT (State Program), STATC (State Program – Contract Construction), or STATS (State Program – Special Aid).

Enhancement Projects –

TEA-21 requires that 10% of federal highway funds allocated to the state (STP funds) are to be set aside (equal to or greater than the amount allocated in FY2005) for transportation enhancement activities. This funding category has specific and exclusive eligible activities listed in SAFETEA-LU. They may be found under 23 USC 101(a)(35):

- A. Provision of safety and educational activities for pedestrians and bicyclists.
- B. Acquisition of scenic easements and scenic or historic sites (including historic battlefields).
- C. Scenic or historic highway programs (including the provision of tourist and welcome center facilities).
- D. Landscaping and other scenic beautification.
- E. Historic preservation.
- F. Rehabilitation and operation of historic transportation buildings, structures, or facilities (including historic railroad facilities and canals).
- G. Preservation of abandoned railway corridors (including the conversion and use of the corridors for pedestrian or bicycle trails).
- H. Inventory, control, and removal of outdoor advertising.
- I. Archaeological planning and research.
- J. Environmental mitigation
  - 1. to address water pollution due to highway runoff; or
  - 2. to reduce vehicle-caused wildlife mortality while maintaining habitat connectivity.
- K. Establishment of transportation museums.

Transit Projects – Local transit operators provide projects to the MPOs in priority order, and they in turn use these to develop a Four or Five Year Transit Development Plan (TDP). Transit projects are required for the Long Range Transportation Plan (LRTP) and the Transportation Improvement Program (TIP). This type of project is typically for fixed-route services in the MPO Planning Area and the primary funding provider is FTA (Federal Transit Administration) with supplemental soft-match funding from local governments. For informational purposes, Transportation Disadvantaged (TD) projects with their fund sources are usually included in major planning documents. Common coding examples would be FTA09 (Federal Transit Administration Section 5307 for FY2009), JARC (Job Access and Reverse Commute), and RPTO (Federal Transit Administration Section 5311).

System Maintenance Projects – Roadway and bridge maintenance is provided according to system specifications, facility-life maintenance scheduling, and available funding. Projects are usually assigned a ‘99’ code designation. Projects include 99004 (Shoulder Repair), 99005 (Bridge Painting), 99006 (Traffic Signal Upgrading), 99054 (Roadway Mowing), and simply MAIN (Maintenance Projects).

Safety Projects – SAFETEA-LU restructured the original TEA-21 Highway Safety Improvement Program (HSIP) to provide more comprehensive funding to states for specific types of projects. The program requires a state to develop a Statewide Highway Safety Plan (SHSP) and the project must be included in the plan. The candidate project should “correct or improve a hazardous road location or feature, or address a highway safety problem” to become eligible for funding. Eligible types of projects include:

- 1. Safety-conscious planning;
- 2. Improvement in the collection and analysis of crash data;
- 3. Planning, integrated interoperable emergency communications equipment, operational activities, or traffic enforcement activities (including police assistance) relating to work-zone safety;

4. The addition or retrofitting of structures or other measures to eliminate or reduce accidents involving vehicles and wildlife;
5. Construction and operational improvements on high-risk rural roads;
6. Improvements for safety of the disabled;
7. Installation and maintenance of signs at pedestrian-bicycle crossings and in school zones.

Sample coding for safety projects would be HESS (Hazard Elimination Program), STPSA (Any Hazard), and BELT (Safety Incentive Seat Belt Apportionment).

Other Federal and State Aid Projects – This is a miscellaneous category for projects that do not fit easily into other categories. Some sample funding codes are: PLN8 (Surface Transportation Metropolitan Planning), SPAR (State Planning and Research), STRP (State Revenue Sharing), UABC (Urban Extension), and CMAQ (Congestion Mitigation Air Quality).

High Priority and Congressional Earmark Projects – High Priority funding is project-specific funding provided by TEA-21 and extended by SAFETEA-LU. High Priority Projects (HPP) may be advanced under an Advanced Construction provision in 23 USC 117 without additional funding until HPP funds become available. Congressional Earmarks are legislative actions providing funding for a specific purpose or project outside the normal funding allocation process. High Priority coding could be AHPP (Advanced Construction High Priority Corridor) or HPPP (High Priority Project Program). Earmark funding may carry any number of codes, but some attached to Alabama projects are: FTA3C (Capital New Starts/Fed Earmark) and TCSPE (Transportation Communications System Earmarked Grant).

## 2.2 WEB TELUS Project Report Format

Surface Transportation Attributable Projects											
Project Family ID	Project Number (FANBR)	Project Description	Project Length (miles)	SCP	STS	Project Type	FY	Map ID	Conformity Year	Requirement	Other Cost
Sponsor : ALDOT											
21720	100040317	CR-17 (OLD MADISON PIKE RD) FROM CR-19 (SLAUGHTER RD) TO THE WEST ENTRANCE OF THORNTON INDUSTRIAL PARK	0.6	CN	P	GRADE, DRAIN, BA & BRG			NA	NA	\$1,664,000
	STPAA-STPHV - 8525 ( 600 )										\$0
27919	100048727	INTERSECTION IMPROVEMENTS AT SRV (US-431) AND CR-321 (DUG HILL ROAD)	0.0	CN	P	INTERSECTION IMPROVEMENTS	2010	4.5	NA	NA	\$0
	STPAAF-STPHV - 0001 ( 531 )										\$0
Total By Sponsor								\$5,664,000		All Funds	\$7,080,000
Sponsor : City of Huntsville											
1959	100008533	ADD LANES CR-388 ( MERIDIAN ST) FROM CR-95 (OAKWOOD AV) TO PRATT AVENUE	0.72	CN	P	ADDITIONAL ROADWAY LANES	2009	1.01	NA	NA	\$1,581,338
	STPHV - 8539 ( 600 )										\$0
											\$395,335
17570	100051396	WIDEN CR-388 (MERIDIAN ST) (PH 2) FROM PRATT AV TO MONROE ST	0.3	UT	P	UTILITY ADJUSTMENT	2009	1.02	NA		\$4,000
	STPHV - 4500 ( )										
	10003483	WIDEN MERIDIAN ST (PH 2) FR PRATT AV TO MONROE ST PROJECT SPONSOR CITY OF HUNTSVILLE.	0.3	CN	P	ADDITIONAL ROADWAY LANES					\$1,817,088
	STPAA - 4500 ( 213 )										\$454,272
											\$0
17571	100033490	OF PRATT AVE, INCLUDING BRIDGE REPLACEMENT @ PINHOOK CREEK (BIN# 008439) IN THE CITY OF HUNTSVILLE	1.1	RW	P	ADDITIONAL ROADWAY LANES					\$199,680
	STPHV - 4500 ( )										\$0
											\$49,920
											\$249,600

Project sponsor

Project Type

Map ID used for locating projects on maps linked to tables

Year opened to traffic – Conformity Determination would determine Exempt/non-exempt status

Project Status  
P=Planned  
A=Authorized

Fiscal Year work will be performed

Project ID - 9 digits

Route and termini description

Type of work being performed

Scope of Work  
PE =Preliminary Engineering  
RW=Right of Way  
UT=Utilities  
CN=Construction  
TR=Transit

Funding code and Federal Aid number

## 2.4.1 Surface Transportation Attributable Projects

Project Family ID	Project Number (FANBR)	Project Description	Project Length (miles)	SCP	STS	Project Type	FY	Map ID	Conformity Year	Conformity Requirement	Federal State Other	Estimated Total Cost
Sponsor : City of Montgomery												
17449	100040817	WIDEN AND RESURFACE ZELDA ROAD FROM ANN STREET TO CARTER HILL ROAD	1.0	CN	P	WIDENING & RESURFACING (RDWY)	2011	7.0	NA	NA	\$1,248,000 \$0 \$312,000	\$1,560,000
26765	100046478	Herron Street Improvements (Resurface, Landscape & Convert One Way to Two Way Traffic	0.062	CN	P	INTERSECTION IMPROVEMENTS	2010	13.0	NA	NA	\$781,125 \$0 \$195,281	\$976,406
27010	100053060	WIDEN & RESURFACE ANN STREET FROM BREWTON ST. AND REALIGN TO CR-235 (FEDERAL DRIVE) (PHASE 1)	0.22	RW	P	GRADE, DRAIN, BASE AND PAVE	2010	0.0	NA		\$83,200 \$0 \$20,800	\$104,000
29087	100050336	PURCHASE AND INSTALLATION OF CLOSED CIRCUIT TELEVISION (CCTV) CAMERAS AT VARIOUS INTERSECTIONS IN THE CITY OF MONTGOMERY	0.0	CN	P	UNCLASSIFIED	2010	16.0	NA		\$158,080 \$0 \$39,520	\$197,600
31913	100054274	RESURFACE SOUTH COURT STREET FROM CR-233 (FAIRVIEW AVENUE) TO SR-6 (US-331,SOUTH BOULEVARD)	1.72	PE	P	RESURFACING	2010	0.0	NA		\$180,000 \$0 \$45,000	\$225,000
31914	100054278	RESURFACE ADAMS AVE FROM CR-232 (DECATUR STREET) TO SOUTH COURT STREET, AND WASHINGTON AVE FROM CR-232 (DECATUR STREET) TO SOUTH COURT @ LEE STREET	0.7	PE	P	RESURFACING	2010	0.0	NA		\$195,000 \$0 \$48,750	\$243,750
31916	100054281	RESURFACE SOUTH PERRY STREET FROM CR-233 (FAIRVIEW AVENUE) TO ARBA STREET	1.0	PE	P	RESURFACING	2010	0.0	NA		\$150,000 \$0 \$37,500	\$187,500
31917	100054283	RESURFACE CR-233 (FAIRVIEW AVENUE) FROM SOUTH COURT STREET TO I-65	0.81	PE	P	RESURFACING	2010	0.0	NA		\$195,000 \$0 \$48,750	\$243,750



## 2.4.1 Surface Transportation Attributable Projects

Project Family ID	Project Number (FANBR)	Project Description	Project Length (miles)	SCP	STS	Project Type	FY	Map ID	Conformity Year	Conformity Requirement	Federal State Other	Estimated Total Cost
Sponsor : City of Montgomery												
17449	100040817	WIDEN AND RESURFACE ZELDA ROAD FROM ANN STREET TO CARTER HILL ROAD	1.0	CN	P	WIDENING & RESURFACING (RDWY)	2011	7.0	NA	NA	\$1,248,000 \$0 \$312,000	\$1,560,000
26765	100046478	Herron Street Improvements (Resurface, Landscape & Convert One Way to Two Way Traffic	0.062	CN	P	INTERSECTION IMPROVEMENTS	2010	13.0	NA	NA	\$781,125 \$0 \$195,281	\$976,406
27010	100053060	WIDEN & RESURFACE ANN STREET FROM BREWTON ST. AND REALIGN TO CR-235 (FEDERAL DRIVE) (PHASE 1)	0.22	RW	P	GRADE, DRAIN, BASE AND PAVE	2010	0.0	NA		\$83,200 \$0 \$20,800	\$104,000
29087	100050336	PURCHASE AND INSTALLATION OF CLOSED CIRCUIT TELEVISION (CCTV) CAMERAS AT VARIOUS INTERSECTIONS IN THE CITY OF MONTGOMERY	0.0	CN	P	UNCLASSIFIED	2010	16.0	NA		\$158,080 \$0 \$39,520	\$197,600
31913	100054274	RESURFACE SOUTH COURT STREET FROM CR-233 (FAIRVIEW AVENUE) TO SR-6 (US-331,SOUTH BOULEVARD)	1.72	PE	P	RESURFACING	2010	0.0	NA		\$180,000 \$0 \$45,000	\$225,000
31914	100054278	RESURFACE ADAMS AVE FROM CR-232 (DECATUR STREET) TO SOUTH COURT STREET, AND WASHINGTON AVE FROM CR-232 (DECATUR STREET) TO SOUTH COURT @ LEE STREET	0.7	PE	P	RESURFACING	2010	0.0	NA		\$195,000 \$0 \$48,750	\$243,750
31916	100054281	RESURFACE SOUTH PERRY STREET FROM CR-233 (FAIRVIEW AVENUE) TO ARBA STREET	1.0	PE	P	RESURFACING	2010	0.0	NA		\$150,000 \$0 \$37,500	\$187,500
31917	100054283	RESURFACE CR-233 (FAIRVIEW AVENUE) FROM SOUTH COURT STREET TO I-65	0.81	PE	P	RESURFACING	2010	0.0	NA		\$195,000 \$0 \$48,750	\$243,750

## 2.4.1 Surface Transportation Attributable Projects

Project Family ID	Project Number (FANBR)	Project Description	Project Length (miles)	SCP	STS	Project Type	FY	Map ID	Conformity Year	Requirement	Federal State Other	Estimated Total Cost
	100054291		0.5	CN	P	UNCLASSIFIED	2011	0.0	NA		\$436,507	
	STPOA - CN1C ( )										\$0	\$545,634
											\$109,127	

<b>Total By Sponsor</b>	<b>Federal</b>						<b>\$478,479</b>	<b>All Funds</b>			<b>\$598,099</b>
-------------------------	----------------	--	--	--	--	--	------------------	------------------	--	--	------------------

<b>Sponsor :</b>	<b>Elmore County Commission</b>											
------------------	---------------------------------	--	--	--	--	--	--	--	--	--	--	--

10879	100053771	RESURFACE CR-2 (ALABAMA RIVER PARKWAY) FROM SR-143 TO ALABAMA RIVER	1.69	CN	P	RESURFACING	2010	0.0	NA		\$522,189	
	STMOA - 7804 ( 601 )										\$0	\$522,189
											\$0	
	100050971	WIDEN & RESURFACE CR-17 (AIRPORT ROAD) FROM CR-23 (COOSADA ROAD) TO KENNEDY AVENUE	2.1	CN	P	WIDENING & RESURFACING (RDWY)	2010	22.0	NA		\$299,819	
	STPOA - 7908 ( )										\$0	\$374,774
											\$74,955	
29574	100050988	CORRIDOR STUDY NEW ROUTE FROM SR-14 TO CR-7 (DEATSVILLE HIGHWAY)	3.0	PE	P	CORRIDOR STUDY	2010	101.0	NA		\$166,400	
	STPOA - PE07 ( )										\$0	\$208,000
											\$41,600	
10879	100054297	PAVING SHOULDER CR-59 (FIRE TOWER ROAD) FROM CR-8 (REDLAND ROAD) TO SR-14	3.88	CN	P	SHOULDER PAVING	2010	0.0	NA		\$223,954	
	STPOA - 2624 ( )										\$0	\$279,942
											\$55,988	
	100054295	RESURFACE CR-8 (REDLAND ROAD) FROM CR-4 (RIFLE RANGE ROAD) TO CR-116 (MARSHALL ROAD)	7.7	CN	P	SHOULDER PAVING	2011	0.0	NA		\$353,495	
	STPOA - 2603 ( )										\$0	\$441,869
											\$88,374	

<b>Total By Sponsor</b>	<b>Federal</b>						<b>\$1,565,858</b>	<b>All Funds</b>			<b>\$1,826,775</b>
-------------------------	----------------	--	--	--	--	--	--------------------	------------------	--	--	--------------------

<b>Sponsor :</b>	<b>Montgomery County Commission</b>											
------------------	-------------------------------------	--	--	--	--	--	--	--	--	--	--	--

11753	100050969	RESURFACE CR-40 (MERIWETHER ROAD) FROM SR-6 (US-231) TO CR-85 (PIKE ROAD)	4.3	CN	P	WIDENING & RESURFACING (RDWY)	2010	25.0	NA		\$484,557	
	STPOA - 7901 ( )										\$0	\$605,697
											\$121,139	
	100050968	RESURFACE CR-24 (E OLD HAYNVILLE ROAD) FROM SR-9 (US-331) TO CR-61 (HOBBIE ROAD)	4.76	CN	P	RESURFACING	2011	26.0	NA		\$643,422	
	STPOA - 5105 ( )										\$0	\$804,278
											\$160,856	

## 2.4.1 Surface Transportation Attributable Projects

Project Family ID	Project Number (FANBR)	Project Description	Project Length (miles)	SCP STS	Project Type	FY	Map ID	Conformity Year	Requirement	Federal State Other	Estimated Total Cost
Total By Sponsor					Federal		\$1,127,979		All Funds		\$1,409,974

## 2.4.2 Other Surface Transportation Program Projects

Project Family ID	Project Number (FANBR)	Project Description	Project Length (miles)	SCP	STS	Project Type	FY	Map ID	Conformity Year	Requirement	Federal State Other	Estimated Total Cost
Sponsor : ALDOT												
24491	100050520	SR-110 ADD LANES FROM CR-137 (VAUGHN RD) TO THE OUTER LOOP	2.81	RW	P	GRADE, DRAIN, BASE AND PAVE	2011	76.0	NA		\$2,676,636	
	STPOA - 0110 ( )										\$669,159	\$3,345,795
											\$0	
28988	100050187	ADDITIONAL LANES ON SR-110 FROM CR-137 (VAUGHN RD) TO CR-294 (BRIDLEBROOK BLVD)	1.037	CN	P	ADDITIONAL ROADWAY LANES	2011	137.0	NA		\$2,433,306	
	STPOA - 0110 ( )										\$608,326	\$3,041,632
											\$0	
30296	100052058	IMPROVEMENTS TO CR-29 (OLD FARM LANE) FROM PRATTVILLE CITY LIMITS TO CR-50 (ROCKY MOUNT RD) (PHASE III)	0.965	CN	P	GRADE, DRAIN, BASE AND PAVE	2010	140.0	NA		\$2,400,000	
	STPOA - 7814 ( )										\$600,000	\$3,000,000
											\$0	
	100052056	IMPROVEMENTS TO CR-29 (OLD FARM LANE) FROM NORTH OF CR-50 (ROCKY MOUNT RD) TO SR-14 (PHASE II)	0.58	CN	P	GRADE, DRAIN, BASE AND PAVE	2011	139.0	NA		\$1,903,616	
	STPOA - 7814 ( )										\$475,904	\$2,379,520
											\$0	
30329	100052873	RESURFACE SR-271 (TAYLOR ROAD) FROM SR-6 (US-231) TO CR-232 (VAUGHN ROAD) (FY2009 PHASE2)	3.148	FM	P	RESURFACING	2010	0.0	NA		\$2,067,459	
	STPOA - 0271 ( 501 )										\$516,865	\$2,584,324
											\$0	
	100052872	RESURFACE SR-8 (US-80) FROM CR-43 (BELL ROAD) TO I-85 (FY2010 PHASE1)	4.74	FM	P	WIDENING & RESURFACING (RDWY)	2010	0.0	NA		\$2,520,000	
	STPAA-HSIP - 0008 ( 556 )										\$630,000	\$3,150,000
											\$0	
2037	100032479	SR-14 FR CALLOWAY CR TO JCT OF SR-212 (ADD LANES)	1.659	UT	P	UTILITY ADJUSTMENT	2010	80.0	NA	NA	\$41,600	
	STPAA - 0014 ( 503 )										\$10,400	\$52,000
											\$0	
	100008917		1.659	CN	P	GRADE, DRAIN, BASE AND PAVE	2010	80.0	NA	NA	\$4,066,816	
	STPAA - 0014 ( 503 )										\$1,016,704	\$5,083,520
											\$0	
25176	100052328	SR-14 INTERSECTION IMPROVEMENT AT SR-143 IN ELMORE	0.01	RW	P	INTERSECTION IMPROVEMENTS	2010	0.0	NA		\$1,664,000	
	STPAA - 0014 ( )										\$416,000	\$2,080,000
											\$0	
Total By Sponsor							Federal	\$19,773,433	All Funds		\$24,716,792	

## 2.4.2 Other Surface Transportation Program Projects

Project Family ID	Project Number (FANBR)	Project Description	Project Length (miles)	SCP	STS	Project Type	FY	Map ID	Conformity Year	Requirement	Federal State Other	Estimated Total Cost
Sponsor : City of Montgomery												
29317	100050660	MT. MEIGS ROAD SIDEWALKS AND STREETScape IN THE CITY OF MONTGOMERY. THIS PROJECT IS LOCATED ON MT MEIGS ROAD FROM ANN STREET TO HOPPER STREET IN THE CITY OF MONTGOMERY.	0.0	CN	P	STREETSCAPE	2010	37.0	NA		\$120,000	
STPOA-STPTE - TE07 ( 903 )											\$0	\$150,000
											\$30,000	
Total By Sponsor						Federal		\$120,000	All Funds			\$150,000
Sponsor : City of Prattville												
30296	100052057	IMPROVEMENTS TO CR-29 (OLD FARM LANE) FROM PRATTVILLE CITY LIMITS TO NORTH OF CR-50 (ROCKY MOUNT RD) (PHASE III)	0.965	PE	P	GRADE, DRAIN, BASE AND PAVE	2010	0.0	NA		\$270,400	
STPOA - 7814 ( )											\$67,600	\$338,000
											\$0	
Total By Sponsor						Federal		\$270,400	All Funds			\$338,000
Sponsor : NEW PROJECT												
11753	100054718	RESURFACE CR-24 (CLOVERFIELD/FEDERAL RD.) FROM LOWNDES CO. LINE TO SR-3 (US-31) (SITE 1) & CR-39 (WOODLEY RD.) FROM CR-030 TO MONTGOMERY CITY LIMITS (SITE 2) - MCP 51-65-108.02	8.02	CN	P	RESURFACING	2010	0.0	NA	EXEMPT	\$530,000	
STMNU-STPNU - CN1C ( 216 )											\$0	\$530,000
											\$0	
Total By Sponsor						Federal		\$530,000	All Funds			\$530,000

## 2.5 Table 3 National Highway System Projects

Project Family ID	Project Number (FANBR)	Project Description	Project Length (miles)	SCP	STS	Project Type	FY	Map ID	Conformity Year	Requirement	Federal State Other	Estimated Total Cost
Sponsor : ALDOT												
12	100004451	US-82 FROM SR-14 TO US-31 IN PRATTVILLE	2.74	RW	P	GRADE, DRAIN, BASE, PAVE & BRG	2010	49.0	NA	NA	\$319,461	
	NH - 0006 ( 504 )										\$79,865	\$399,327
											\$0	
	100004452	US-82 FROM SR-206 TO SR-14 IN PRATTVILLE	2.44	RW	P	GRADE, DRAIN, BASE AND PAVE	2010	50.0	NA	NA	\$317,795	
	NH - 0006 ( 535 )										\$79,449	\$397,243
											\$0	
	100004463	US-82 FROM SR-14 TO US-31 IN PRATTVILLE	2.74	UT	P	UTILITY ADJUSTMENT	2010	49.0	NA	NA	\$1,700,794	
	NH - 0006 ( 504 )										\$425,199	\$2,125,993
900	100004464	US-82 FROM SR-206 TO SR-14 IN PRATTVILLE	2.44	UT	P	UTILITY ADJUSTMENT	2010	50.0	NA	NA	\$629,924	
	NH - 0006 ( 535 )										\$157,481	\$787,405
											\$0	
	100004425	US-82 FROM SR-14 TO US-31 IN PRATTVILLE	2.74	CN	P	GRADE, DRAIN, BASE, PAVE & BRG	2011	49.0	NA	NA	\$10,631,000	
	NH - 0006 ( 504 )										\$2,657,750	\$13,288,750
											\$0	
	100004427	US-82 FROM SR-206 TO SR-14 IN PRATTVILLE	2.44	CN	P	GRADE, DRAIN, BASE AND PAVE	2011	50.0	NA	NA	\$3,500,923	
	NH - 0006 ( 535 )										\$875,231	\$4,376,154
12714	100049117	ADDITIONAL LANES SR-9 (US-231) FROM CR-8 (REDLAND RD) TO NEAR CR-200 (BLUE RIDGE RD) & WETUMPKA WELCOME CENTER	1.523	UT	P	UTILITY ADJUSTMENT	2010	51.0	NA		\$224,973	
	NH - 0009 ( )										\$56,243	\$281,216
											\$0	
12714	100045612		0.9	CN	P	GRADE, DRAIN, BASE, PAVE & BRG	2010	0.0	NA	NA	\$822,016	
	NHF-BRF - 0009 ( 532 )										\$205,504	\$1,027,520
											\$0	
12714	100050517	EXTEND SERVICE ROAD ALONG SR-9 (NORTHERN BLVD) NEAR TODD RD TO NORTH OF INTERSECTION LAGOON PARK DR & PLANTATION	0.763	RW	P	GRADE, DRAIN, BASE AND PAVE	2010	0.0	NA		\$89,989	
	NH - 0009 ( )										\$22,497	\$112,486
											\$0	
12714	100050518	EXTEND SERVICE ROAD ALONG SR-9 (NORTHERN BLVD) FROM TODD RD TO NORTH OF INTERSECTION LAGOON PARK & PLANTATION	0.763	UT	P	GRADE, DRAIN, BASE AND PAVE	2010	0.0	NA		\$89,989	
	NH - 0009 ( )										\$22,497	\$112,486
											\$0	

## 2.5 Table 3 National Highway System Projects

Project Family ID	Project Number (FANBR)	Project Description	Project Length (miles)	SCP	STS	Project Type	FY	Map ID	Conformity Year	Requirement	Federal State Other	Estimated Total Cost
	100050519	EXTEND SERVICE ROAD ALONG SR-9 (NORTHERN BLVD) FROM NEAR TODD RD TO NORTH OF INTERSECTION LAGOON PARK DR & PLANTATION	0.763	CN	P	GRADE, DRAIN, BASE AND PAVE	2011	0.0	NA		\$665,600 \$166,400 \$0	\$832,000
25922	100045918	ADD LANES ON I-85 FROM 1.5 MILES EAST OF SR-271 TO OUTERLOOP INTERCHANGE	3.955	PE	P	ADDITIONAL ROADWAY LANES	2011	57.0	NA	NA	\$561,532 \$140,383 \$0	\$701,915
29189	100051237	INTERCHANGE MODIFICATION ON I-85 @ PERRY HILL ROAD (EXIT 4) ADD LOOP RAMP	0.01	CN	P	GRADE, DRAIN, BASE AND PAVE	2010	124.0	NA		\$1,664,000 \$416,000 \$0	\$2,080,000
30329	100051873	RESURFACE SR-3 (US-31) FROM CSXT RR BRIDGE TO SOUTH END OF ALABAMA RIVER BRIDGE	9.81	FM	P	WIDENING & RESURFACING (RDWY)	2010	132.0	NA		\$4,313,961 \$1,078,490 \$0	\$5,392,452
	100053053	RESURFACE SR-9 (US-331) FROM SOUTHERN CITY LIMITS OF MONTGOMERY TO SR-6 (US-82)	2.047	FM	P	RESURFACING	2011	0.0	NA		\$2,347,802 \$586,951 \$0	\$2,934,753
900	100052730	ADDITIONAL LANES SR-9 (US-231) FROM CR-8 (REDLAND RD) TO NEAR CR-200 (BLUE RIDGE RD) & WETUMPKA WELCOME CENTER	1.523	RW	P	ADDITIONAL ROADWAY LANES	2010	0.0	NA		\$108,160 \$27,040 \$0	\$135,200
30329	100051864	RESURFACE SR-9 (US-231) FROM TALLAPOOSA RIVER BRIDGE TO SR-21	8.522	FM	P	WIDENING & RESURFACING (RDWY)	2010	133.0	NA		\$3,273,446 \$818,362 \$0	\$4,091,808
	100052164	RESURFACE AND 2' SAFETY WIDENING ON SR-53 (US-231) FROM CR-89 @ PINE LEVEL TO DRY CREEK BRIDGE	4.64	FM	P	WIDENING & RESURFACING (RDWY)	2010	134.0	NA		\$2,923,692 \$730,923 \$0	\$3,654,614
	100052888	RESURFACE SR-21 (US-231) FROM SR-9 TO END OF 4-LANE NORTH OF WALLSBORO (FY 2010 PHASE1)	2.851	FM	P	RESURFACING	2010	0.0	NA		\$1,452,386 \$363,097 \$0	\$1,815,483
	100053047	RESURFACE & 2' WIDENING ON SR-21 (US-231) FROM END OF 4-LANE NORTH OF WALLSBORO TO COOSA COUNTY LINE (FY2010 PHASE II)	11.89	FM	P	WIDENING & RESURFACING (RDWY)	2010	0.0	NA		\$2,016,000 \$504,000 \$0	\$2,520,000

## 2.5 Table 3 National Highway System Projects

Project Family ID	Project Number (FANBR)	Project Description	Project Length (miles)	SCP	STS	Project Type	FY	Map ID	Conformity Year	Requirement	Federal State Other	Estimated Total Cost
30808	100052731	ROADWAY IMPROVEMENTS TO PORTION OF SR-53	4.334	PE	P	GRADE, DRAIN, BASE AND PAVE	2010	0.0	NA		\$166,400	
	NH - 0053 ( )	(US-231 NB) FROM NEAR CR-127 (ATHEY RD) TO 0.5 MILE NORTH CR-128 (CANTY RD)								\$41,600	\$208,000	
										\$0		
	100052732		4.334	CN	P	GRADE, DRAIN, BASE AND PAVE	2011	0.0	NA		\$3,744,000	
NH - 0053 ( )		\$936,000								\$4,680,000		
											\$0	
Total By Sponsor							Federal	\$41,563,844	All Funds			\$51,954,805



## 2.6 Table 4 Appalachian Highway System Projects

Project Family ID	Project Number (FANBR)	Project Description	Project Length (miles)	SCP STS	Project Type	FY	Map ID	Conformity Year	Requirement	Federal State Other	Estimated Total Cost
-------------------------	------------------------------	---------------------	------------------------------	---------	--------------	----	--------	--------------------	-------------	---------------------------	----------------------------

Sponsor :

No Records Found

Total By Sponsor

Federal

\$0

All Funds

\$0

## 2.7 Table 5 Interstate System Projects

Project Family ID	Project Number (FANBR)	Project Description	Project Length (miles)	SCP	STS	Project Type	FY	Map ID	Conformity Year	Requirement	Federal State Other	Estimated Total Cost
Sponsor : ALDOT												
30699	100052591	I-65 PAVEMENT REHAB FROM NORTH END ALABAMA RIVER BRIDGE TO RELIEF BRIDGE 1.8 MILES SOUTH SR-6 US-82 - BIN 10677)	4.645	CN	P	PAVEMENT REHABILITATION	2010	0.0	NA		\$6,750,000	
	IM - I065 ( 392 )										\$750,000	\$7,500,000
											\$0	
30700	100052593	I-85 PAVEMENT REHAB FROM SOUTH SR-8 (US-80) TO MACON COUNTY LINE	8.378	CN	P	PAVEMENT REHABILITATION	2010	0.0	NA		\$8,550,000	
	IM - I085 ( 330 )										\$950,000	\$9,500,000
											\$0	
31041	100053169	BRIDGE RAIL RETROFIT ON I-85 FROM I-65 TO ANN ST.,INCLUDES I-85/I-65 INTERCHANGE BRIDGES & BRIDGES ON I-85 @ ROSA PARKS AVE, HOLCOMBE ST, MCDONOUGH ST, HULL ST, DECATUR ST, UNION ST, JACKSON ST, MULBERRY ST, CHESTNUT ST, RYAN ST, AND ANN ST.	0.0	PE	P	BRIDGE REHABILITATION	2011	0.0	NA		\$93,600	
	IM - I085 ( )										\$10,400	\$104,000
											\$0	
Total By Sponsor						Federal	\$15,393,600		All Funds		\$17,104,000	

## 2.8 Table 6 Bridge Projects (State and Federal)

Project Family ID	Project Number (FANBR)	Project Description	Project Length (miles)	SCP	STS	Project Type	FY	Map ID	Conformity Year	Conformity Requirement	Federal State Other	Estimated Total Cost
Sponsor : ALDOT												
900	100045612	ADDITIONAL LANES SR-9 (US-231) FROM CR-8 (REDLAND RD) TO NEAR CR-200 (BLUE RIDGE RD) & WETUMPKA WELCOME CENTER	0.9	CN	P	GRADE, DRAIN, BASE, PAVE & BRG	2010	0.0	NA	NA	\$1,395,264	\$1,744,080
	NHF-BRF - 0009 ( 532 )										\$348,816	
											\$0	
22308	100040020	NEW BRIDGE FOR 4 LANING OF SR-6 (US-82) AT AUTAUGA CK BIN #005803 (MP 140.678) AND ICG RR BIN #5804 (MP 142.016)	0.0	UT	P	UTILITY ADJUSTMENT	2010	28.0	NA	NA	\$67,492	\$84,365
	BR - 0006 ( 506 )										\$16,873	
											\$0	
25128	100044831	REPLACE BRIDGE, BIN 002736, SR-206 OVER AUTAUGA CREEK. (SUFF = 7.0, STATUS = SD)	0.5	CN	P	BRIDGES AND APPROACHES	2010	29.0	NA		\$2,789,663	\$3,487,078
	BR - 0206 ( 502 )										\$697,416	
											\$0	
22485	100040324	WIDENING BRIDGES AT PINTLALA CREEK RELIEF (BIN # 008582 & 008583) MP-159.913, & (BIN # 008584 & 008585) MP-160.140, PINTLALA CREEK (BIN # 008586 & 008587) MP-160.372 AND PINTLALA RELIEF (BIN # 008588 & 008589) MP-160.678 ON I-65	1.6	PE	P	BRIDGE WIDENING	2011	30.0	NA	NA	\$750,581	\$938,227
	BR - I065 ( 324 )										\$187,645	
											\$0	
22488	100040331	WIDENING BRIDGE AT MILLER CK (BIN # 014737 & 014738) MP-15.061, LINE CK RELIEF (BIN # 007566 & 007567) MP-18.391, LINE CK (BIN # 007554 & 007555) MP-18.628 AND LINE CK RELIEF (BIN # 007556 & 007557) MP-18.878 ON I-85	1.7	PE	P	BRIDGE WIDENING	2010	32.0	NA	NA	\$395,952	\$494,940
	BRF - I085 ( 315 )										\$98,988	
											\$0	
28867	100050028	REPLACE BRIDGE, BIN 002922, SR-8 (US-80) OVER PINTLALA CREEK. (SUFF=51.8, STATUS=FO)	0.4	PE	P	BRIDGE REPLACEMENT	2010	33.0	NA		\$179,978	\$224,973
	BR - 0008 ( )										\$44,995	
											\$0	
Total By Sponsor							Federal	\$5,578,930	All Funds		\$6,973,663	

## 2.9 Table 7 State Funded Projects

Project Family ID	Project Number (FANBR)	Project Description	Project Length (miles)	SCP	STS	Project Type	FY	Map ID	Conformity Year	Requirement	Federal State Other	Estimated Total Cost
Sponsor :   ALDOT												
25634	100045571	INTERCHANGE JUSTIFICATION STUDY, MODIFICATION OF INTERCHANGE ON I-65 AT CLAY / HERRON STREET	0.01	PE	P	UNCLASSIFIED	2010	75.0	NA	NA	\$0 \$54,080 \$0	\$54,080
30738	100052653	INTERSECTION IMPROVEMENT ON SR-110 AT CR-83 (WALLAHATCHIE ROAD)	0.5	CN	P	GRADE, DRAIN, BASE AND PAVE	2010	0.0	NA		\$0 \$1,560,000 \$0	\$1,560,000
31416	100053597	IMPROVE INTERSECTION OF I-85 SOUTHBOUND AT SR-8 (US-80. EXIT 11, RAMP) AT MITYLENE	0.01	CN	P	INTERSECTION IMPROVEMENTS	2010	0.0	NA		\$0 \$104,000 \$0	\$104,000
31428	100053608	IIMPROVE INTERSECTION OF I-85 SOUTHBOUND AT SR-8 (US-80. EXIT 11, RAMP) AT MITYLENE	0.01	PE	P	INTERSECTION IMPROVEMENTS	2010	0.0	NA		\$0 \$10,400 \$0	\$10,400
Total By Sponsor							Federal		\$0		All Funds \$1,728,480	
Sponsor :   NEW PROJECT												
32096	100054479	WIDEN & RESURFACE OUTSIDE TURN LANES TO ACCOMODATE THREE SB TRAVEL LANES SR-271 FROM CR-137 (VAUGHN RD) TO INTERSECTION OF BARNETT RD	0.827	PE	P	WIDENING & RESURFACING (RDWY)	2010	0.0	NA	EXEMPT	\$0 \$25,000 \$0	\$25,000
	100054480		0.827	CN	P	WIDENING & RESURFACING (RDWY)	2010	0.0	NA	EXEMPT	\$0 \$500,000 \$0	\$500,000
Total By Sponsor							Federal		\$0		All Funds \$525,000	

## 2.10 Table 8 Enhancement Projects

Project Family ID	Project Number (FANBR)	Project Description	Project Length (miles)	SCP	STS	Project Type	FY	Map ID	Conformity Year	Requirement	Federal State Other	Estimated Total Cost
Sponsor : ALABAMA STATE UNIVERSITY												
30409	100052186	LANDSCAPING ALONG CARTER HILL ROAD, UNION STREET & ALONG PROPERTY ADJACENT TO I-85 AROUND ALABAMA STATE UNIVERSITY. THIS PROJECT IS LOCATED ALONG CARTER HILL RD., UNION ST. & I-85 IN MONTGOMERY,AL.	0.0	CN	P	LANDSCAPING	2011	136.0	NA		\$230,000	\$287,500
	STPTE - TE08 ( 936 )										\$0	
											\$57,500	
Total By Sponsor												
Federal							\$230,000		All Funds		\$287,500	
Sponsor : ALDOT												
29100	100050354	BRIDGE WIDENING AND CULVERT REPLACEMENT OVER CLOVERLAND DITCH ON ROSA PARKS AVENUE, CSX RAILROAD AND SOUTH COURT STREET	0.0	RW	P	BRIDGE WIDENING	2011	35.0	NA		\$300,000	\$300,000
	DE - AL65 ( )										\$0	
											\$0	
	100045115		0.0	CN	P	BRIDGE WIDENING	2011	35.0	NA	NA	\$600,000	\$600,000
	DE - AL65 ( )										\$0	
											\$0	
Total By Sponsor												
Federal							\$900,000		All Funds		\$900,000	
Sponsor : City of Montgomery												
29317	100050660	MT. MEIGS ROAD SIDEWALKS AND STREETScape IN THE CITY OF MONTGOMERY. THIS PROJECT IS LOCATED ON MT MEIGS ROAD FROM ANN STREET TO HOPPER STREET IN THE CITY OF MONTGOMERY.	0.0	CN	P	STREETScape	2010	37.0	NA		\$371,014	\$463,768
	STPOA-STPTE - TE07 ( 903 )										\$0	
											\$92,754	
Total By Sponsor												
Federal							\$371,014		All Funds		\$463,768	
Sponsor : Town of Pike Road												
31692	100050659	PIKE RD. MULTI-PURPOSE NATURAL TRAIL IN THE TOWN OF PIKE ROAD. THIS PROJECT IS LOCATED ON MERIWETHER, PIKE AND OLD PIKE ROADS.	0.0	CN	P	UNCLASSIFIED	2010	36.0	NA		\$608,698	\$760,873
	STPTE - TE07 ( 918 )										\$0	
											\$152,175	
Total By Sponsor												
Federal							\$608,698		All Funds		\$760,873	

## 2.11 Table 9 Transit Projects

Project Family ID	Project Number (FANBR)	Project Description	Project Length (miles)	SCP	STS	Project Type	FY	Map ID	Conformity Year Requirement	Federal State Other	Estimated Total Cost
Sponsor : Autauga County Commission											
29260	100050579	SECTION 5311 AUTAUGA COUNTY TRANSIT CAPITAL BUSES FOR FY 2008 (3 MV)	0.0	TR	P	UNCLASSIFIED	2010	95.0	NA	\$99,998 \$0 \$25,000	\$124,998
29280	100050599	SECTION 5311 AUTAUGA COUNTY TRANSIT CAPITAL BUS FOR FY 2009 (3 MV)	0.0	TR	P	UNCLASSIFIED	2010	95.0	NA	\$99,113 \$0 \$24,778	\$123,891
28472	100049551	SECTION 5311 AUTAUGA COUNTY TRANSIT OPERATING ASSISTANCE FOR FY 2010	0.0	TR	P	UNCLASSIFIED	2010	84.0	NA	\$133,607 \$0 \$0	\$267,214
28473	100049552	SECTION 5311 AUTAUGA COUNTY TRANSIT ADMINISTRATION ASSISTANCE FOR FY 2010	0.0	TR	P	UNCLASSIFIED	2010	84.0	NA	\$26,088 \$0 \$0	\$52,175
28475	100049554	SECTION 5311 AUTAUGA COUNTY TRANSIT OPERATING ASSISTANCE FOR FY 2011	0.0	TR	P	UNCLASSIFIED	2011	84.0	NA	\$136,280 \$0 \$0	\$272,560
28476	100049555	SECTION 5311 AUTAUGA COUNTY TRANSIT ADMINISTRATION ASSISTANCE FOR FY 2011	0.0	TR	P	UNCLASSIFIED	2011	84.0	NA	\$42,575 \$0 \$0	\$53,219
31215	100053384	SECTION 5311 AUTAUGA COUNTY STIMULUS CAPITAL BUS ROLLING STOCK	0.0	TR	P	UNCLASSIFIED	2010	0.0	NA	\$175,561 \$0 \$0	\$175,561
31216	100053385	SECTION 5311 AUTAUGA COUNTY STIMULUS CAPITAL BUS SUPPORT FACILITIES/EQUIP	0.0	TR	P	UNCLASSIFIED	2010	0.0	NA	\$53,517 \$0 \$0	\$53,517

## 2.4.9 Transit Projects

Project Family ID	Project Number (FANBR)	Project Description	Project Length (miles)	SCP	STS	Project Type	FY	Map ID	Conformity Year	Requirement	Federal State Other	Estimated Total Cost
31217	100053386	SECTION 5311 AUTAUGA COUNTY STIMULUS CAPITAL	0.0	TR	P	UNCLASSIFIED	2010	0.0	NA		\$7,078	
	STMRPTOC - 5311 ( )	BUS SIGNAL/COMMUNICATION									\$0	\$7,078
											\$0	
Total By Sponsor							Federal	\$773,817		All Funds	\$1,130,213	
Sponsor : City of Montgomery												
26946	100047279										\$1,728,000	
	FTA9C - TR08 ( )	MONTGOMERY BUSES FOR FY 08	0.0	TR	P	UNCLASSIFIED	2010	90.0	NA		\$0	\$2,160,000
											\$432,000	
26948	100047281	MONTGOMERY TRANSIT PREVENTIVE MAINTENANCE	0.0	TR	P	UNCLASSIFIED	2010	91.0	NA		\$687,621	
	FTA9C - TR07 ( )	FOR FY 07									\$0	\$859,526
											\$171,905	
26949	100047282	MONTGOMERY TRANSIT PREVENTIVE MAINTENANCE	0.0	TR	P	UNCLASSIFIED	2010	91.0	NA		\$707,079	
	FTA9C - TR08 ( )	FOR FY 08									\$0	\$883,849
											\$176,770	
26952	100047285	MONTGOMERY TRANSIT ENHANCEMENTS FOR FY 08	0.0	TR	P	UNCLASSIFIED	2010	92.0	NA		\$79,200	
	FTA9C - TR08 ( )										\$0	\$99,000
											\$19,800	
26955	100047288	MONTGOMERY TRANSIT BUS SUPPORT EQUIPMENT	0.0	TR	P	UNCLASSIFIED	2010	93.0	NA		\$215,040	
	FTA9C - TR08 ( )	FOR FY 08									\$0	\$268,800
											\$53,760	
26959	100047292	MONTGOMERY TRANSIT OPERATING FOR FY 08	0.0	TR	P	UNCLASSIFIED	2010	93.0	NA		\$3,022,491	
	FTA9 - TR08 ( )										\$0	\$6,044,982
											\$3,022,491	
26961	100047294	SECTION 5309 MONTGOMERY TRANSIT BUSES FOR FY 07	0.0	TR	P	UNCLASSIFIED	2010	90.0	NA		\$1,728,000	
	FTA3C - TR07 ( )										\$0	\$2,160,000
											\$432,000	

## 2.4.9 Transit Projects

Project Family ID	Project Number (FANBR)	Project Description	Project Length (miles)	SCP	STS	Project Type	FY	Map ID	Conformity Year	Requirement	Federal State Other	Estimated Total Cost
28438	100049515	MONTGOMERY TRANSIT OPERATING FOR FY 2009	0.0	TR	P	UNCLASSIFIED	2010	95.0	NA		\$3,324,740	
	FTA9 - TR09 ( )										\$0	\$6,649,480
											\$3,324,740	
28439	100049516	MONTGOMERY TRANSIT OPERATING FOR FY 2010	0.0	TR	P	UNCLASSIFIED	2010	95.0	NA		\$3,657,214	
	FTA9 - TR10 ( )										\$0	\$7,314,428
											\$3,657,214	
28440	100049517	MONTGOMERY TRANSIT OPERATING FOR FY 2011	0.0	TR	P	UNCLASSIFIED	2011	95.0	NA		\$4,022,936	
	FTA9 - TR11 ( )										\$0	\$8,045,871
											\$4,022,936	
28442	100049519	MONTGOMERY TRANSIT BUSES FOR FY 2009	0.0	TR	P	UNCLASSIFIED	2010	96.0	NA		\$1,900,800	
	FTA9C - TR09 ( )										\$0	\$2,376,000
											\$475,200	
28443	100049520	MONTGOMERY TRANSIT BUSES FOR FY 2010	0.0	TR	P	UNCLASSIFIED	2010	96.0	NA		\$2,090,880	
	FTA9C - TR10 ( )										\$0	\$2,613,600
											\$522,720	
28444	100049521	MONTGOMERY TRANSIT BUSES FOR FY 2011	0.0	TR	P	UNCLASSIFIED	2011	96.0	NA		\$2,299,968	
	FTA9C - TR11 ( )										\$0	\$2,874,960
											\$574,992	
28445	100049522	MONTGOMERY TRANSIT SUPPORT FACILITIES & EQUIPMENT FOR FY 2009	0.0	TR	P	UNCLASSIFIED	2010	97.0	NA		\$236,544	
	FTA9C - TR09 ( )										\$0	\$295,680
											\$59,136	
28446	100049523	MONTGOMERY TRANSIT SUPPORT FACILITIES & EQUIPMENT FOR FY 2010	0.0	TR	P	UNCLASSIFIED	2010	97.0	NA		\$260,198	
	FTA9C - TR10 ( )										\$0	\$325,248
											\$65,050	
28447	100049524	MONTGOMERY TRANSIT SUPPORT FACILITIES & EQUIPMENT FOR FY 2011	0.0	TR	P	UNCLASSIFIED	2011	97.0	NA		\$286,218	
	FTA9C - TR11 ( )										\$0	\$357,773
											\$71,555	



## 2.4.9 Transit Projects

Project Family ID	Project Number (FANBR)	Project Description	Project Length (miles)	SCP	STS	Project Type	FY	Map ID	Conformity Year	Requirement	Federal State Other	Estimated Total Cost
28448	100049525	MONTGOMEERY TRANSIT PREVENTIVE MAINTENANCE FOR FY 2009	0.0	TR	P	UNCLASSIFIED	2010	98.0	NA		\$777,787 \$0 \$194,447	\$972,234
28449	100049526	MONTGOMERY TRANSIT PREVENTIVE MAINTENANCE FOR FY 2010	0.0	TR	P	UNCLASSIFIED	2010	98.0	NA		\$855,566 \$0 \$213,892	\$1,069,458
28450	100049527	MONTGOMERY TRANSIT PREVENTIVE MAINTENANCE FOR FY 2011	0.0	TR	P	UNCLASSIFIED	2011	98.0	NA		\$941,123 \$0 \$235,281	\$1,176,404
28451	100049528	MONTGOMERY TRANSIT ENHANCEMENT FOR FY 2009	0.0	TR	P	UNCLASSIFIED	2010	99.0	NA		\$87,120 \$0 \$21,780	\$108,900
28452	100049529	MONTGOMERY TRANSIT ENHANCEMENT FOR FY 2010	0.0	TR	P	UNCLASSIFIED	2010	99.0	NA		\$95,832 \$0 \$23,958	\$119,790
28453	100049530	MONTGOMERY TRANSIT ENHANCEMENT FOR FY 2011	0.0	TR	P	UNCLASSIFIED	2011	99.0	NA		\$105,415 \$0 \$26,354	\$131,769
28939	100050123	CITY OF MONTGOMERY, AL - ITS ACQUISITION AND IMPLEMENTATION FY 07	0.0	TR	P	UNCLASSIFIED	2010	100.0	NA		\$952,000 \$0 \$238,000	\$1,190,000
28940	100050124	CITY OF MONTGOMERY, AL - ACQUISITION AND IMPLEMENTATION FY 08	0.0	TR	P	UNCLASSIFIED	2010	100.0	NA		\$1,035,000 \$0 \$258,750	\$1,293,750
28941	100050125	CITY OF MONTGOMERY, AL - ACQUISITION AND IMPLEMENTATION FY 09	0.0	TR	P	UNCLASSIFIED	2010	100.0	NA		\$1,097,000 \$0 \$274,250	\$1,371,250

## 2.4.9 Transit Projects

Project Family ID	Project Number (FANBR)	Project Description	Project Length (miles)	SCP	STS	Project Type	FY	Map ID	Conformity Year	Requirement	Federal State Other	Estimated Total Cost
31412	100053592	SECTION 5307 CITY OF MONTGOMERY STIMULUS	0.0	TR	P	UNCLASSIFIED	2010	0.0	NA		\$2,000,000	
	STMFTA9C - 5307 (	) TRANSIT BUS ROLLING STOCK									\$0	\$2,000,000
											\$0	
31413	100053593	SECTION 5307 CITY OF MONTGOMERY STIMULUS	0.0	TR	P	UNCLASSIFIED	2010	0.0	NA		\$1,151,918	
	STMFTA9C - 5307 (	) TRANSIT SUPPORT FACILITIES & EQUIPMENT									\$0	\$1,151,918
											\$0	
31414	100053594	SECTION 5307 CITY OF MONTGOMERY STIMULUS	0.0	TR	P	UNCLASSIFIED	2010	0.0	NA		\$75,000	
	STMFTA9C - 5307 (	) TRANSIT BUS SIGNAL AND COMMUNICATION									\$0	\$75,000
											\$0	
31415	100053595	SECTION 5307 CITY OF MONTGOMERY STIMULUS	0.0	TR	P	UNCLASSIFIED	2010	0.0	NA		\$300,000	
	STMFTA9C - 5307 (	) TRANSIT BUS OTHER CAPITAL ITEMS									\$0	\$300,000
											\$0	
Total By Sponsor							Federal	\$35,720,690	All Funds		\$54,289,670	
Sponsor :    Montgomery Regional Airport												
28942	100050126	CITY OF MONTGOMERY, AL - MONTGOMERY AIRPORT	0.0	TR	P	UNCLASSIFIED	2010	94.0	NA		\$952,000	
	FTA3C - TR07 (	) INTERMODAL CENTER FY07									\$0	\$1,190,000
											\$238,000	
28943	100050127	CITY OF MONTGOMERY, AL - MONTGOMERY AIRPORT	0.0	TR	P	UNCLASSIFIED	2010	94.0	NA		\$1,035,000	
	FTA3C - TR08 (	) INTERMODAL CENTER FY08									\$0	\$1,293,750
											\$258,750	
28944	100050128	CITY OF MONTGOMERY, AL - MONTGOMERY AIRPORT	0.0	TR	P	UNCLASSIFIED	2010	94.0	NA		\$1,097,000	
	FTA3C - TR09 (	) INTERMODAL CENTER FY09									\$0	\$1,371,250
											\$274,250	
Total By Sponsor							Federal	\$3,084,000	All Funds		\$3,855,000	

## 2.4.9 Transit Projects

Project Family ID	Project Number (FANBR)	Project Description	Project Length (miles)	SCP	STS	Project Type	FY	Map ID	Conformity Year	Requirement	Federal State Other	Estimated Total Cost
Sponsor : NEW PROJECT												
32328	100054813	CITY OF MONTGOMERY-MATS TRANSIT CAPITAL ARRA	0.0	TR	P	UNCLASSIFIED	2010	0.0	NA	EXEMPT	\$2,675,000	
	CTGR - CT10 (	) TIGER (5 HYBRID ELECTRIC BUSES)									\$0	\$2,675,000
											\$0	
Total By Sponsor						Federal	\$2,675,000		All Funds		\$2,675,000	

## 2.12 Table 10 System Maintenance Projects

Project Family ID	Project Number (FANBR)	Project Description	Project Length (miles)	SCP	STS	Project Type	FY	Map ID	Conformity Year	Requirement	Federal State Other	Estimated Total Cost
Sponsor : ALDOT												
30329	100053345	RESURFACING SR-143 FROM NORTH CR-2 (ALABAMA RIVER PKWY) TO CR-23 (COOSADA RD)	3.418	MC	P	RESURFACING	2010	0.0	NA		\$0	\$878,597
99-306-261-143-901	-	( )									\$0	
	100053346	RESURFACING SR-143 FROM I-65 TO ELMORE COUNTY LINE	1.022	MC	P	RESURFACING	2010	0.0	NA		\$0	\$452,400
99-306-513-143-901	-	( )									\$0	
Total By Sponsor							Federal		\$0		All Funds	
											\$1,330,997	

## 2.13 Table 11 Safety Projects

Project Family ID	Project Number (FANBR)	Project Description	Project Length (miles)	SCP	STS	Project Type	FY	Map ID	Conformity Year	Requirement	Federal State Other	Estimated Total Cost
Sponsor : ALDOT												
22876	100047258	RAILROAD CROSSING IMPROVEMENTS ON CR-54 (OLD SELMA RD) @ CSXT RAILROAD (DOT# 831 347 D)	0.0	CN	P	RR CROSSING IMPROVEMENTS	2010	66.0	NA		\$126,547	\$140,608
	STPRR - 7796 ( )										\$0	\$0
	100047259	RAILROAD CROSSING IMPROVEMENTS ON FORBES DRIVE @ NORFOLK SOUTHERN RAILROAD (DOT# 726-379 X), NORTH OF SR-152 & SOUTH OF ALABAMA RIVER PKWY	0.0	CN	P	RR CROSSING IMPROVEMENTS	2010	67.0	NA		\$126,547	\$140,608
	STPRR - 7700 ( )										\$0	\$0
27733	100048458	CR-54 (OLD SELMA ROAD) REF# 1167(X-R) RAILROAD CROSSING IMPROVEMENTS @ CSXT RAILROAD (DOT# 306-574N), NEAR SR-3 (US-31)	0.0	CN	P	RR CROSSING IMPROVEMENTS	2010	68.0	NA		\$140,608	\$140,608
	STPRH - 7796 ( 600 )										\$0	\$0
30329	100051873	RESURFACE SR-3 (US-31) FROM CSXT RR BRIDGE TO SOUTH END OF ALABAMA RIVER BRIDGE	9.81	FM	P	WIDENING & RESURFACING (RDWY)	2010	132.0	NA		\$539,245	\$599,161
	NH-HSIP - 0003 ( 543 )										\$59,916	\$0
	100052872	RESURFACE SR-8 (US-80) FROM CR-43 (BELL ROAD) TO I-85 (FY2010 PHASE1)	4.74	FM	P	WIDENING & RESURFACING (RDWY)	2010	0.0	NA		\$315,000	\$350,000
	STPAA-HSIP - 0008 ( 556 )										\$35,000	\$0
22882	100007043	REF#1113 (VIII-H) ON CR-23 (COOSADA RD) @ CR-153 (COOSADA PKWY) INSTALL FLASING BEACON, STOP BARS AND REALIGN STOP SIGNS. HAZARD ELIMINATION PROGRAM REF. #1113 (VIII-H).	0.0	CN	P	SIGNALS, MARKINGS, & SIGNS	2010	70.0	NA	NA	\$4,680	\$5,200
	STPHS - 000S ( )										\$0	\$520
	100007109	>REF#1118(VIII) SR-14 AT SR-143 SIGNALIZATION UPGRADE HAZARD ELIMINATION PROGRAM REF. #1118 (VIII-H) .	0.195	CN	P	SIGNALIZATION	2010	64.0	NA	NA	\$8,605	\$9,561
	STPHS - 281 ( )										\$956	\$0
30329	100051864	RESURFACE SR-9 (US-231) FROM TALLAPOOSA RIVER BRIDGE TO SR-21	8.522	FM	P	WIDENING & RESURFACING (RDWY)	2010	133.0	NA		\$277,187	\$307,986
	NH-HSIP - 0009 ( 527 )										\$30,799	\$0
	100052164	RESURFACE AND 2' SAFETY WIDENING ON SR-53 (US-231) FROM CR-89 @ PINE LEVEL TO DRY CREEK BRIDGE	4.64	FM	P	WIDENING & RESURFACING (RDWY)	2010	134.0	NA		\$365,461	\$406,068
	NH-HSIP - 0053 ( 536 )										\$40,607	\$0

## 2.13 Table 11 Safety Projects

Project Family ID	Project Number (FANBR)	Project Description	Project Length (miles)	SCP	STS	Project Type	FY	Map ID	Conformity Year	Requirement	Federal State Other	Estimated Total Cost
	100053047	RESURFACE & 2' WIDENING ON SR-21 (US-231) FROM									\$252,000	
NH-HSIP -	0021 ( 530 )	END OF 4-LANE NORTH OF WALLSBORO TO COOSA	11.89	FM	P	WIDENING & RESURFACING (RDWY)	2010	0.0	NA		\$28,000	\$280,000
		COUNTY LINE (FY2010 PHASE II)									\$0	
Total By Sponsor						Federal	\$2,155,881	All Funds			\$2,379,800	

2.14 Table 12 Other Federal and State Aid Projects

Project Family ID	Project Number (FANBR)	Project Description	Project Length (miles)	SCP STS	Project Type	FY	Map ID	Conformity Year	Requirement	Federal State Other	Estimated Total Cost
-------------------------	------------------------------	---------------------	------------------------------	---------	--------------	----	--------	--------------------	-------------	---------------------------	----------------------------

Sponsor :

No Records Found

Total By Sponsor						Federal		\$0	All Funds		\$0
------------------	--	--	--	--	--	---------	--	-----	-----------	--	-----

2.15 Table 13 Congestion Mitigation and Air Quality Projects

Project Family ID	Project Number (FANBR)	Project Description	Project Length (miles)	SCP STS	Project Type	FY	Map ID	Conformity Year	Requirement	Federal State Other	Estimated Total Cost
Sponsor :											
No Records Found											
Total By Sponsor					Federal		\$0		All Funds		\$0



## 2.16 Table 14 High Priority and Congressional Earmark Projects

Project Family ID	Project Number (FANBR)	Project Description	Project Length (miles)	SCP	STS	Project Type	FY	Map ID	Conformity Year	Conformity Requirement	Federal State Other	Estimated Total Cost
Sponsor : ALDOT												
20743	100036855	MONTGOMERY INTEGRATION PROJECT VARIOUS	0.0	CN	P	UNCLASSIFIED	2010	39.0	NA	NA	\$1,712,107	
	ITS - 9901 ( 001 )	INTELLIGENT TRANSPORTATION SYSTEM ELEMENTS									\$428,027	\$2,140,134
		INCLUDING VEHICLE DETECTION, FREEWAY										
		MANAGEMENT, SOFTWARE INTEGRATION, MESSAGE										
		SIGNS, FIBER OPTIC CABLE AND TMC EQUIPMENT.										
Total By Sponsor						Federal	\$1,712,107		All Funds		\$2,140,134	

# Authorized Projects

Program	Table No.	FANBR	Project Number	Scope	Project Description	Project Length (miles)	Start Date	Type Of Work	Estimated Total Cost
Sponsor : ALDOT									
EBSPL	2	IM-EBF - I065 ( 386 )	100049484	CN	I-65 ADD LANES FROM NORTH OF CR-233 (FAIRVIEW AVENUE) OVERPASS TO ALABAMA RIVER BRIDGE NORTH END, WORK INCLUDES CONCRETE PAVEMENT REHABILITATION, EXISTING PAVEMENT OVERLAY, AND BRIDGE WIDENING.	1.36	2/27/09	ADDITIONAL ROADWAY LANES	\$7,887,403
IM04L	5	IM-EBF - I065 ( 386 )	100049484	CN		1.36	2/27/09	ADDITIONAL ROADWAY LANES	\$9,640,159
NHSP	3	NH - 0009 ( 533 )	100047095	PE	EXTEND SERVICE ROAD ALONG SR-9 (NORTHERN BLVD) FROM NEAR TODD RD TO NORTH OF INTERSECTION LAGOON PARK DR & PLANTATION WAY	0.763	7/1/09	GRADE, DRAIN, BASE AND PAVE	\$80,000
STRRL	11	RHPD - 7789 ( 600 )	100040196	CN	REF# 1092 (VIII-R) RR CROSSING IMPROVEMENTS - N COURT ST (LINK# 5508) @ CSXT RR , NORTH OF MONTGOMERY, NEAR NEW TOWN	0.0	7/15/09	RR CROSSING IMPROVEMENTS	\$232,934
STRRL	11	RHPD - 7789 ( 601 )	100040413	CN	REF#1045(VII-R) RR CROSSING IMPROVEMENTS NORTH COURT STREET @ CSXT RR IN MONTGOMERY	0.0	7/15/09	RR CROSSING IMPROVEMENTS	\$338,200
BROPL	6	BR - 0206 ( 502 )	100051395	UT	REPLACE BRIDGE, BIN 002736, SR-206 OVER AUTAUGA CREEK. (SUFF = 7.0, STATUS = SD)	0.5	8/1/09	UTILITY ADJUSTMENT	\$35,787
BRONL	6	BR - 0206 ( 502 )	100052654	RW		0.5	3/1/09	BRIDGE REPLACEMENT	\$57,756
STOAL	2	STPOA - 7777 ( 600 )	100046477*	CN	ADDITIONAL LANES ON BELL STREET (CR-235) FROM WASHINGTON FERRY RD TO CSXT RAILROAD BRIDGE	0.829	4/24/09	GRADE, DRAIN, BASE AND PAVE	\$8,655,644
STATE	7	ST-051-110-003 - ( )	100051826	PE	5-LANING SR-110 FROM INTERSECTION CR-137 (VAUGHN RD) @ CHANTILLY TO CR-85 (PIKE RD)	0.463	10/1/09	ADDITIONAL ROADWAY LANES	\$250,000

# Authorized Projects

Program	Table No.	FANBR	Project Number	Scope	Project Description	Project Length (miles)	Start Date	Type Of Work	Estimated Total Cost
NH04L	3	NH - 0006 ( 536 )	100051950	CN	GUARDRAIL RETROFIT ON SR-6 (US-82) SOUTH BYPASS RR BRIDGE, JENKINS CREEK, AND LITTLE CATOMA CREEK	0.0	4/24/09	GUARDRAIL	\$384,916
STOAL	2	STPOA - 7814 ( 601 )	100052026	CN	IMPROVEMENTS TO CR-29 (OLD FARM LANE) FROM SR-6 (US-82) TO PRATTVILLE CITY LIMITS PHASE I	0.442	9/25/09	GRADE, DRAIN, BASE AND PAVE	\$2,000,707
STOAL	2	STPOA - 7814 ( 602 )	100052055	PE	IMPROVEMENTS TO CR-29 (OLD FARM LANE) FROM NORTH OF CR-50 (ROCKY MOUNT RD) TO SR-14 (PHASE II)	0.58	2/1/09	GRADE, DRAIN, BASE AND PAVE	\$234,000
STAAC	2	STMAA - 0006 ( 538 )	100052886	FM	RESURFACE & 2' WIDENING ON SR-6 (US-82) FROM CR-40 TO SR-206 AND SR-206 FROM SR-6 TO SR-14 (FY2010 PHASE I)	12.0	6/26/09	WIDENING & RESURFACING (RDWY)	\$3,850,345
99603	10	99-306-513-006 - ( )	100053113	MC	RESURFACE SERVICE ROADS ALONG SR-6 (US-82) FROM CR-231 (NORMAN BRIDGE ROAD) TO CR-33 (NARROW LANE RD) ,FY2010 PHASE I	1.518	9/25/09	RESURFACING	\$566,572
99044	10	99-406-690-000 - ( )	100052583	MC	PAVEMENT RESURFACING ON SR-143 FROM NORTH OF I-65 TO CR-2 (ALABAMA RIVER PARKWAY)	2.37	3/15/09	RESURFACING	\$150,000
IM04L	5	IM - I065 ( 392 )	100052590	PE	I-65 PAVEMENT REHAB FROM NORTH END ALABAMA RIVER BRIDGE TO RELIEF BRIDGE 1.8 MILES SOUTH SR-6 US-82 - BIN 10677)	4.645	7/1/09	PAVEMENT REHABILITATION	\$375,000
IM04L	5	IM - I085 ( 330 )	100052592	PE	I-85 PAVEMENT REHAB FROM SOUTH SR-8 (US-80) TO MACON COUNTY LINE	8.378	7/1/09	PAVEMENT REHABILITATION	\$475,000
SOLB	12	LB-605-051-001 - ( )	100052612	LB	ADDITIONAL VIDEO EQUIP. INSTALLED IN THE TRAINING SECTION, 6TH DIVISION	0.0	11/7/08	ACQUIRING LAND FOR LAND AND BUILDING FUNDS ONLY	\$1,313
STATE	7	ST-051-008-006 - ( )	100052619	PE	SR-8 (US-80) GEOTECHNICAL INVESTIGATION OF BIN 015536, RAMP OVER SR-8 (US-80, WEST BOUND ON RAMP) FROM I-65 NORTH	0.0	8/1/09	BRIDGE MAINTENANCE	\$75,000

# Authorized Projects

Program	Table No.	FANBR	Project Number	Scope	Project Description	Project Length (miles)	Start Date	Type Of Work	Estimated Total Cost
STATE	7	ST-051-110-004	( ) 100052652	PE	INTERSECTION IMPROVEMENT ON SR-110 AT CR-83 (WALLAHATCHIE ROAD)	0.5	7/1/09	INTERSECTION IMPROVEMENTS	\$100,000
SOLB	12	LB-605-051-001	( ) 100052751*	LB	LAND AND BUILDING WORK TO PROVIDE COVERED SIDEWALK AWNINGS FOR THE SIXTH DIVISION TRAINING FACILITY (EQUIPMENT WAREHOUSE).	0.0	1/16/09	CONSTRUCT BUILDING LAND AND BUILDING FUNDS ONLY	\$7,500
NH98	3	NH - 0008	( 558 ) 100053332	PE	ADD LANE ON SR-8 (US-80,HURRICANE CONTRA FLOW WIDENING) WB ONLY FROM SR-3 (US-31) TO I-65, INCLUDING RAMP MODIFICATION AT SR-8, SR-3 & WB EXIT	0.766	8/1/09	ADDITIONAL ROADWAY LANES	\$50,000
SOLB	12	LB-001-051-001	( ) 100053756	LB	FENCING AROUND NEWLY AQUIRED NORTH MONTGOMERY PROPERTY LOCATED AT 1588 CONCRETE DR	0.0	5/15/09	UNCLASSIFIED	\$300,000
STATE	7	ST-026-143-003	( ) 100053843	PE	DRAINAGE IMPROVEMENTS ON SR-143 BETWEEN CR-116 (CHAPMAN DRIVE) AND CR-18 (BROWNS RD) IN MILLBROOK	0.27	8/1/09	DRAINAGE CORRECTION	\$25,000
ERD09	14	ER - 8910	( 912 ) 100053883	PE	EMERGENCY SLIDE REPAIR TO SEVERAL SITES MONTGOMERY COUNTY RELATED TO EVENT 014.	0.0	9/1/09	PRELIMINARY DESIGN PE	\$50,000
ERD09	14	ER - 8910	( 914 ) 100053884	PE	MONTGOMERY COUNTY EMERGENCY SCOUR REPAIR TO SEVERAL SITES RELATED TO EVENT 014.	0.0	9/1/09	PRELIMINARY DESIGN PE	\$25,000
STATO	7	ST-051-000-007	( ) 100053998*	CN	STATE FUNDS TO MATCH FEDERAL FUNDS FOR THE MONTGOMERY AIRPORT INTERMODAL CENTER IN THE CITY OF MONTGOMERY	0.0	8/15/09	UNCLASSIFIED	\$300,000
SOLB	12	LB-603-051-001	( ) 100054090	LB	INSTALL IRRIGATION SYSTEM AT THE SIXTH DIVISION EQUIPMENT OFFICE	0.0	7/31/09	LANDSCAPING	\$2,400

# Authorized Projects

Program	Table No.	FANBR	Project Number	Scope	Project Description	Project Length (miles)	Start Date	Type Of Work	Estimated Total Cost
STATE	7	ST-001-003-001 - ( )	100053348	CN	ADD TURN LANES SR-3 (US-31) @ NEW AUTAUGA COUNTY HIGH SCHOOL, 2.5 MILES NORTH PINE LEVEL	0.5	5/15/09	TURN LANES	\$300,000
STOAL	2	STPOAF - 0009 ( 504 )	100033069	CN	SR-9(US-231) FR CHARLES AVE(LINK#5006) TO KNIGHT ST(LINK#5016) CORRECT SAFETY PROBLEM PROJECT SPONSOR: CITY OF WETUMPKA	0.965	11/7/08	SAFETY IMPROVEMENTS	\$6,350,739
STRRL	11	RHPD - CN06 ( 903 )	100047087	CN	RAILROAD CROSSING IMPROVEMENTS ON CR-273 (ASHLEY RD) @ CSXT RAILROAD (DOT# 831-319A)	0.0	7/15/09	RR CROSSING IMPROVEMENTS	\$175,546
STRRL	11	RHPD - CN07 ( 921 )	100050366	CN	CR-65 (SPRAGUE-JUNCTION RD) REF# 1192(XI-R) RAILROAD IMPROVEMENTS @ CSX RAILROAD (DOT# 636-631K), EAST OF SR-9 IN SPRAGUE	0.0	8/15/09	RR CROSSING SIGNALS	\$194,362
STAAC	2	STMAA - CN09 ( 908 )	100051863	FM	RESURFACE SR-14 FROM SR-212 TO SR-9 AND RESURFACE SR-212 FROM SR-14 TO SR-111	3.459	5/29/09	RESURFACING	\$1,207,836
HSIP	11	STPOA-HSIP - 0008 ( 552 )	100051874	FM	RESURFACE AND 2' SAFETY WIDENING ON SR-8 (US-80) FROM LOWNDES COUNTY LINE TO WEST CITY LIMITS OF MONTGOMERY, JUST EAST OF CR-103	4.692	8/28/09	WIDENING & RESURFACING (RDWY)	\$1,497,356
STOAL	2	STPOA-HSIP - 0008 ( 552 )	100051874	FM		4.692	8/28/09	WIDENING & RESURFACING (RDWY)	\$3,869,512
STATE	7	ST-026-143-002 - ( )	100052956	CN	INTERSECTION IMPROVEMENTS @ SR-14 & SR-143 IN ELMORE TO INCLUDE WIDENING, RESURFACING AND SIGNALIZATION.	0.0	2/27/09	INTERSECTION IMPROVEMENTS	\$200,000
Total By Sponsor									\$49,945,989

# Authorized Projects

Program	Table No.	FANBR	Project Number	Scope	Project Description	Project Length (miles)	Start Date	Type Of Work	Estimated Total Cost	
Sponsor : Autauga County Commission										
ERD09	14	ER	- 8910 ( 919 )	100054075	CN	EMERGENCY REPAIR ON VARIOUS ROUTES IN AUTAUGA COUNTY.	0.0	10/15/09	SLIDE CORRECTION	\$120,665
ERH05	14	ER	- 8910 ( 919 )	100054075	CN		0.0	10/15/09	SLIDE CORRECTION	\$104,429
RPTO	9	RPTO	- TR09 ( )	100049548	TR	SECTION 5311 AUTAUGA COUNTY TRANSIT OPERATING ASSISTANCE FOR FY 2009	0.0	12/15/08	UNCLASSIFIED	\$204,828
RPTO	9	RPTO	- TR09 ( )	100049549	TR	SECTION 5311 AUTAUGA COUNTY TRANSIT ADMINISTRATION ASSISTANCE FOR FY 2009	0.0	12/15/08	UNCLASSIFIED	\$64,220
Total By Sponsor										\$494,142

Sponsor :    Autauga Western Elmore ARC												
UMTAC	9	UMTAC	- TR09	(	)	100052718	TR	SECTION 5310 AUTAUGA WESTERN ELMORE ARC VEHICLE PROCUREMENT 1MV 1CCB	0.0	1/20/09	UNCLASSIFIED	\$95,814
Total By Sponsor											\$95,814	

# Authorized Projects

Program	Table No.	FANBR	Project Number	Scope	Project Description	Project Length (miles)	Start Date	Type Of Work	Estimated Total Cost
<b>Sponsor :</b> City of Prattville									
MNST	1	STPOA - 7812 ( 600 )	100050961	PE	WIDE & RESURFACE CR-75 (MCQUEEN SMITH RD) FROM SR-3 (US-31 ,SOUTH MEMORIAL DR) TO CR-2 (COBBS FORD RD)	2.0	1/1/09	ADDITIONAL ROADWAY LANES	\$600,000
STOAL	2	STPOA - 7814 ( 601 )	100052501	RW	IMPROVEMENTS TO CR-29 (OLD FARM LANE) FROM SR-6 (US-82) TO PRATTVILLE CITY LIMITS - PHASE I	0.442	4/1/09	ADDITIONAL ROADWAY LANES	\$1,105,373

**Total By Sponsor**

**\$1,705,373**

<b>Sponsor :</b> City of Wetumpka									
MNST	1	STPOA - 0014 ( 513 )	100044250	CN	SR-14 (COOSA RIVER PARKWAY) WIDEN AND ADD TURN LANE FROM EAST END RELIEF BRIDGE (BIN#012980) TO WEST END COOSA RIVER BRIDGE (BIN#013276)	0.224	5/29/09	TURN LANES	\$683,498

**Total By Sponsor**

**\$683,498**

<b>Sponsor :</b> Elmore County Commission									
HSIPR	11	HRRR - 2623 ( 200 )	100052817	CN	PAVE SHOULDERS, PAV'T MARKERS, & EDGE STRIPE ON CR-59 FROM CR-4 TO CR-8 ECP 26-23-08	4.864	3/27/09	SAFETY IMPROVEMENTS	\$202,186
STNUL	2	STPNU - 2645 ( 200 )	100052822	CN	RESURFACE CR-116 FROM CR-59 TO CR-8 ECP 26-30-07	4.4	4/24/09	RESURFACING	\$643,605

# Authorized Projects

Program	Table No.	FANBR	Project Number	Scope	Project Description	Project Length (miles)	Start Date	Type Of Work	Estimated Total Cost
Total By Sponsor									\$845,791

**Sponsor :** Family Guidance Center of Alabama

UMTAC	9	UMTAC - TR09 ( )	100052703	TR	SECTION 5310 FAMILY GUIDANCE CTR OF ALA VEHICLE PROCUREMENT 1MV	0.0	1/18/09	UNCLASSIFIED	\$43,022
-------	---	------------------	-----------	----	---	-----	---------	--------------	----------

Total By Sponsor									\$43,022
------------------	--	--	--	--	--	--	--	--	----------

**Sponsor :** Montgomery Association for Retarded Citizens

UMTAC	9	UMTAC - TR09 ( )	100052680	TR	SECTION 5310 MONTGOMERY ARC VEHICLE PROCUREMENT 7CV, 4MV, 2CCB	0.0	1/17/09	UNCLASSIFIED	\$537,862
-------	---	------------------	-----------	----	--	-----	---------	--------------	-----------

Total By Sponsor									\$537,862
------------------	--	--	--	--	--	--	--	--	-----------

**Sponsor :** Montgomery Cancer Wellness Foundation

UMTAC	9	UMTAC - TR09 ( )	100052776	TR	SECTION 5310 TRANSIT MONTGOMERY CANCER WELLNESS PURCHASED TRANSPORTATION	0.0	4/1/09	UNCLASSIFIED	\$40,000
-------	---	------------------	-----------	----	--	-----	--------	--------------	----------



# Authorized Projects

Program	Table No.	FANBR	Project Number	Scope	Project Description	Project Length (miles)	Start Date	Type Of Work	Estimated Total Cost
Total By Sponsor									\$40,000

### **3.0 APPENDICIES**

## 3.1 Montgomery MPO TIP Fiscal Years 2008 Through 2011 - Financial Plan

These projects are included in the financially constrained STIP FY-2008.

	Remainder of 2007	2008	2009	2010	2011
<b>Appalachian Highway System Projects</b>					
Funds Available for Programming Statewide (Federal Funds Only)	N/A	\$29,130,115	\$29,130,115	\$29,130,115	\$29,130,115
Montgomery Area Estimated Cost of Planned Projects (Federal Funds Only)	\$0	\$0	\$0	\$0	\$0
Percentage Programmed in the Montgomery Area (Federal Funds Only)	N/A	0%	0%	0%	0%
<b>Bridge Projects (State and Federal)</b>					
Funds Available for Programming Statewide (Federal Funds Only)	N/A	\$98,579,762	\$98,579,562	\$98,579,762	\$98,579,762
Montgomery Area Estimated Cost of Planned Projects (Federal Funds Only)	\$0	\$0	\$0	\$4,828,349	\$750,581
Percentage Programmed in the Montgomery Area (Federal Funds Only)	N/A	0%	0%	5%	1%
<b>Congestion Mitigation and Air Quality Projects - Birmingham Area Only</b>					
Carryover From Previous Year (Federal Funds Only)	\$0	\$0	\$0	\$0	\$0
Apportionment (Federal Funds Only)	\$0	\$0	\$0	\$0	\$0
Funds Available for Programming (Federal Funds Only)	\$11,810,162	\$11,810,162	\$11,810,162	\$11,810,162	\$11,810,162
Estimated Cost of Planned Projects (Federal Funds Only)	\$0	\$0	\$0	\$0	\$0
Balance Forward (Federal Funds Only)	\$11,810,162	\$11,810,162	\$11,810,162	\$11,810,162	\$11,810,162
<b>Enhancement Projects</b>					
Projects in this category are funded through annual grant applications. Projects in this category will not be known until late each year.					
Funds Available for Programming Statewide (Federal Funds Only)	N/A	\$17,310,159	\$17,310,159	\$17,310,159	\$17,310,159
Montgomery Area Estimated Cost of Planned Projects (Federal Funds Only)	\$0	\$0	\$0	\$979,712	\$1,130,000
Percentage Programmed in the Montgomery Area (Federal Funds Only)	N/A	0%	0%	6%	7%
<b>High Priority and Congressional Earmark Projects</b>					
This group of projects usually results from congressional action in an annual appropriations bill, these projects and the amount available for programming annually is an unknown factor.					
Funds Available for Programming Statewide (Federal Funds Only)	N/A	\$71,284,731	\$71,284,731	\$71,284,731	\$71,284,731
Montgomery Area Estimated Cost of Planned Projects (Federal Funds Only)	\$0	\$0	\$0	\$1,712,107	\$0
<b>Interstate System Projects</b>					
Funds Available for Programming Statewide (Federal Funds Only)	N/A	\$123,693,254	\$123,693,254	\$123,693,254	\$123,693,254
Montgomery Area Estimated Cost of Planned Projects (Federal Funds Only)	\$0	\$0	\$0	\$15,300,000	\$93,600
Percentage Programmed in the Montgomery Area (Federal Funds Only)	N/A	0%	0%	12%	0%
<b>National Highway System Projects</b>					
Funds Available for Programming Statewide (Federal Funds Only)	N/A	\$140,100,057	\$140,100,057	\$140,100,057	\$140,100,057
Montgomery Area Estimated Cost of Planned Projects (Federal Funds Only)	\$0	\$0	\$0	\$13,680,275	\$7,013,558
Percentage Programmed in the Montgomery Area (Federal Funds Only)	N/A	0%	0%	10%	5%
<b>Other Federal and State Aid Projects</b>					
Funds Available for Programming Statewide (Federal Funds Only)	N/A	\$93,240,002	\$93,240,002	\$93,240,002	\$93,240,002
Montgomery Area Estimated Cost of Planned Projects (Federal Funds Only)	\$0	\$0	\$0	\$0	\$0
Percentage Programmed in the Montgomery Area (Federal Funds Only)	N/A	0%	0%	0%	0%

### 3.1 Montgomery MPO TIP Fiscal Years 2008 Through 2011 - Financial Plan

These projects are included in the financially constrained STIP FY-2008.

	Remainder of 2007	2008	2009	2010	2011
<b>Other Surface Transportation Program Projects</b>					
Funds Available for Programming Statewide (Federal Funds Only)	N/A	\$148,857,700	\$148,857,700	\$148,857,700	\$148,857,700
Montgomery Area Estimated Cost of Planned Projects (Federal Funds Only)	\$0	\$0	\$0	\$13,680,275	\$7,013,558
Percentage Programmed in the Montgomery Area (Federal Funds Only)	N/A	0%	0%	9%	5%
<b>Safety Projects</b>					
Funds Available for Programming Statewide (Federal Funds Only)	N/A	\$38,738,835	\$38,738,835	\$38,738,835	\$38,738,835
Montgomery Area Estimated Cost of Planned Projects (Federal Funds Only)	\$0	\$0	\$0	\$2,155,880	\$0
Percentage Programmed in the Montgomery Area (Federal Funds Only)	N/A	0%	0%	6%	0%
<b>State Funded Projects</b>					
State Funds Available for Programming Statewide (Total Funds)	N/A	\$25,500,000	\$25,500,000	\$25,500,000	\$25,500,000
Montgomery Area Estimated Cost of Planned Projects (Total Funds)	\$0	\$0	\$0	\$2,253,480	\$0
Percentage Programmed in the Montgomery Area (Total Funds)	N/A	0%	0%	9%	0%
<b>Surface Transportation Attributable Projects - Montgomery Area Only</b>					
Carryover From Previous Year (Federal Funds Only)	N/A	\$17,243,768	-\$623,088	\$9,038,103	\$2,896,788
Apportionment (Federal Funds Only)	N/A	\$4,209,551	\$10,687,989	\$3,864,990	\$3,864,990
Funds Available to the MPO for Programming (Federal Funds Only)	N/A	\$2,831,225	\$10,064,901	\$12,903,093	\$6,761,778
Estimated Cost of Planned Projects (Federal Funds Only)	N/A	\$3,454,313	\$1,026,798	\$1,006,305	\$3,981,425
Balance Forward (Federal Funds Only)	N/A	-\$623,088	\$9,038,103	\$2,896,788	\$2,780,353
<b>System Maintenance Projects</b>					
State Funds Available for Programming Statewide (Total Funds)	N/A	\$30,000,000	\$30,000,000	\$30,000,000	\$30,000,000
Montgomery Area Estimated Cost of Planned Projects (Total Funds)	\$0	\$0	\$0	\$1,330,997	\$0
Percentage Programmed in the Montgomery Area (Total Funds)	N/A	0%	0%	4%	0%
<b>Transit Projects</b>					
Funds Available for Programming Statewide (Federal Funds Only)	N/A	\$54,162,000	\$54,162,000	\$54,162,000	\$54,162,000
Montgomery Area Estimated Cost of Planned Projects (Federal Funds Only)	\$0	\$0	\$0	\$31,978,267	\$7,834,515
Percentage Programmed in the Montgomery Area (Federal Funds Only)	N/A	0%	0%	59%	14%

## URBAN AREA FUNDING AVAILABILITY REPORT

URBAN AREA	MONTGOMERY	FEDERAL FUNDING ONLY				
PROJECT NO	PROJECT DESCRIPTION	SCOPE	FEDERAL FUNDS	Start Date	Status	Authorized
100039971	PROVIDE COMMUNICATIONS TECHNOLOGY TO EXISTING TRAFFIC SIGNAL CONTROLLERS IN C	CN	\$240,000	03/15/2008	Authorized	2/12/2008
100047400	BRIDGE REPLACEMENT ON CR-29 (TITUS RD) AT WEOKA CREEK BIN# 005891, ECP 26-04-04	CN	\$1,550,786	04/25/2008	Authorized	2/29/2008
100047406	RESURFACING ON COMPANY STREET FROM GREEN STREET TO SR-9 (US-231), IN WETUMPKA	CN	\$175,540	11/02/2007	Authorized	10/5/2007
100050339	PURCHASE AND INSTALLATION OF CLOSED CIRCUIT TELEVISION (CCTV) CAMERAS AT VARIOL	PE	\$16,000	03/01/2008	Authorized	2/12/2008
100050964	RESURFACE CR-59 FROM PRATTVILLE CITY LIMITS TO CR-40(SITE 1) AND RESURFACE CR-59 F	CN	\$910,636	08/29/2008	Authorized	6/23/2008
100050965	RESURFACE CR-23 (EDGEWOOD ROAD) FROM CR-2 (COBBS FORD ROAD) TO SR-143 (MAIN ST.	CN	\$361,351	09/26/2008	Authorized	8/29/2008
100051382	WIDEN PERRY HILL ROAD AND RESURFACE FROM I-85 ON/OFF RAMPS TO HARRISON ROAD	RW	\$200,000	03/01/2008	Authorized	2/13/2008

## TOTALS FOR FISCAL YEAR 2008

Prior FY Carryover	\$17,243,768	Authorized Projects	\$3,454,313	Unobligated Balance	(\$623,088)
FY Apportionment	\$4,209,551	Planned Projects	\$0	Remaining Balance	(\$623,088)
FY Special Allocation	(\$18,622,094)	Total Project Funds	\$3,454,313		
Total Funds	\$2,831,225				

100044250	SR-14 (COOSA RIVER PARKWAY) WIDEN AND ADD TURN LANE FROM EAST END RELIEF BRIDGE	CN	\$546,798	05/29/2009	Authorized	4/30/2009
100050961	WIDEN & RESURFACE CR-75 (MCQUEEN SMITH RD) FROM SR-3 (US-31, S MEMORIAL DR) TO CF	PE	\$480,000	01/01/2009	Authorized	11/17/2008

## TOTALS FOR FISCAL YEAR 2009

Prior FY Carryover	(\$623,088)	Authorized Projects	\$1,026,798	Unobligated Balance	\$9,038,103
FY Apportionment	\$3,864,990	Planned Projects	\$0	Remaining Balance	\$9,038,103
FY Special Allocation	\$6,822,999	Total Project Funds	\$1,026,798		
Total Funds	\$10,064,901				

100040820	WIDEN PERRY HILL ROAD AND RESURFACE FROM I-85 ON/OFF RAMPS TO HARRISON ROAD	CN	\$2,334,135	02/26/2010	Authorized	1/28/2010
100046478	INTERSECTION IMPROVEMENTS CLAY ST. & HERRON ST. IN THE CITY OF MONTGOMERY	CN	\$781,125	09/24/2010	Planned	
100047407	RESURFACING VARIOUS STREETS IN THE CITY OF MONTGOMERY CENTRAL BUSINESS DISTRI	CN	\$2,156,798	02/26/2010	Authorized	1/29/2010
100050336	PURCHASE AND INSTALLATION OF CLOSED CIRCUIT TELEVISION (CCTV) CAMERAS AT VARIOL	CN	\$158,080	02/15/2010	Planned	
100050962	WIDEN & RESURFACE CR-75 (MCQUEEN SMITH RD) FROM SR-3 (US-31, S MEMORIAL DR) TO CF	UT	\$40,000	03/01/2010	Planned	
100050969	RESURFACE CR-40 (MERIWETHER ROAD) FROM SR-6 (US-231) TO CR-85 (PIKE ROAD)	CN	\$484,557	05/28/2010	Planned	
100050971	WIDEN & RESURFACE CR-17 (AIRPORT ROAD) FROM CR-23 (COOSADA ROAD) TO KENNEDY AV	CN	\$299,819	04/30/2010	Planned	
100050988	CORRIDOR STUDY NEW ROUTE FROM SR-14 TO CR-7 (DEATSVILLE HIGHWAY)	PE	\$166,400	03/01/2010	Planned	
100053060	WIDEN & RESURFACE ANN STREET FROM BREWTON ST. AND REALIGN TO CR-235 (FEDERAL C	RW	\$83,200	03/01/2010	Planned	
100053769	RESURFACE CR-29 (GIN SHOP HILL ROAD) FROM SR-206 (W 4TH STREET) TO SR-6 (US-82)	CN	\$219,780	02/26/2010	Planned	1/29/2010
100053770	RESURFACE CR-75 (MCQUEEN SMITH ROAD) FROM CR-2 (EAST MAIN STREET) TO SR-14	CN	\$631,738	02/26/2010	Planned	1/29/2010
100053771	RESURFACE CR-2 (ALABAMA RIVER PARKWAY) FROM SR-143 TO CR-60 (JACKSON LAKE ROAD)	CN	\$522,189	02/26/2010	Planned	1/28/2010
100053865	PAVE SHOULDERS & TRAFFIC EDGE STRIPE ON CR-4 (RIFLE RANGE ROAD) FROM CR-8 (REDL	CN	\$297,933	12/04/2009	Authorized	11/6/2009
100054274	RESURFACE SOUTH COURT STREET FROM CR-233 (FAIRVIEW AVENUE) TO SR-6 (US-331, SOUT	PE	\$180,000	03/01/2010	Planned	
100054278	RESURFACE ADAMS AVE FROM CR-232 (DECATUR STREET) TO SOUTH COURT STREET, AND V	PE	\$195,000	03/01/2010	Planned	
100054281	RESURFACE SOUTH PERRY STREET FROM CR-233 (FAIRVIEW AVENUE) TO ARBA STREET	PE	\$150,000	03/01/2010	Planned	
100054283	RESURFACE CR-233 (FAIRVIEW AVENUE) FROM SOUTH COURT STREET TO I-65	PE	\$195,000	03/01/2010	Planned	

## URBAN AREA FUNDING AVAILABILITY REPORT

URBAN AREA	MONTGOMERY	FEDERAL FUNDING ONLY					
PROJECT NO	PROJECT DESCRIPTION	SCOPE	FEDERAL FUNDS	Start Date	Status	Authorized	
100054290	WETUMPKA RIVER WALK EXTENSION FROM TALLASSEE STREET TO SR-14 (COOSA RIVER PAR	PE	\$41,972	06/01/2010	Planned		
100054292	RESURFACE CR-2 (EAST MAIN STREET) FROM SR-3 (US-31, SOUTH MEMORIAL DRIVE) TO VIRG	CN	\$175,824	06/25/2010	Planned		
100054293	RESURFACE CR-2 (EAST MAIN STREET) FROM SHADY OAK DRIVE TO CR-75 (MCQUEEN SMITH	CN	\$352,000	06/25/2010	Planned		
100054294	RESURFACE CR-2 (COBBS FORD ROAD) FROM CR-75 (MCQUEEN SMITH ROAD) TO SR-6 (US-82	CN	\$316,800	06/25/2010	Planned		
100054297	SHOULDER PAVING CR-59 (FIRE TOWER ROAD) FROM CR-8 (REDLAND ROAD) TO SR-14 (ECP 2	CN	\$223,954	06/25/2010	Planned		

## TOTALS FOR FISCAL YEAR 2010

Prior FY Carryover	\$9,038,103	Authorized Projects	\$4,788,866	Unobligated Balance	\$8,114,227
FY Apportionment	\$3,864,990	Planned Projects	\$5,217,438	Remaining Balance	\$2,896,789
FY Special Allocation	\$0	Total Project Funds	\$10,006,305		
Total Funds	\$12,903,093				

100040817	WIDEN AND RESURFACE ZELDA ROAD FROM ANN STREET TO CARTER HILL ROAD	CN	\$1,248,000	11/05/2010	Planned	
100050968	RESURFACE CR-24 (E OLD HAYNVILLE ROAD) FROM SR-9 (US-331) TO CR-61 (HOBBIE ROAD)	CN	\$643,422	04/29/2011	Planned	
100054285	RESURFACE CR-233 (FAIRVIEW AVENUE) FROM SOUTH COURT STREET TO I-65	CN	\$1,300,000	01/14/2011	Planned	
100054291	WETUMPKA RIVER WALK EXTENSION FROM TALLASSEE STREET TO SR-14 (COOSA RIVER PAR	CN	\$436,507	11/05/2010	Planned	
100054295	SHOULDER PAVING CR-8 (REDLAND ROAD) FROM CR-4 (RIFLE RANGE ROAD) TO CR-116 (ECP 2	CN	\$353,495	07/29/2011	Planned	

## TOTALS FOR FISCAL YEAR 2011

Prior FY Carryover	\$2,896,789	Authorized Projects	\$0	Unobligated Balance	\$6,761,779
FY Apportionment	\$3,864,990	Planned Projects	\$3,981,425	Remaining Balance	\$2,780,354
FY Special Allocation	\$0	Total Project Funds	\$3,981,425		
Total Funds	\$6,761,779				

### 3.3 LIST OF ACRONYMS/ABBREVIATIONS

AL/SR	Alabama Highway/State Route
ALDOT	Alabama Department of Transportation
BR	Bridge
BSP	Base and Pave
CAC	Citizens Advisory Committee
CAP	Transit Capital
CARPDC	Central Alabama Regional Planning & Development Commission
CN	Construction
CR	County Road
EJ	Environmental Justice
FCS	Functional Classification System
FHWA	Federal Highway Administration
FTA	Federal Transit Administration
GDB	Grade, drain, and bridge
GPB	Grade, drain, base, pave, and bridge
GIS	Geographic Information System
IM	Interstate maintenance
ITS	Intelligent Transportation System
LRTP	Long Range Transportation Plan (20 Year Plan)
MATS	Montgomery Area Transit System
MP	Mile post
MPA	Metropolitan Planning Area (identified by the Census Bureau)
MPO	Metropolitan Planning Organization
MT	Maintenance program
MUTCD	Manual on Uniform Traffic Control Devices
NHS	National Highway System
OTH	Other
PE	Preliminary Engineering
RW/ROW	Right of Way
SA	Study Area
Section 5303	FTA Metropolitan Planning Funds
Section 5307	FTA formula funds for urbanized areas
Section 5309	FTA capital program funds (currently earmarked by Congress)
Section 5310	FTA Elderly and Persons with Disabilities Program Funds
Section 5311	FTA Formula Funds for Rural Transportation Programs
Sixth Division	ALDOT Division consisting of eight counties (Autauga, Bullock, Butler, Dallas, Elmore, Lowndes, Macon, and Montgomery)
SAFETEA-LU	Safe, Accountable, Flexible, Efficient Transportation Equity Act: A Legacy for Users
STIP	State Transportation Improvement Program
STPOA	Surface Transportation Program Other Area
STP	Surface Transportation Program
TCC	Technical Coordinating Committee
TE	Transportation Enhancement
TEA-21	Transportation Equity Act for the 21 <sup>st</sup> Century
TIP	Transportation Improvement Program
UA/UZA	Urbanized Area (identified by the Census Bureau)
UC	Urban Cluster (identified by the Census Bureau)
UPWP	Unified Planning Work Program
UT	Utility Work

### 3.4 FUNDING CODES

AAD	DEFENSE ACCESS
A-AD	DEFENSE ACCESS ROAD PROGRAM
ACAPD	ADV CONST APPA DEVEL
ACBGBRZ	GARVEY BONDS ISSUE 1 BRIDGES
ACBR	ADVANCE CONST BRIDGE
ACER	ADV CON EMERGENCY REL
ACF	ADV CON PRIMARY PROG
ACGBBR	ADVANCE CONST BRIDGE
ACGBSTPNU	GARVEY BONDS ISSUE 1 "STP"
ACHPP	AC HIGH PRIORITY CORR
ACIM	ADCON INTERSTATE MAINT
ACIR	ADCON IR 36MO PAYBK
ACNH	ADCON NATIONAL HWY SYSTEM
ACSTP	ADVANCED CONST STP
ACSTPAA	ADV CONS STPAA REG
ACSTPOA	AC STEA OTHER THAN 200K URBAN
AEROF	FEDERAL AERONAUTICS
AEROS	STATE AERONAUTICS
AFS	DEMO N BHAM BELTLINE
APD	APPALACHIAN DEV HWY SYS
APL	APPALACIAN HWY
APSP	AIRPORT PROJECT SPONSORSHIP PR
ASAP	ACCELERATED SAFETY ACTIVITIES
ASD01	ALABAMA STATE DOCKS
BAC	DUI. 08 BLOOD ALCOHOL
BELT	SFTY INCENT SEAT BELT APPORT
BR	BR REPLACEMENT
BRZ	BR REPLACEMENT 15% OFF SYS
CA	AD CONTROL APPN
CFP	HWY XING FED PROJECT
CJF	JUNKYARD CONTROL
CMAQ	CONGS MIT & AIR QUALITY
DBAA	STEA ANY AREA
DBBH	STEA URBAN AREA BIRMINGHAM
DBE	MINORITY BUSINESS ENTERPRISE
DBMB	STEA URBAN AREA MOBILE
DBMT	STEA URBAN AREA MONTGOMERY



### 3.4 FUNDING CODES

BRZ	BR REPLACEMENT 15% OFF SYS
CA	AD CONTROL APPN
CFP	HWY XING FED PROJECT
CJF	JUNKYARD CONTROL
CMAQ	CONGS MIT & AIR QUALITY
DBAA	STEAM ANY AREA
DBBH	STEAM URBAN AREA BIRMINGHAM
DBE	MINORITY BUSINESS ENTERPRISE
DBMB	STEAM URBAN AREA MOBILE
DBMT	STEAM URBAN AREA MONTGOMERY
DBOA	STEAM OTHER THAN 200K URBAN
DBPC	STEAM URBAN AREA PHENIX CITY
DE	DEMO PROJECTS
DEMO	MISC HIGHWAY PROJ
FDA	FEMA FED DISASTER ASSIST
DESTP	STP DEMOS
DP	ECONOMIC GROWTH CNTR
DPI	INNOVATIVE PROJECTS
DPR	RURAL ACCESS
DPR-APD	ADCON RURAL ACCESS
DPS	HIGH PRIORITY NHS CORRIDORS
DRTD	DELTA REGION TRANSP DEVEL LZ50
EB	EQUITY BONUS
ER	EMERGENCY RELIEF
F	RURAL PRIMARY
F	CONSOLIDATED PRIMARY
F	PRIMARY
FAUP	FEDERAL WORK ORDERS
FBD	FERRY BOAT DISC FUNDS
FDR	FOREST DEVELOPMNT RD
FF	PRIORITY PRIMARY
FH	FOREST HIGHWAY
FLEX	FLEXIBLE ACCT FUNDS
FLH	PUB LANDS OLD FUNDS
FR	PRIMARY 4R PROGRAM
FTA3	FTA SECTION 5309
FTA3C	CAPITAL NEW STARTS/FED EARMARK

### 3.4 FUNDING CODES

FTA9	FTA SECTION 5307
FTA9C	CAPITAL PROGRAMS FOR >50K
HCBPP	HISTORIC COVERED BR PRES PROG
HDPC	HIGH PERFORMANCE CONCRETE
HES	HAZARD ELIM PROGRAM
HHS	HIGH HAZARD LOCATION
HPP	HI PRIORTY PROJECT PROGRAM
HPR	HWY PLAN-RESEARCH
HRRR	HWY SAFETY IMP PROG RURAL LU
HSIP	HIGHWAY SAFETY IMP PROG
HSR	MW HIGH SPEED RAIL COOR
I	INTERSTATE REGULAR
IBRCP	INNOVATIVE BR RES & CONST
ID	INTERSTATE DSCR FUND
IDR	INTRST DISCRENRY 4R
IM	INTERSTATE MAINTENANCE
IMD	INTERSTATE MAINT DISCRET
ITS	INTELIGENT TRANS SYS FUNDS
IVH	CONGESTION MANAGEMENT
JARC	JOB ACCESS REVER COMMUTE
LSF	LANDSCAPING-SCENIC
LTAP	LOCAL TECH ASSIST PROG
LVOE	LEVEL OF EFFORT
M	URBAN SYST NOT ATRIB
MAAA	ANY AREA
MAAA	STE A ANY AREA
MABH	URBAN AREA BIRMINGHAM
MAMB	STE A URBAN AREA MOBILE
MAMT	URBAN AREA MONTGOMERY
MAOA	OTHER THAN 200K URBAN
MAPC	URBAN AREA PHENIX CTY
MBE	MBE SUPPORT SERVICES
MCAA	MILITARY CONST APPR ACT
MG	MIN GUARANTEE REG OBLIG
NCPD	NAT CORRIDOR PLAN AND DEV
NFIG	NEW FREEDOM INIT RURAL
NH	NATIONAL HIGHWAY SYSTEM

### 3.4 FUNDING CODES

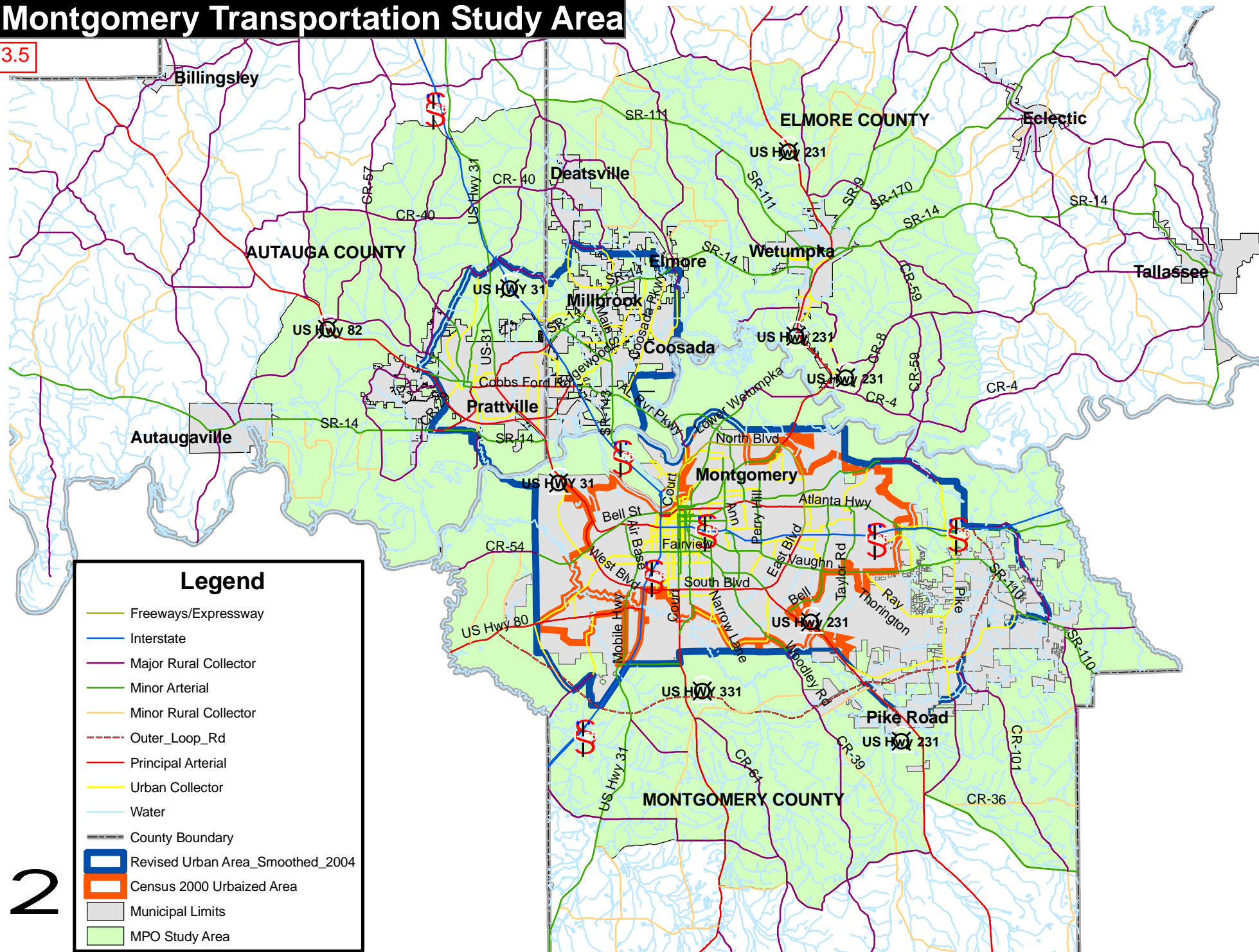
NHBP	NAT HISTORIC BRDG PROG LE30
NHI	NHI TRAINING PROGRAM
NRD	RIDSHARE DEMO PROGRM
OJT	ON THE JOB TRAINING PROGRAM
OS	OFF SYSTEM ROADS
PFH	FOREST HIGHWAY
PL	METROPOLITAN PLANNING
PLH	PUBLIC LANDS HIGHWAY
PMS	PAVEMENT MARKING DEMO
RECA	REDIST CERTAIN AUTH
REST	FUND RESTOR APPN
RESTBH	FUND RESTORATON BHAM
RESTF	FUNDING RESTORATION APPN
RESTM	FUND RESTORATON MONTGOMERY
RESTPC	STEAM FUNDING RESTOR PHENIX
RHCH	RAIL-HWY HAZARD ELIM
RHPD	RAIL-HWY PROTECTION DEV
ROS	RDSIDE OBSTACLE ELIM
RPT	FTA SECTION 5311
RRO	RR-HWY OFF SYS OTHER
RRP	RR-HWY XING PROT DEV
RRS	RR-HWY XING OTHER
RS	RURAL SECONDARY
RTAP	RUR TRANS ASST PROG
S	SECONDARY
SB	TEA-21 SCENIC BYWAYS
SBPG	SAFETY BELT PROG GRANT
SMFF	SURP MILITARY FIELD FUND
SOS	SAFER OFF SYSTEM RDS
SPGT	OHTS SEC. 402 GRANTS
SPR	HIGHWAY PLAN & RESEARCH
SPS	LONG TERM PAVEMENT PERF
SR	SECONDARY 4R PROGRAM
SRS	SAFER ROADS DEMO
SRTS	SAFE RTES TO SCHOOL PROG
STMAA	STP ANY AREA ARRA
STMBH	URBAN AREA BHRM ARRA

### 3.4 FUNDING CODES

STMFB	FERRY BOAT DISCRET ARRA
STMFH	FOREST HIGHWAY ARRA
STMHV	U AREA HUNT ARRA
STMLL	URBAN AREA LILLIAN/PENS ARRA
STMMB	URBAN AREA MOBILE ARRA
STMNU	NON-URBAN AREAS ARRA
STMOA	OTHER THAN 200K ARRA
STMPC	URBAN AREA PHENIX CITY ARRA
STMTE	TRANSPORTATION ENHANCEMNT ARRA
STPAA	STP ANY AREA LU
STPBH	URBAN AREA BIRMINGHAM
STPHS	HAZARD ELIMINATION
STPHV	URBAN AREA HUNTSVILLE
STPLL	URBAN AREA LILLIAN/PENS
STPMB	URBAN AREA MOBILE
STPMT	URBAN AREA MONTGOMERY
STPNU	NON-URBAN AREAS
STPOA	STP < 200K
STPPC	URBAN AREA PHENIX CITY
STPRH	RAIL-HWY HAZARD ELIM
STPRR	RAIL-HWY DEV
STPSA	ANY HAZARD
STPTE	TRANSPORTATION ENHANCEMENT
STRGB	SURF TRANS RSCH
TE	WORK ZONE SAFTEY TEST EVAL
TBR	TIMBER BRIDGE DEMO
TCD	TRAFFIC SIGNAL DEMO
TCP	MOTOR FUEL TAX COMPLIANCE
TCSP	TRANS COMM SYS PRES
TI	TRANSPORTATION IMP PROJ
TQF	TRANSITION QUARTER
U	URBAN EXTENSION ABC
UMPL	FTA SECTION 5303
UMTA	FTA SECTION 5310
UMTAC	CAPITAL ELDERLY/HANDICAPPED
UWRG	UNITED WE RIDE GRANT 5314

# Montgomery Transportation Study Area

3.5



2