

Montgomery Metropolitan Planning Organization (MPO)

DRAFT

FISCAL YEAR 2016 UNIFIED PLANNING WORK PROGRAM (UPWP) OCTOBER 1, 2015 – SEPTEMBER 30, 2016



Prepared by the City of Montgomery Transportation Planning Division, as staff to
the MPO.

June 2015

MONTGOMERY METROPOLITAN PLANNING ORGANIZATION

DRAFT

UNIFIED PLANNING WORK PROGRAM (UPWP) FISCAL YEAR 2016 OCTOBER 1, 2015 – SEPTEMBER 30, 2016

This document is posted at <http://www.montgomerympo.org>

For information regarding this document, please contact:

Mr. Robert E. Smith Jr., Director of Planning/MPO Administrator (MPO Staff)

The City of Montgomery, Planning and Development Department

Transportation Planning Division

Intermodal Transportation Facility

495 Molton Street

Montgomery, AL 36104

Phone: (334) 625-2218 · Fax: (334) 625-2326

Email: rsmith@montgomeryal.gov

MPO Website Address: <http://www.montgomerympo.org>

This UPWP was prepared as a cooperative effort of the US Department of Transportation (USDOT), Federal Highway Administration (FHWA), Alabama Department of Transportation (ALDOT), Federal Transit Administration (FTA), and local governments as a requirement of 23 USC 134 and 135 as amended by MAP-21 Sections 1201 and 1202, July 2012. This document does not necessarily reflect the official views or policies of the US Department of Transportation.

Montgomery Metropolitan Planning Organization (MPO) Members

Voting Members

Mayor, City of Montgomery – Hon. Todd Strange
Mayor, City of Prattville – Hon. William Gillespie
Autauga County Commissioner – Hon. Carl Johnson
Southeast Region Engineer, ALDOT – Mr. George Conner
Mayor, City of Wetumpka – Hon. Jerry Willis (**MPO Vice Chairman**)
Mayor, Town of Coosada – Hon. Connie Hand
Councilman, City of Montgomery – Hon. Charles Jinright (**MPO Chairman**)
Montgomery County Commissioner – Hon. Elton Dean
Mayor, City of Millbrook – Hon. Al Kelley
Councilman, City of Montgomery – Hon. Cornelius Calhoun
Elmore County Commissioner – Hon. David Bowen
Mayor, Town of Pike Road – Hon. Gordon Stone
Mayor, Town of Deatsville – Hon. Clayton Edgar
Mayor, Town of Elmore – Hon. Margaret White
Montgomery County Commissioner – Hon. Dan Harris
Councilman, City of Montgomery – Hon. Tracy Larkin
Councilman, City of Montgomery – Hon. Richard Bollinger

Non-Voting Members

Bureau Chief, Transportation Planning and Modal Programs ALDOT - Mr. Robert J. Jilla
General Manager, The M - Montgomery Area Transit System Mr. Kelvin L. Miller
Director, Central Alabama Regional Planning and Development
Commission - Mr. Greg Clark
Autauga County Rural Transportation Director
Division Administrator, Federal Highway Administration Mr. Mark D. Bartlett
Member of City of Montgomery Planning Commission Mr. Ken Upchurch
Community Planner, Federal Transit Administration - Ms. Abigail Rivera –
Mr. Robert E. Smith Jr., Director of Planning/MPO Administrator

MPO TRANSPORTATION PLANNING STAFF

Mr. Robert E. Smith Jr., Director of Planning/MPO Administrator
Mr. Kindell C. Anderson, Senior Planner
Ms. April Delchamps, Senior Planner
Mr. James Askew, GIS Analyst
Mr. Joe C. Mack Jr., Grants Accountant
Ms. Lisa Walters, Transportation Planning Technician

Montgomery Metropolitan Planning Organization (MPO) Technical Coordinating Committee (TCC) Membership

TCC-Voting Members

Representative
ADECA

Mr. Locke (Bubba) Bowden
Traffic Engineer
City of Montgomery

Mr. David Bufkin
County Engineer
Autauga County

Mr. Lee Connor (Chris Christensen)
Montgomery Association for Retarded Citizens

Mr. Robert E. Smith Jr. (**TCC Chairman**)
Director, Planning Department
City of Montgomery/MPO Staff

Mr. Clint Andrews
Planning & Programs Team Leader
Federal Highway Administration

Mr. Chris Howard
ADEM
Air Division Planning Branch Chief

Mr. Stuart Peters, Engineer
Town of Coosada/City of Millbrook

Mr. John McCarthy
Traffic Engineer III
City of Montgomery

Mr. Chris Conway
Public Works Director
City of Montgomery

Mayor Margaret White
Town of Elmore

Mr. Joel Duke, City Planner
City of Prattville

Mayor W. Clayton Edgar
Town of Deatsville

Mr. Jerry Peters
City Engineer
City of Millbrook

Mr. David Bollie
County Transportation Engineer
ALDOT Southeast Region

Mr. Richie Beyer
County Engineer
Elmore County

Mr. Kenneth White, Engineer
Town of Pike Road

TCC cont'd

Mr. Kelvin L. Miller
General Manager
Montgomery Area Transit System

Mr. Bill Tucker, Executive Director
Central AL Regional Planning &
Development Commission

Director
Autauga County Rural
Transportation

David Robison
City Planning and Project Director
City of Wetumpka

Mr. Tommy Tyson
Land Use Controls Administrator
City of Montgomery

Mr. Frank Filgo, President
Alabama Trucking Association

Mr. George Speake
County Engineer
Montgomery County

Mr. Patrick Dunson
City Engineer
City of Montgomery

Non-Voting TCC Members

Mr. Randy Stroup
Assistant Bureau Chief
Transportation Planning/Modal Programs
-ALDOT

Mr. Phil Perry
Executive Director
Montgomery Airport Authority

Emmanuel Oranika, Ph.D.
Metropolitan Transportation Planning
Administrator
ALDOT

Ms. Alfredo Acoff, Coordinator
Environmental Technical Section ALDOT

**Montgomery Metropolitan Planning Organization (MPO)
Citizens Advisory Committee (CAC) Membership**

Mr. Charles Rowe
Elmore County

Mr. Crews Reaves
City of Montgomery

Mr. James Brown (**CAC Chairman**)
City of Montgomery

Mr. Rodger Burnette
Montgomery County

Ms. Valeria Harman
City of Montgomery

Mr. Johnny Jackson
City of Montgomery

Mr. Rick Beauchamp
Elmore County

Mr. David Martin
City of Montgomery

Ms. Greta Duckett
City of Montgomery

Mr. Blair Rehnberg
Town of Coosada

Vacant
City of Montgomery

Mr. Edward Stevens
City of Montgomery

Ms. Gracie Stroud
City of Montgomery

Vacant
City of Millbrook

Mr. Theodore White
City of Montgomery

Mr. Augustus Townes, Jr.
City of Montgomery

Vacant
City of Montgomery

Vacant
City of Montgomery

Vacant
City of Prattville

Vacant
City of Prattville

Montgomery MPO Resolution Draft 2016 UPWP

Montgomery Metropolitan Planning Organization (MPO) Adopting the Draft Fiscal Year 2016 Unified Planning Work Program

WHEREAS, the Montgomery Metropolitan Planning Organization (MPO) is the organization designated by the Governor of the State of Alabama as being responsible, together with the State of Alabama, for implementing the applicable provisions of 23 USC 134, and 135 (amended by MAP-21, Section 1201 and 1202, July 2012); 42 USC 2000d-1, 42 USC 7401; 23 CFR 450 and 500; 40 CFR 51 and 93; and

WHEREAS the U.S. Department of Transportation requires all urbanized areas, as established by the U.S. Bureau of the Census, doing area-wide urban transportation planning that involves more than one Department of Transportation operating administration, to submit a Unified Planning Work Program as a condition for meeting the provisions of Title 23, U.S. Code, Section 134; and,

WHEREAS consistent with the declaration of these provisions, the Montgomery Metropolitan Planning Organization Transportation Planning Staff, in cooperation with the Alabama Department of Transportation, has prepared a Final Unified Planning Work Program for Fiscal Year 2016; and,

WHEREAS pursuant to its duties, functions, and responsibilities, the Montgomery Metropolitan Planning Organization (MPO) on this the 11th Day of June 2015, did review and evaluate the aforementioned 2016 Unified Planning Work Program, summarized on the attached pages; now,

THEREFORE BE IT RESOLVED by the Montgomery Metropolitan Planning Organization (MPO) that the same does hereby endorse and adopt said Draft *Fiscal Year 2016 Unified Planning Work Program* as written.

Charles Jinright, MPO Chairman

Date: June 11, 2015

ATTEST:

Robert E. Smith, MPO Secretary

Table of Contents

Title/Contacts	i
MPO Members and MPO Transportation Planning Staff	ii
TCC Members	iii
CAC Members	v
MPO Resolution	vi
Table of Contents	vii
Overview	1
Introduction	2
UPWP Tasks	
1.0 General Administration	
1.1 MPO Administration	7
1.2 Continuity of Operations Plan (COOP)	8
2.0 Unified Planning Work Program	
2.1 Unified Planning Work Program (UPWP)	10
3.0 GIS Data Collection and Analysis	
3.1 GIS Database Development, Management and Computers	12
3.2 Preparation of Emissions Estimates Using MOVES 2010 Software	14
4.0 Public Involvement	
4.1 General Public Involvement	15
4.2 Environmental Justice Planning and Evaluation	16
4.3 Public Involvement for Air Quality Conformity	17
5.0 Transportation Systems	
5.1 Long Range Transportation Plan (LRTP)	19
5.1.1 LRTP Air Quality Conformity Report Preparation	20
5.1.2 Amended LRTP for Air Quality Conformity	21
5.2 Transportation Improvement Program (TIP)	22
5.2.1 Amended TIP project listings for Air Quality Conformity	23
5.3 Transit Planning and Administration	24
5.4 Disadvantaged Business Enterprise (DBE)	26
5.5 Paratransit Service for the Disabled	26
5.6 Congestion Management Planning	27
5.7 Safety Planning and Monitoring	29
5.8 Special Projects, Corridor Development and DRI	30
5.9 Intermodal and Freight Planning	31
5.10 Bicycle and Pedestrian Planning	31
6.0 Environmental Mitigation and Streamlining	
6.1 Air Quality Analysis, Monitoring, and Planning	33
6.2 Climate Change and Green House Gas (GHG) Emissions	34
APPENDICES	
Figure 1 MPO Area Map	36
MPO Organization Narrative	37
Figure 2 MPO Organizational Chart	41
List of Acronyms and Abbreviations	42
Table 1: Final Fiscal Year 2016 UPWP Summary Budget	44
Table 2: Final Fiscal Year 2016 UPWP Agency Participation Schedule	45

The Transportation Planning Process

For The

Montgomery Metropolitan Planning Organization Urban and Study Area

Overview

Each metropolitan planning organization, as a condition of the receipt of Federal highway and transit capital or operating assistance, is required to have a transportation planning process. Required by this process is the development of a long-range transportation plan, a short-range transportation improvement program, an effort to plan public transportation, outreach and notification to low-income and minority populations, and a planning work program, which includes other planning and project development activities to address transportation issues in the study area.

The Metropolitan Planning Organization (MPO) is the group of elected officials responsible for making transportation decisions in the MPO study area. The MPO is designated by the Governor, in agreement with local governments.

The City of Montgomery is the designated recipient of the United States Department of Transportation (USDOT) planning funds for use in performing transportation planning work for the MPO, due to being the initial core urbanized area of the Metropolitan Statistical Area (MSA). These funds are provided on a pass through basis, by the Alabama Department of Transportation (ALDOT) by means of a continuing agreement.

The work tasks described in this document are conducted on a continuous basis in order to maintain certification and eligibility for Federal highway and transit funds and to plan for the orderly and efficient development of the transportation system. An agreement between the Alabama Department of Transportation and members of the Metropolitan Planning Organization outlines the responsibility of each organization in the transportation planning process.

INTRODUCTION

UNIFIED PLANNING WORK PROGRAM

The Unified Planning Work Program (UPWP) has been prepared to define the work tasks and anticipated funding requirements for the Montgomery Urban Area and Study Area for the Fiscal Year 2016, which covers the period October 1, 2015 to September 30, 2016. This document serves to inform public officials and agencies who contribute manpower and allocate funds to the transportation planning process of the proposed work program. In addition, the Unified Planning Work Program (UPWP) provides the budget for federal, state, and local funding of transportation planning activities identified in the document.

Most traditional tasks are funded with Federal (PL) transportation planning funds. In metropolitan planning areas, planning funds are available from the Federal Transit Administration (FTA) (Section 5303) and the Federal Highway Administration (FHWA) (PL) to support transportation planning activities as required by FTA and FHWA regulations. The FTA Section 5303 funds have been combined with FHWA Planning funds, so all funds are in one amount and not separate. FHWA requires that capital purchases of \$5,000.00 or more be presented as a line item in the UPWP document, and that it be approved by FHWA through ALDOT prior to expenditure. Any single invoice purchase of \$1,500.00 or more, regardless of type, requires written approval by ALDOT prior to expenditure (ALDOT letter dated February 11, 2009).

The Unified Planning Work Program, as outlined in this document, contains the work tasks necessary for the program participants to conduct the necessary transportation planning activities for the Montgomery MPO Urban Area and Study Area.

The UPWP contains a brief description of each specific task, anticipated products, responsible agencies, sources, and amounts of funding. Also, herein included are tables summarizing amounts and sources of funds by task and how funds are to be spent. Any significant deviation from the work outlined in the UPWP requires a new public involvement review period, Citizens Advisory Committee review, Technical Coordinating Committee review, and the formal approval of the Metropolitan Planning Organization.

In developing the UPWP, the MPO is required to consider the SAFETEA-LU (Safe, Accountable, Flexible, Efficient Transportation Equity Act: A Legacy for Users) Planning Factors, retained in MAP-21 (Moving Ahead for Progress in the 21st Century) as the *Scope of the Planning Process*. The MPOs must consider projects and strategies that will:

- (1) Support the **economic vitality** of the metropolitan area, especially by enabling global competitiveness, productivity, and efficiency;
- (2) Increase the **safety** of the transportation system for motorized and non-motorized users;
- (3) Increase the **security** of the transportation system for motorized and non-motorized users;
- (4) Increase the **accessibility and mobility** options available to people and for freight;
- (5) Protect and enhance the **environment**, promote energy conservation, improve the quality of life, and promote **consistency** between transportation improvements and state and local planned growth and economic development patterns;
- (6) Enhance the **integration and connectivity** of the transportation system, across and between modes, for people and freight;
- (7) Promote efficient **system management** and operation; and
- (8) Emphasize the **preservation** of the existing transportation system.

The UPWP was prepared based on the eight factors of the Scope of the Planning Process. The Scope factors are addressed by each UPWP task and are listed on each at the end of each task's pages in this document.

Livability Principles and Indicators

Increasingly, federal and state agencies are using Performance Measures as a way of ensuring greater accountability for the expenditure of public funds in an ever growing number of programs and activities across a variety of disciplines. Within the transportation sector and the planning processes associated with transportation infrastructure development, ALDOT has adopted the Livability Principles and Indicators as a sustainability measurement against future actions.

All planning tasks must be measured against these Livability Principles:

- 1) Provide more transportation choices
- 2) Promote equitable, affordable housing
- 3) Enhance economic competitiveness
- 4) Support existing communities
- 5) Coordinate policies and leverage investment
- 6) Value Communities and neighborhoods

As a measure of sustainability of these principles, the MPO will provide the following Livability Indicators:

- 1) Percent of jobs and housing located within one-half (1/2) mile of transit service
- 2) Percent of household income spent on housing and transportation
- 3) Percent of workforce living within a thirty (30) minute or less commute from primary job centers
- 4) Percent of transportation investment dedicated to enhancing accessibility of existing transportation systems
- 5) Percent of transportation projects where more than one federal funding source is utilized
- 6) Percent of housing located in walkable neighborhoods with mixed use destinations located nearby

Planning Emphasis Areas (PEAs)

MAP-21 Implementation

- Transition to Performance Based Planning and Programming. The Montgomery MPO has previously adopted Livability Indicators and will continue to update them. Guidance on Performance Measures has not yet been released, but further action will be taken once PM guidance is released.
Tasks 1, 2.1, 3.1, 4.1, 5.1, 5.2, 5.3, 5.6, 5.9, 5.10

Models of Regional Planning Cooperation

- Promote cooperation and coordination across MPO boundaries and across State boundaries, where appropriate, to ensure a regional approach to transportation planning. The Montgomery MPO works closely with DOT and other municipalities outside of the MPO study area on plans and issues of mutual interest, such as the Selma to Montgomery Trail and the Birmingham to Montgomery Rail project.
Tasks 1, 3.1, 4.1, 5.1, 5.2, 5.8, 5.10

Ladders of Opportunity

- Access to essential services – as part of the transportation planning process, identify transportation connectivity gaps in access to essential services. The Montgomery MPO works closely with the Montgomery Area Transit System in identifying needs within its fixed route and American with Disabilities (ADA) services. Gaps in pedestrian facilities are identified in the Montgomery MPO's 2012 Bicycle and Pedestrian plan.
Tasks 1, 4.1, 5.1, 5.2, 5.3, 5.5, 5.9, 5.10

Title VI in Preparation of the UPWP

The Montgomery Area Metropolitan Planning Organization (MPO) is committed to ensuring public participation in the development of all transportation plans and programs. It is the overall goal of the MPO that the transportation planning process be open, accessible, transparent, inclusive, and responsive. As a continuing effort by the

MPO to provide public access and the means by which to engage in the planning process, the MPO has established the following public participation goals for all documents and programs:

- (1) An Open Process – To have an open process that encourages early and continued public participation. All MPO and committee meetings are open to the public.
- (2) Easy Information Access – To provide complete and timely information regarding plans, programs, procedures, policies, and technical data produced or used during the planning process to the general public and the media.
- (3) Notice of Activities – To provide timely and adequate public notice of hearings, meetings, reviews, and availability of documents.
- (4) Public Input and Organizational Response – To demonstrate consideration and recognition of public input and comments and to provide appropriate responses to public input.
- (5) An Inclusive Process – To encourage participation in the planning process by traditionally under-represented segments of the community; low-income groups, minorities, persons with disabilities, and the elderly.

Additionally, the Montgomery Area MPO is and will be compliant with and follow all Title VI laws, processes, and programs to include the following:

- Civil Rights Act of 1964, 42 USC 2000d, et seq., which prohibits exclusion from participation in any federal program on the basis of race, color, or national origin.
- 23 USC 324 which prohibits discrimination on the basis of sexual orientation, adding to the landmark significance of 2000d. This requirement is found in 23 CFR 450.334(1).
- Rehabilitation Act of 1973, 29 USC 701 Section 504, which prohibits discrimination on the basis of a disability, and in terms of access to the transportation planning process.
- Americans with Disabilities Act of 1990, which prohibits discrimination based solely on disability. ADA encourages the participation of people with disabilities in the development of transportation and paratransit plans and services. In accordance with ADA guidelines, all meetings conducted by the MPO will take place in locations which are accessible by persons with mobility limitations or other impairments.
- Executive Order 12898 or referred to as *Environmental Justice*, which requires that federal programs, policies and activities affecting human health or the environment will identify and avoid disproportionately high and adverse effects on minority or low-income populations. The intent was to ensure that no racial, ethnic, or socioeconomic group bears a disproportionate share of negative environmental consequences resulting from government programs and policies.
- Limited English Proficiency (LEP) Plan which is required by Title VI of the Civil Rights Act of 1964, Executive Order 13166, and FTA Circular C

4702.1B, October 2012. The Decatur Area MPO has completed a Four Factor Analysis of the Decatur Area Metropolitan Planning Area (MPA) to determine requirements for compliance with the Limited English Proficiency (LEP) provisions. Based on the analysis, the MPO has identified a population within the MPA that may require MPO assistance in participating in the planning process. A Limited English Proficiency (LEP) Plan has been developed and can be accessed on the MPO website.

In order to further support the public participation goals of the Montgomery Area MPO, the public is encouraged to participate in the development of the UPWP. The 2016 UPWP process will include two public involvement meetings designed to obtain input from the public concerning the UPWP process in the Montgomery Area Metropolitan Planning Area (MPA). In addition, once the draft UPWP is approved, it will be subject to a 30-day public comment period before adoption of the final document. A summary of the public outreach activities and results are included in the Appendices. All Montgomery Area MPO meetings are open to the public. At these meetings, the MPO committees review and approve the draft and final UPWP documents. Interested individuals may also review and comment upon these documents in tandem with the MPO committees. Individuals may address their concerns to the MPO committees directly at any meetings they attend. The Transportation Planner at the Montgomery Area MPO should be contacted to coordinate an address to the MPO committees and to obtain draft and final documents.

Detailed public participation procedures are outlined in the 2013 Public Participation Plan (PPP) which can be found at on the MPO website.

UPWP Format

The UPWP is divided into work tasks. The work tasks outline the transportation planning work that will be performed by the MPO Transportation Planning Staff at the City of Montgomery-Department of Planning and Development, Transportation Planning Division and the Alabama Department of Transportation during FY-2016. The description of each work task includes an objective(s), previous work performed, products, staffing, schedule/timeline and financial responsibility. The appendix details the MPO study area map, MPO organization narrative, MPO organizational chart, acronyms and abbreviations used in the transportation planning process, and the whole UPWP budget and agency participation schedule by work task.

UPWP TASK 1
METROPOLITAN PLANNING ORGANIZATION ADMINISTRATION

SUBTASK 1.1: MPO ADMINISTRATION

Objectives: To establish an effective and efficient transportation planning program that manages tasks identified in the Unified Planning Work Program (UPWP). Administrative duties include coordination of the various advisory committees, developing meeting agendas and minutes, and maintenance of files and administrative records. This includes filing of progress reports and invoices and reporting other activities as needed. Financial obligations include: invoicing, financial record-keeping, ensuring continuing control over eligible expenditures, and maintenance of timesheets and other employee records. To continuously maintain and create all necessary and required documents and documentation for transportation planning process administrative compliance.

Previous Work: The MPO Planning Staff, housed in the City of Montgomery Transportation Planning Division, has managed the transportation planning process for more than 30 years. Administrative updates have been submitted on a regular basis. Administrative work related to plans, programs, and projects have been prepared. Monthly invoices detailing financial transactions have been prepared and semi-annual progress reports have been prepared with financial status per task. Invoices for transactions for transportation planning related work have been processed as well. The MPO Staff holds staff meetings twice monthly and as needed to assign work and get progress reports on ongoing work activity. Senior MPO Staff Planner prepared employee evaluations for annual merit pay increase. Senior MPO Staff Planner worked with and provided annual audit information to City of Montgomery Auditors. This annual audit was also sent to ALDOT and FTA as required. MPO Staff scheduled all MPO, TCC, and CAC meetings for the 2015 year.

Proposed Work: The City of Montgomery will continue to manage the transportation planning process. The MPO planning staff will prepare and submit administrative work related to documents required by state and federal agencies, as needed, such as meeting memos, agendas, minutes, correspondence, financial information, resolutions and etc. Equipment, software, and supplies will be purchased as needed for administrative work. MPO staff will attend training, workshops and conferences as needed to further the objectives of the planning process. MPO staff will schedule all MPO, TCC and CAC meetings within a timely fashion to handle MPO business. MPO staff will hold staff meetings twice a month to discuss all MPO activity and work products. MPO staff will assist auditors with annual audit and send the report to ALDOT and FTA as required. MPO staff will assist in any administrative function that is not scheduled as needed and required. The Montgomery MPO will follow and abide by forthcoming performance measures/management approach requirements.

Product: An efficient and continuous transportation planning process that is in compliance with all state and federal regulations and guidelines administratively. Maintain and do the following administrative tasks:

- Invoices
- Semi-annual progress reports with financial status of each task
- Monthly invoices
- Administrative reports, as needed
- Meeting information, distributed as needed

Staffing: The MPO Planning Staff

Schedule/Timeline: None

Financial Responsibility:

<u>Source of Funds</u>	<u>FY-2016</u>
PL (FHWA)	\$ 64,664
LOCAL MATCH	\$ 16,166
SPR	\$175,000
STATE MATCH	\$ 43,750
Total Cost	\$299,580

SUBTASK 1.2: Continuity of Operations Plan (COOP)

Objectives: To maintain and update the Continuity of Operations Plan (COOP), to be implemented, as needed, in the event of a natural or man-made disaster as needed.

Previous Work: The MPO Planning Staff, housed in the City of Montgomery Transportation Planning Division, has managed the transportation planning process for over 30 years. MPO Staff prepared the COOP with MPO and Advisory committee knowledge and involvement. The COOP was approved on July 6, 2006.

Proposed Work: The MPO Planning Staff will proactively maintain and update the COOP, as necessary.

Products: A Continuity of Operations Plan that is updated as needed.

Staffing: MPO Planning Staff

Schedule/Timeline: None

Financial Responsibility:

<u>Source of Funds</u>	<u>FY-2016</u>
------------------------	----------------

PL (FHWA)	\$	400
LOCAL MATCH	\$	<u>100</u>
Total Cost	\$	500

UPWP TASK 2
UNIFIED PLANNING WORK PROGRAM

TASK 2.1: UNIFIED PLANNING WORK PROGRAM

Objectives: To develop, update, and maintain the Unified Planning Work Program (UPWP) for FY-2016 and amend as needed and necessary, and prepare a draft and final FY 2017 UPWP. The goal of the UPWP is to serve as a guide for all transportation planning activity of the MPO and MPO staff by task for a given fiscal year. Other objectives of the UPWP are to coordinate and consult with other appropriate agencies regarding transportation planning efforts, engage and notify the public about transportation planning and related activity, and manage the transportation planning process budget.

Previous Work: The MPO staff prepared the draft and final FY 2015 UPWP and managed the document during the fiscal year. The MPO Staff circulated the draft and final document to the general public for review and comment and further circulated the document to the MPO, TCC, and CAC for comment before final approval. MPO staff also prepared a draft FY 2015 UPWP public involvement summary. The MPO staff coordinated and consulted with state, federal, and local government agencies, private entities, and the general public regarding transportation planning activities for FY 2015. The MPO staff monitored and managed the FY 2015 UPWP budget to ensure that the budget was managed properly.

Proposed Work: The MPO staff manages the FY 2016 UPWP during the fiscal year. The MPO Staff will coordinate and consult state, federal and local government agencies, private entities, and the general public regarding transportation planning activities for FY 2016. The MPO Staff will prepare a draft and final FY 2017 UPWP for MPO, TCC, and CAC approval, as well as solicit public comment. MPO Staff will also prepare a public involvement summary in order to document public involvement efforts for UPWP document. The Montgomery MPO will follow and abide by forthcoming performance measures/management approach requirements.

Product: Draft and Final FY 2017 UPWP.

Staffing: The MPO Planning Staff

Schedule/Timeline: A draft 2017 UPWP will be prepared in May-July 2016, and a final 2017 UPWP will be approved in August or September 2016.

Financial Responsibility:

<u>Source of Funds</u>	<u>FY-2015</u>
PL (FHWA)	\$ 15,587

Local Match	<u>\$ 3,897</u>
Total	\$ 19,484

UPWP TASK 3

GIS DATA COLLECTION AND ANALYSIS

SUBTASK 3.1: GIS DATA COLLECTION AND ANALYSIS

Objectives: To develop, update, and maintain a computer network consisting of hardware, software, and electronic data. The purpose of this network is to provide a basis whereby data and mapping needs are provided for the following types of transportation planning functions:

- | | |
|---|-----------------------------|
| -Transportation Improvement Program | -Public Service |
| -Transportation Planning Analysis | -Congestion Management |
| -Impact Assessment | -Technical Transit Planning |
| -Long Range Transportation Plan updates | -Transit Planning |
| -Environmental Justice Analysis | -Land Use and Demographics |
| -Bicycle Planning | -Pedestrian System Planning |
| -Air Quality Analysis | |

Previous Work: The MPO staff maintained up-to-date traffic count data from ALDOT using GIS software for prior year AADT data as sent from ALDOT. MPO staff also updated the functionally classified network; modified traffic analysis zones; updated and corrected socioeconomic data for the 2035 LRTP; updated transit map features and database with most recent bus bench and shelter locations; prepared maps by special requests from the general public, other public and private agencies, consultants; updated transit fixed bus route database and maps; and prepared project location maps for the TIP document and for all meetings in FY-2015 as well as GIS related work for all MPO related documents and services. MPO staff collected and distributed Census 2010 data.

Proposed Work:

- Hardware: Acquire new hardware and upgrade system hardware components as needed to stay up-to-date with latest computer hardware.
- Software: Acquire new software as needed to upgrade system capabilities as needed to stay up-to-date with latest computer software.
- Electronic Data: Continue to acquire and maintain current data sources from agencies such as City of Montgomery, ALDOT, Census Bureau, Water Works, Traffic Engineering, and Autauga, Elmore, and Montgomery Counties (to include the municipalities within the aforementioned counties) and from commercial sources, such as InfoUSA and various other data sources.
- Traffic Analysis Zones (TAZ) and Boundaries: Continue to monitor TAZs and the MPO Boundaries for needed changes and make changes as needed.

- MPO Staff will attend training, workshops and conferences as needed.
- Do work related to the MPO Transportation Planning Process and related to all USDOT Federal agency work where GIS is needed and required for visualization.

- Update, confirm, and analyze employment data.

The MPO will collect, prepare, and present *Livability Indicator* data as required on p.4. This work task is in response to an FHWA directive to the Department on May 2nd, 2012. The collected data will be presented in the following planning documents: Long Range or Regional Plan, Transportation Improvement Program, Public Participation Plan, Congestion Management Plan (TMAs only), and the Air Quality Conformity Report (as applicable). The data to be provided include:

- 1) Percent of jobs and housing located within one-half (1/2) mile of transit service
- 2) Percent of household income spent on housing and transportation
- 3) Percent of workforce living within a thirty (30) minute or less commute from primary job centers
- 4) Percent of transportation investment dedicated to enhancing accessibility of existing transportation systems
- 5) Percent of transportation projects where more than one federal funding source is utilized
- 6) Percent of housing located in walkable neighborhoods with mixed use destinations located nearby

Products: A GIS database of files that provides geographic information on all variables used in the development of transportation plans and programs and for other uses. Up-to-date GIS data, hardware and software, and training on all software and hardware used in the transportation planning process for the Montgomery MPO area. A GIS-knowledgeable and proficient MPO Planning staff, as it relates to computer training and implementation for transportation planning and document preparation.

Staffing: The MPO Planning Staff

Schedule/Timeline: None

Financial Responsibility:

<u>Source of Funds</u>	<u>FY-2016</u>
PL (FHWA)	\$ 66,405
Local Match	<u>\$ 16,601</u>
Total	\$ 83,006

SUBTASK 3.2: PREPARATION OF EMISSIONS ESTIMATES USING MOVES2010 SOFTWARE

Objectives: To compile emissions data for the purpose of developing a regional emissions or air quality model for the purpose of determining air quality conformity or non-conformity. Emissions data, such as socioeconomic data, land use data, transportation network/system characteristics, fleet and fuel data, meteorology data, vehicle fleet activity, and emissions factors, will be collected for the purpose of determining the on-road emissions from vehicles using the air quality model MOVES2014.

Previous Work: The MPO staff started collecting vehicle characteristics in the MPO area from the Department of Motor Vehicles.

Proposed Work: MPO staff will continue to collect emissions data, such as socioeconomic data, land use data, transportation network/system characteristics, fleet and fuel data, meteorology data, vehicle fleet activity, and emissions factors from various sources, until the work is completed. MPO staff will attend training, workshops, and conferences as needed, as related to emissions data collection.

Products: An up-to-date MPO planning staff as it relates to emissions data collection techniques. A complete emissions dataset for the purpose of air quality modeling is a proposed product.

Staffing: The MPO planning staff

Schedule/Timeline: None

Financial Responsibility:

<u>Source of Funds</u>	<u>FY-2016</u>
PL (FHWA)	\$ 400
Local Match	\$ 100
Total	\$ 500

UPWP TASK 4 **PUBLIC INVOLVEMENT**

SUBTASK 4.1: GENERAL PUBLIC INVOLVEMENT

Objectives: To involve all interested citizens in the Montgomery MPO study area in the transportation planning process. To give all citizens an opportunity to voice their concerns, preferences, and questions concerning transportation projects and plans. To provide transportation-relevant data to individuals, corporations, and agencies that have contact with groups or people that may be adversely impacted. To inform the public of the availability of transportation data; resources; MPO, TCC, and CAC meetings; and public involvement meetings; as needed and required.

Previous Work:

- The MPO staff followed the adopted 2013 Public Participation Plan for all MPO activities during FY 2015.
- Plans and programs considered by the MPO have been advertised for either a 7 or 14 day public involvement period prior to final consideration by the MPO.
- The MPO's 2013 PPP was updated and adopted in February 2013.
- Work was done to add additional persons to the transportation mailing list.
- The MPO Staff continued to use email as a notification method for MPO, TCC, and CAC meetings in FY 2015, along with regular U.S. Mail service for those with out email capability.
- The notification of the public concerning MPO, TCC, and CAC meetings, along with other public meeting opportunities, were advertised as "Public Notices" in local general circulation newspapers or sent to the transportation mailing list via email, and U.S. Mail.

Proposed Work:

- Notify the general public about the transportation process and other related elements, through local general circulation newspapers, email, personal contact, and postal mail.
- Public involvement for all meetings and documents, as required.
- Prepare public involvement summaries for all transportation planning documents.
- Public involvement materials will be distributed to MPO, TCC, and CAC members for review.
- All required documents will be sent to designated document review sites as described in the 2013 PPP.
- MPO staff will attend training, workshops, and conferences as needed.
- The Montgomery MPO will follow and abide by forthcoming performance measures/management approach requirements.

The MPO will present the following Livability Indicator data as required on p.4. The data will be displayed as percentages in charts, tables, or maps.

Place MPO information and documents on the Montgomery MPO website, located at <http://www.montgomerympo.org> for public review, comment and consumption.

Product: The product is a continuous, cooperative, and comprehensive (3-C) transportation planning process that involves the general public during, and after, final decision-making. A well-trained and well-versed MPO staff for the purpose of handling inquiries from the general public.

Staffing: The MPO Planning Staff and Alabama Department of Transportation

Schedule/Timeline: None

Financial Responsibility:

<u>Source of Funds</u>	<u>FY-2016</u>
PL (FHWA)	\$47,404
Local Match	<u>\$11,851</u>
Total Cost	\$ 59,255

SUBTASK 4.2: ENVIRONMENTAL JUSTICE PLANNING AND EVALUATION

Objective: To ensure that no plans, programs, or specific projects disproportionately and adversely impact low income or minority populations, and to ensure that the process of planning transportation improvements is structured to include the groups and/or agencies that normally represent their interests and concerns. Furthermore, outreach will be undertaken to involve members of low income and minority populations in the transportation planning process to the extent possible.

Previous Work: The MPO planning staff routinely scheduled, advertised, and held public involvement meetings in locations that were accessible to low income and minority populations and solicited comments and concerns from agencies and groups known to represent low income and minority populations. A summary document detailing public involvement meetings and comments received from citizens at public involvement meetings was routinely prepared. The MPO planning staff has mapped low income and minority areas for use in all planning efforts. MPO Staff prepared an annual ALDOT Title VI report and submitted to ALDOT as required.

MPO staff prepared an environmental justice/equity report for a 2040 LRTP update document. The MPO staff advertised transportation planning-related information, in general circulation media, in order to notify minority and low

income populations about plans, programs, and projects in the MPO Study Area. Also, persons that wanted to be notified about MPO activities were notified via the mailing and email distribution list.

Proposed Work: The MPO planning staff will continue to collect socioeconomic data relating to low income and minority populations. MPO staff will continue to notify minority and low income populations via general circulation newspapers and other available media about MPO and related meetings and correspondence. MPO staff will screen all transportation projects for the TIP to identify locations where low income and minority populations reside or own businesses, to ensure that the affected population does not receive a disproportionate amount of the burden from transportation projects, but does receive equal benefits or burdens from transportation projects. MPO staff will attend training, workshops, and conferences as needed. MPO staff will prepare an environmental justice/equity analysis for proposed 2016-2019 TIP projects.

Products: A transportation planning process that considers the needs of Environmental Justice populations, and involves low income and minority populations in all aspects of projects, from project development to the end of a finished project. A transportation planning process that mitigates problems produced from plans and projects so that any adverse impacts to low income and minority populations are minimized, eradicated. A well-trained and well-versed staff for the purpose of handling Environmental Justice inquires.

Staffing: The MPO Planning staff

Schedule/Timeline: None

Financial Responsibility:

<u>Source of Funds</u>	<u>FY-2016</u>
PL (FHWA)	\$ 8,000
Local Match	<u>\$ 2,000</u>
Total Cost	\$10,000

SUBTASK 4.3: PUBLIC INVOLVEMENT FOR AIR QUALITY CONFORMITY

Objectives: To involve all interested citizens in the Montgomery MPO study area in the air quality conformity planning process. To give all citizens an opportunity to voice their concerns, preferences, and questions concerning air quality conformity. To provide transportation-relevant data as related to air quality conformity to individuals, corporations, and agencies that have contact with groups or people that may be adversely impacted. To inform the public of the availability of air quality conformity data and information as needed, required, or on demand.

Previous Work: No work has been done for public involvement as related to air quality conformity in the MPO study area. The MPO study area is in attainment status for air quality as of June 2015.

Proposed Work: Notify the general public about the air quality conformity process as related to transportation plans and programs if the Montgomery study area goes into non-attainment for air quality, through local, general circulation newspapers, email, personal contact and postal mail. Do public involvement for all meetings and documents related to air quality conformity as required. Prepare public involvement summaries for all transportation planning documents to demonstrate air quality conformity. Distribute public involvement materials, summaries, and other materials to MPO, TCC, and CAC members for review. Send all required documents to designated document review sites as described in the public involvement plan, and collect all information once public process has been completed. MPO staff will attend training, workshops, and conferences as needed. Talk to the general public as needed and on demand. The proposed work will be done only if the Montgomery MPO study area is declared non-attainment for air quality only. Measures to improve air quality while still using transportation resources will continue to be advocated by MPO staff.

Place MPO air quality conformity information and documents on the Montgomery MPO website, at <http://www.montgomerympo.org>, for public review and comment.

Product: The product is a continuous, cooperative, and comprehensive (3-C) transportation planning process that involves the general public during, and after, final decision-making. A well-trained and well-versed staff.

Staffing: The MPO Planning Staff and Alabama Department of Transportation

Schedule/Timeline: Update Fall 2015/Spring 2016

Financial Responsibility:

<u>Source of Funds</u>	<u>FY-2016</u>
PL (FHWA)	\$ 800
Local Match	\$ 200
Total Cost	\$ 1,000

UPWP TASK 5 **TRANSPORTATION SYSTEMS**

SUBTASK 5.1: LONG RANGE TRANSPORTATION PLAN (LRTP)

Objectives: To maintain and update the Long Range Transportation Plan (LRTP) and other related documents for the Montgomery Study Area every five years and as needed. Continue to collect socioeconomic data and other information for the 2040 LRTP in preparation for the update in 2015.

Previous Work: Transportation planning software, TRANPLAN/CUBE model software, Citilabs Cube Voyager software was used to develop a base year 2010 and 2040 transportation network. MPO staff attended quarterly travel demand model refresher training at the ALDOT computer training facility. MPO staff attended various other internet training on travel demand model and transportation planning work aspects. Work was continued and a Final 2040 LRTP was adopted by September 2015.

Proposed Work: CUBE Voyager software will be used for the 2040 *Long Range Transportation Plan* and the Plan amended as needed. Amendments may be done for the 2040 LRTP using CUBE Voyager software. Work will start by using the transportation planning computer travel demand model in order to calibrate, validate the 2010 base year, and forecast to the year 2040. New TAZs will be delineated, as needed.

The LRTP must be updated every five years. Work on the 2040 LRTP will be done in FY-2016 as needed. MPO Staff will attend quarterly travel demand model refresher training at the ALDOT computer training facility. MPO Staff will attend other training, workshops, and conferences as needed. The Montgomery MPO will follow and abide by forthcoming performance measures/management approach requirements.

The MPO will prepare and present the *Livability Indicator* data as required on p.4. The data will be displayed in the Plan as percentages in charts, tables, or maps.

Products:

- The MPO will maintain the 2040 LRTP and amend as needed.
- The model will be continually updated for use in the regional analysis of the transportation system and for documenting projected traffic volumes that will support transportation infrastructure decisions and other economic and social development work.

Staffing: The MPO Planning Staff and the Alabama Department of Transportation.

Schedule/Timeline: N/A

Financial Responsibility:

<u>Source of Funds</u>	<u>FY-2016</u>
PL (FHWA)	\$ 18,400
LOCAL MATCH	\$ 4,600
Total Cost	\$ 23,000

SUBTASK 5.1.1: LRTP AIR QUALITY CONFORMITY REPORT PREPARATION

Objectives: The purpose of this subtask is for the preparation of documents, required in 23 CFR 450.102 for air quality conformity purposes, that might be required if Montgomery MPO area is designated in non-compliance for ozone air quality or fine particulate matter. This subtask establishes definition, scope, and procedures for conformity compliance of the Clean Air Act.

Previous Work: In FY-2015, MPO staff monitored current air quality readings and other related information for compliance with FY-2013 air quality standards in the Montgomery MPO area, as presented by the Alabama Department of Environmental Management (ADEM) and the Environmental Protection Agency (EPA). MPO staff attended a training workshop on new air quality regulations and received information of possible non-attainment and conformity requirements.

Proposed Work: If required, MPO Staff will amend the 2040 LRTP in order to comply with Air Quality Conformity Determination requirements and comply with other federal and state requirements as pertaining to air quality and transportation project justification for conformity determination. This task will produce the *Air Quality Conformity Report* for the City of Montgomery and counties of Autauga, Elmore, and Montgomery in Alabama – Project Listings Only.

The MPO will prepare and present the Livability Indicator data as required on p.4. The data will be displayed as percentages in charts, tables, or maps.

Products: If required, MPO staff will produce all necessary documents for air quality conformity.

Staffing: The MPO planning staff and the Alabama Department of Transportation

Schedule/Timeline: Subject to NAAQS update Fall 2015/Spring 2016

Financial Responsibility:

<u>Source of Funds</u>	<u>FY-2016</u>
PL (FHWA)	\$ 1,600

LOCAL MATCH	\$	400
Total Cost	\$	2,000

SUBTASK 5.1.2: AMENDED LRTP PROJECT LISTINGS FOR AIR QUALITY CONFORMITY

Objectives: The purpose of this subtask is for the amending of documents required in 23 CFR 450.102 for air quality conformity purposes that might be required if Montgomery MPO area goes into non-compliance for ozone air quality or fine particulate matter. This subtask establishes definition, scope, and procedures for conformity compliance of the Clean Air Act.

Previous Work: MPO Staff attended and participated in a kick-off meeting for transportation conformity on new air quality regulations and received information of possible non-attainment and conformity requirements.

Proposed Work: If required, MPO staff will amend the 2040 LRTP in order to comply with Air Quality Conformity Determination requirements and comply with other federal and state requirements as pertaining to air quality and transportation project justification for conformity determination. This task will produce an amended 2040 LRTP for air quality conformity purposes, if needed.

Products: If required, MPO Staff will amend the 2040 LRTP for air quality conformity requirements.

Staffing: The MPO Planning Staff

Schedule/Timeline: Subject to NAAQS proposal Fall 2015

Financial Responsibility:

<u>Source of Funds</u>	<u>FY-2016</u>
PL (FHWA)	\$ 400
LOCAL MATCH	\$ 100
Total Cost	\$ 500

SUBTASK 5.2: TRANSPORTATION IMPROVEMENT PROGRAM (TIP)

Objectives: To identify transportation improvement projects recommended for advancement during the program period as a result of the cooperative, continuous, and comprehensive (3-C) transportation planning process; and to include realistic estimates of revenues and costs for each project, as well as be financially constrained. Development of the TIP based on projects taken from the Long Range Transportation Plan with other maintenance needs for all jurisdictions within MPO Study Area into a single, phased, implementation schedule. All of the MAP-21 factors will be used in the development of the TIP. Efforts to increase public involvement in the planning process will be made.

Previous Work: The MPO Staff has managed the TIP for over 30 years. The 2012-2015 TIP has been amended numerous times (62 projects) the past. The TIP database has also been updated and maintained periodically based on ALDOT reports and sponsor information received. The Alabama Department of Transportation and MPO jurisdictions have established projects based on their short range and long-range needs. A draft FY 2016-2019 TIP was prepared by the MPO. A list of authorized transportation projects for FY-2015 (Previous Year) will be prepared and published in the new TIP as required.

Proposed Work: The MPO planning staff will work with MPO committees, ALDOT, local jurisdictions, and the general public to prepare a TIP every four years. Progress on the TIP will be monitored, and the TIP will be amended as needed. A TIP database will be maintained, and a list of projects that were authorized in the previous fiscal year will be published. All TIP amendments will be put on the MPO website. MPO Staff will attend training, workshops, and conferences as needed. The Montgomery MPO will follow and abide by forthcoming performance measures/management approach requirements. The FY-2012-2015 TIP will be maintained and updated as needed and required.

The MPO will prepare and present the Livability Indicator data as required on p.4. The data will be displayed as percentages in charts, tables, or maps.

Product: The FY 2016 -19 TIP will be amended as needed.

Staffing: MPO Planning Staff and the Alabama Department of Transportation

Schedule/Timeline: None

Financial Responsibility:

<u>Source of Funds</u>	<u>FY-2016</u>
PL (FHWA)	\$ 56,301
LOCAL MATCH	\$ 14,075
Total Cost	\$ 70,376

SUBTASK 5.2.1: AMENDED TIP PROJECT LISTINGS FOR AIR QUALITY CONFORMITY

Objectives: The purpose of this subtask is for the preparation of documents required under 23 CFR 450.102 for air quality conformity purposes that might be required if Montgomery MPO area goes into non-compliance for ozone air quality or fine particulate matter. This subtask establishes definition, scope, and procedures for conformity compliance of the Clean Air Act.

Previous Work: In FY-2015 MPO staff monitored current air quality readings and other related information for compliance with FY-2009 and FY-2010 air quality standards in the Montgomery MPO area, as presented by the Alabama

Department of Environmental Management (ADEM) and the Environmental Protection Agency (EPA).

Proposed Work: If required, MPO Staff will amend the existing 2016-2019 TIP in order to comply with Air Quality Conformity Determination requirements, if found in non-compliance. This task will provide amended project listings for the TIP, subject to the schedule and requirements of the NAAQS announcement in 2015, designation in 2017.

Products: If required, MPO Staff will produce all documents required for air quality conformity. This task will produce the amended Transportation Improvement Program (TIP) for the City of Montgomery and the counties of Autauga, Elmore, and Montgomery in Alabama – Project Listings only.

Staffing: The MPO Planning Staff and the Alabama Department of Transportation

Schedule/Timeline: Subject to NAAQS proposal Fall 2015

Financial Responsibility:

<u>Source of Funds</u>	<u>FY-2015</u>
PL (FHWA)	\$ 2,400
LOCAL MATCH	\$ 600
Total Cost	\$ 3,000

SUBTASK 5.3: TRANSIT PLANNING AND ADMINISTRATION

Objective: To perform transit planning and related administration work

Previous Work: MPO staff has used GIS software for various transit related projects. MPO staff used GIS to update, maintain, and prepare digital mapping products for Montgomery Area Transit System (MATS) citywide fixed bus routes and other transit-related projects in the area. The current MATS fixed-routes have been saved in digital format and uploaded onto the Montgomery Area Transit website (www.montgomerytransit.com).

The MPO staff prepared and submitted FTA grants for the City of Montgomery and the Montgomery Area Transit System (MATS) for the capital and operating grants. Public involvement meetings discussing the proposed grant applications were held and conducted by MPO staff. MPO staff has also completed work on the National Transit Database (NTD) report for MATS for the current reporting year. Staff also attended FTA training via internet webinars.

MPO staff has also used GIS and socioeconomic data to analyze the transit system routes as part of the 2040 LRTP to see where future improvements needed to be focused.

Proposed Work: MPO Staff will continue to assist MATS staff with the implementation of the TDP in FY-2016. GIS software will be used as appropriate to support transit planning activities and services. MPO staff will assist MATS staff with managing federal transit funding and provide technical assistance and support as needed.

MPO staff will continue to prepare Federal Transit Administration (FTA) products as needed to include: capital and operating grants, National Transit Database reports, and other reports and activities as required. MPO staff will prepare and assist MATS staff in the preparation of public involvement activities. MPO staff will attend training, workshops, and conferences as needed to assist in MATS operation.

MPO staff will do work related to alternatives analysis for the City of Montgomery and Montgomery Transportation Management Area, to include applying for federal grants to conduct alternatives analyses (bus rapid transit, commuter light rail, and streetcar circulator rail), and ,if successful, hiring consultants to perform work related to the projects. MPO staff will attend training, workshops, conferences, and meetings related to passenger rail planning. The Montgomery MPO will follow and abide by forthcoming performance measures/management approach requirements.

Products: An updated and maintained *Montgomery Urbanized Area Transit Development Plan* for 2016-2020. A transit system that meets the needs of Montgomery Area Transit System riders, the City of Montgomery, and also meets all federal and state requirements. An updated and maintained GIS database with fixed transit routes, bus benches, bus shelters, bus stop signs, and other related transit amenities. Up-to-date reports, grant applications, and other items as needed. A completed survey of the MATS for travel demand modeling purposes, as well as public involvement assistance as needed.

Continuous funding from the Federal Transit System grants and completed National Transit Database reports. Equipment, software, and hardware that is up-to-date. A well trained and well versed staff.

Staffing: The MPO Planning Staff, Montgomery Area Transit System, Alabama Department of Transportation, Federal Transit Administration, and Federal Railroad Administration

Schedule/Timeline: Updated Transit Development Plan – Fall 2016

Financial Responsibility:

<u>Source of Funds</u>	<u>FY-2016</u>
Planning Funds (FHWA-PL)	\$57,784
Local Match	\$33,196

Consultant	<u>\$75,000</u>
Total Cost	\$165,980

FHWA PL and FTA 5303 funds have been combined into a single category.

MPOs may carry over funds for 3 years. The oldest unexpended funds will be returned to the funding pool for reallocation.

SUBTASK 5.4: DISADVANTAGED BUSINESS ENTERPRISE (DBE)

Objectives: To give full consideration to the potential services that can be provided by disadvantaged business enterprises (DBE) in carrying out the 3-C transportation planning process and any transportation/transit related programs. To meet all requirements of U.S. Code 49 CFR, part 26.

Previous Work: MPO staff has acquired a copy of the ALDOT certified list of DBEs by vendor and type of work performed in FY 2015. MPO staff attended an ALDOT sponsored DBE Conference to speak about DBE opportunities in local and state government, and met with DBE contractors to answer questions about contracting opportunities. MPO Staff has also prepared semi-annual DBE reports and prepared an annual DBE goal for FTA-assisted contracting opportunities.

Proposed Work: Efforts will be made to purchase goods and services through eligible DBE firms whenever possible. Prepare annual DBE goal, prepare semi-annual DBE reports, prepare Title VI report, and monitor activity, as required. MPO Staff will attend training, workshops, and conferences as needed.

Products: A program that utilizes DBE enterprises and contracts their services whenever possible. An up-to-date DBE list, DBE reports of awards and commitments, an annual DBE goal, and a current Title VI report.

Staffing: The Alabama Department of Transportation and the MPO Planning Staff

Schedule/Timeline: None

Financial Responsibility:

<u>Source of Funds</u>	<u>FY-2016</u>
Planning Funds (FHWA-PL)	\$ 1,600
Local Match	<u>\$ 400</u>
Total Cost	\$ 2,000

FHWA PL and FTA 5303 funds have been combined into a single category.

MPOs may carry over funds for 3 years. The oldest unexpended funds will be returned to the funding pool for reallocation.

SUBTASK 5.5: PARATRANSIT SERVICE FOR THE DISABLED

Objective: To provide cost effective, efficient paratransit service for disabled persons in the City of Montgomery.

Previous Work: MPO staff worked with the Mayor’s Advisory Committee for Improved Accessibility (MACIA) to insure that public transit, public buildings and sidewalks and curb-cuts were accessible and meets American with Disabilities Act (ADA) requirements. MPO staff met with the MACIA, as requested, for meetings regarding ADA issues.

Proposed Work: Public meetings and other outreach efforts will be conducted as needed. Continue to meet with MACIA, as requested, and assist in monitoring paratransit transportation for disabled persons; also identify ADA-related compliance issues, such doorway widths, needed sidewalk and curb-cut improvements, and overall accessibility for all disabled persons as related to MATS and the urbanized area. The MPO Staff will assist the MACIA with meetings and planning related issues as they relate to the mobility of persons with disabilities.

Product: Accessible transportation services for the disabled in the City of Montgomery-urbanized area.

Staffing: The MPO Planning Staff

Schedule/Timeline: None

Financial Responsibility:

<u>Source of Funds</u>	<u>FY-2016</u>
Planning Funds (FHWA-PL)	\$ 2,400
Local Match	\$ 600
Total Cost	\$ 3,000

FHWA PL and FTA 5303 funds have been combined into a single category.

MPOs may carry over funds for 3 years. The oldest unexpended funds will be returned to the funding pool for reallocation.

SUBTASK 5.6: CONGESTION MANAGEMENT

Objective: To provide effective management of new and existing transportation facilities through use of travel demand reduction and operational management strategies. Encourage bicycle and pedestrian and transit modes as appropriate. Pursue continued development of the Intelligent Transportation System (ITS) and strategies to reduce Single Occupancy Vehicle (SOV) travel. Come up with ways to effectively advocate and manage congestion overall, through adding capacity to highways, transit, freight, travel demand management program encouragement, and bicycle and pedestrian facilities, and manage congestion for better air quality.

Previous Work: MPO Staff and a consultant did work related to the 2040 LRTP update to compare travel demand model outputs to Congestion Management System Plan projects.

Travel demand model congestion levels for 2010 and 2040 were reviewed and analyzed. Data and maps have been transferred into GIS. MPO Staff has worked with City of Montgomery Traffic Engineering and City Information Technology Departments and Montgomery Area Transit System (MATS) to implement and develop the current and future ITS infrastructure and actual improvements.

The MPO staff also worked with MATS to implement the automatic vehicle locator system and paratransit scheduling software. MPO staff also prepared Federal Transit Administration (FTA) grant applications for the City of Montgomery ITS project.

MPO staff continued to work with the Alabama Department of Economic and Community Affairs (ADECA) energy division to continue to implement the CommuteSmart Montgomery program and assisted citizens with getting registered, and review marketing materials. A total of 415 people are registered in the CommuteSmart Montgomery program, as of May FY-2015.

Proposed Work: Continue to implement and monitor the Congestion Management System Plan (CMSP) addressing the specific needs of the MPO study area with transportation project solutions. The MPO planning staff will continue to work with local, federal, and state officials to further implement ITS projects as needed.

Low cost congestion-relief projects that eliminate bottlenecks will continue to be a focus, along with better access management, by coordinating land use and transportation planning, and coming up with ways to effectively advocate and manage congestion overall, by adding capacity to highways, mass transit (bus and rail), freight (water, rail and truck), and bicycle and pedestrian facilities. Also, transportation demand management strategies will be explored. MPO staff will further market the CommuteSmart Montgomery program to maximize the number of people registered to the program. MPO staff will attend training, workshops, and conferences as needed. The Montgomery MPO will follow and abide by forthcoming performance measures/management approach requirements.

The MPO will prepare and present the Livability Indicator data as required on p.4. The data will be displayed as percentages in charts, tables, or maps.

Products:

- Mitigation or management of congestion on the existing facilities and prevention of congestion on existing and future facilities.
- Development of an ITS that conforms to the national ITS architecture.

- Strategies that reduce congestion as well as a well-trained and well-versed staff.

Staffing: The MPO Staff and the Alabama Department of Transportation

Schedule/Timeline: None

Financial Responsibility:

<u>Source of Funds</u>	<u>FY 2016</u>
Planning Funds (FHWA-PL)	\$ 4,000
Local Match	\$ 1,000
Total Cost	\$ 5,000

SUBTASK 5.7: SAFETY PLANNING AND MONITORING

Objective: To continue to conduct transportation safety planning as part of the MPO planning process, to include all documents produced. This includes identification of areas that have unacceptably high accident numbers. This may also include intersections and areas with non-standard road alignment, lane widths, pedestrian crossing areas, bicycle issues, transit-related safety problems, and truck issues.

An assessment of appropriate solutions to mitigate these problems will occur. A further objective is to identify potential safety risks that may arise as the result of acts of terrorism and to develop countermeasures to prevent unacceptable safety risks to the traveling public and components of the transportation facilities and systems.

Previous Work: The MPO planning staff collected accident data from the Critical Analysis and Reporting Environment (CARE) system for FY-2015 and traffic counts. All accident and traffic count data were input into a GIS database and used as a part of all planning and programming processes.

Proposed Work: The MPO planning staff will work to identify projects throughout the Study Area through the CMSP and LRTP documents that will reduce congestion and improve safety. MPO staff will continue to work with local, state, and federal agencies in implementing ITS projects. MPO staff will work to get all CMSP and LRTP safety and ITS projects into the TIP for implementation. MPO staff will attend training, workshops, and conferences as needed.

Products: Updates to the *Congestion Management System Plan* and Long Range Transportation Plan as needed. Consideration of freight safety, highway safety, transit safety, bicycle and pedestrian safety, and security in the transportation planning process will also be a product to be achieved.

Staffing: The MPO Planning Staff and the Alabama Department of Transportation

Schedule/Timeline: None

Financial Responsibility:

<u>Source of Funds</u>	<u>FY 2016</u>
Planning Funds (FHWA-PL)	\$ 4,000
Local Match	\$ 1,000
Total Cost	\$ 5,000

SUBTASK 5.8: SPECIAL PROJECTS, CORRIDOR DEVELOPMENT AND DEVELOPMENTS OF REGIONAL IMPACT (DRI)

Objectives: Analysis to assess the impacts of projects of regional significance, such as toll bridges, new major travel routes special projects, and developments of regional impact as needed.

Previous Work: Citilabs CUBE Voyager has been used to assess the impacts of proposed new roads and new developments within the MPO study area. Currently, the planning staff is using CUBE Voyager for modeling. ArcGIS/ArcView, a geographic information system (GIS) tool, was used to spatially depict and analyze data used in transportation planning.

Proposed Work: Studies of major developments, as well as proposed new roads and other special projects, will be conducted to determine if the proposed improvements are justified. GIS-based studies of the effects of projects on critical populations will be routinely conducted as new transportation projects are identified or proposed. MPO staff will attend training, workshops, and conferences as needed.

Products: Recommendations will be made on improvements to the road system throughout the MPO study area for congestion relief and mitigation of development impacts. Recommendations will include environmental justice analyses and community impact assessments, where appropriate.

Staffing: The MPO Planning Staff and the Alabama Department of Transportation

Schedule/Timeline: None

Financial Responsibility:

<u>Source of Funds</u>	<u>FY 2016</u>
Planning Funds (FHWA-PL)	\$ 4,000
Local Match	\$ 1,000

Total Cost **\$ 5,000**

SUBTASK 5.9: INTERMODAL AND FREIGHT PLANNING

Objectives: The MPO planning staff will consider and do intermodal planning, as appropriate, for the Study Area and during the LRTP update process.

Previous Work: The MPO staff has assisted the Montgomery Regional Airport in the planning efforts for its intermodal facility improvements. MPO staff also worked with consultants on an advisory group doing work on the State of Alabama Freight Study and action plan. MPO staff also collected and analyzed all freight data for use in the 2040 LRTP update. MPO staff attended various Airport Authority meetings related to the Airport intermodal facility project. The MPO staff also prepared FTA airport intermodal grant quarterly reports related to and processed invoices for payment to the planning and engineering consultant and contractor doing work on the project. MPO staff also attended training webinars on freight planning.

Proposed Work: The MPO staff will continue to work with the consultants doing the 2016 Alabama Freight Plan. MPO staff will also do freight planning work in the 2045 LRTP update as part of the needs assessment process and recommendation process. MPO staff will also collect freight information for planning purposes. MPO staff will attend training and workshops related to freight.

Products: An inventory of intermodal facilities in the area and strategies to develop and improve the facilities and access to them. An intermodal transportation system that connects all or some transportation modes efficiently.

Staffing: The MPO planning staff

Schedule/Timeline: None

Financial Responsibility:

<u>Source of Funds</u>	<u>FY 2016</u>
Planning Funds (FHWA-PL)	\$ 3,600
Local Match	<u>\$ 900</u>
Total Cost	\$ 4,500

SUBTASK 5.10: BICYCLE AND PEDESTRIAN PLANNING

Objective: To encourage bicycle and pedestrian modes through the improvement and implementation of the *Montgomery MPO Bicycle and Pedestrian Plan*, with integration into the *Long Range Transportation Plan and the Transportation Improvement Program*.

Previous Work: Various pedestrian transportation projects as part of highway improvements or stand-alone projects were processed for inclusion and implementation into the TIP. MPO staff also completed collection of existing pedestrian facilities for the 2040 LRTP and update of the Bicycle and Pedestrian Plan update in FY 2013. MPO staff also collected accident data related to pedestrians and vehicles for transportation planning purposes. MPO staff has completed the collection of pedestrian-related accident data and existing sidewalks along functionally classified roadways.

Proposed Work: MPO Planning Staff will continue to update the *Montgomery MPO Bicycle and Pedestrian Plan* as needed. MPO planning staff will assess the need for new bicycle and pedestrian facilities, such as signage, lanes, storage, sidewalks, pedestrian bridges, and tunnels, striping, and other items as needed, and include this assessment in a comprehensive bicycle and pedestrian plan document. MPO staff will attend training, workshops, and conferences as needed.

Products: An amended Montgomery MPO Bicycle and Pedestrian Plan.

Staffing: The MPO Planning Staff, the Alabama Department of Transportation with assistance and input/advice from the Alabama Department of Public Health, the Bicycle and Pedestrian Sub Committee, the Montgomery Bicycle Club, and the Elmore County Trail of Legends Association

Schedule/Timeline: None

Financial Responsibility:

<u>Source of Funds</u>	<u>FY 2016</u>
PL (FHWA)	\$ 16,000
Local Match	\$ 4,000
Total Cost	\$ 20,000

UPWP TASK 6
ENVIRONMENTAL MITIGATION AND STREAMLINING

SUBTASK 6.1: AIR QUALITY ANALYSIS, MONITORING, and PLANNING

Objectives: To monitor, analyze, and plan for better air quality in the Montgomery area as affected by the existing transportation system, industry, and residents and the forecasted travel demand on the long range transportation plan network.

Previous Work: Staff attended training meetings on air quality requirements and preparation in the Montgomery MPO area, as well as training on air quality conformity modeling software, MOVES.

Air quality information and data published by the Environmental Protection Agency (EPA) and Alabama Department of Environmental Management (ADEM), was received and reviewed in late FY 2010 by MPO staff for compliance with existing and proposed air quality rules. MPO staff attended air quality training in July 2010 in order to be prepared for implementation of the final air quality rules for 2012. MPO staff started collecting air quality model data in FY 2010.

Proposed Work: Information on air quality will continue to be collected, especially with reference to what other MPO areas throughout the state have done to eliminate problems. Measures that may be appropriate for the Montgomery Study Area will be studied based on changes in air quality status and other related factors, and implemented if feasible. Additionally, the MPO planning staff will monitor air quality reports, attend meetings, and accomplish other activities as appropriate and dictated based on air quality determination for the Montgomery MPO area.

MPO staff will continue collecting data related to the air quality model for implementation in 2016-17 if necessary. MPO staff will prepare emissions estimates using the MOVES air quality modeling software as needed and required. MPO staff will attend training, workshops, and conferences as needed.

Products: Continued work on air quality analysis model and air quality monitoring of the MPO area.

Staffing: The MPO Planning Staff, Alabama Department of Transportation, Alabama Department of Environmental Management, and Environmental Protection Agency

Schedule/Timeline: None

Financial Responsibility:

<u>Source of Funds</u>	<u>FY 2016</u>
Planning Funds (FHWA-PL)	\$ 800
Local Match	<u>\$ 200</u>
Total Cost	\$ 1,000

SUBTASK 6.2: CLIMATE CHANGE AND GREEN HOUSE GAS (GHG) EMISSIONS

Objectives: To utilize and integrate climate change information/data into the MPO transportation planning process in order to mitigate harmful man made impacts on the environment. To take appropriate steps to train MPO staff about climate change and green house gas emissions as related to transportation planning.

Previous Work: No previous work, no previous instructions or guidelines.

Proposed Work: The MPO planning staff will complete work/research as they are deemed necessary for transportation planning projects. MPO staff will attend training, workshops, and conferences as needed. MPO staff will become familiar with all federal government resources and publications regarding climate change and green house gas emissions. All MPO staff will become familiar with climate change and green house gas emissions to be able to communicate effectively with a diverse group of interests.

Products: Products dependent upon project assignment.

Staffing: The MPO Planning Staff, the Alabama Department of Transportation and Federal government personnel

Schedule/Timeline: None

Financial Responsibility:

<u>Source of Funds</u>	<u>FY 2016</u>
Planning Funds (FHWA-PL)	\$ 400
Local Match	<u>\$ 100</u>
Total Cost	\$ 500

APPENDICES

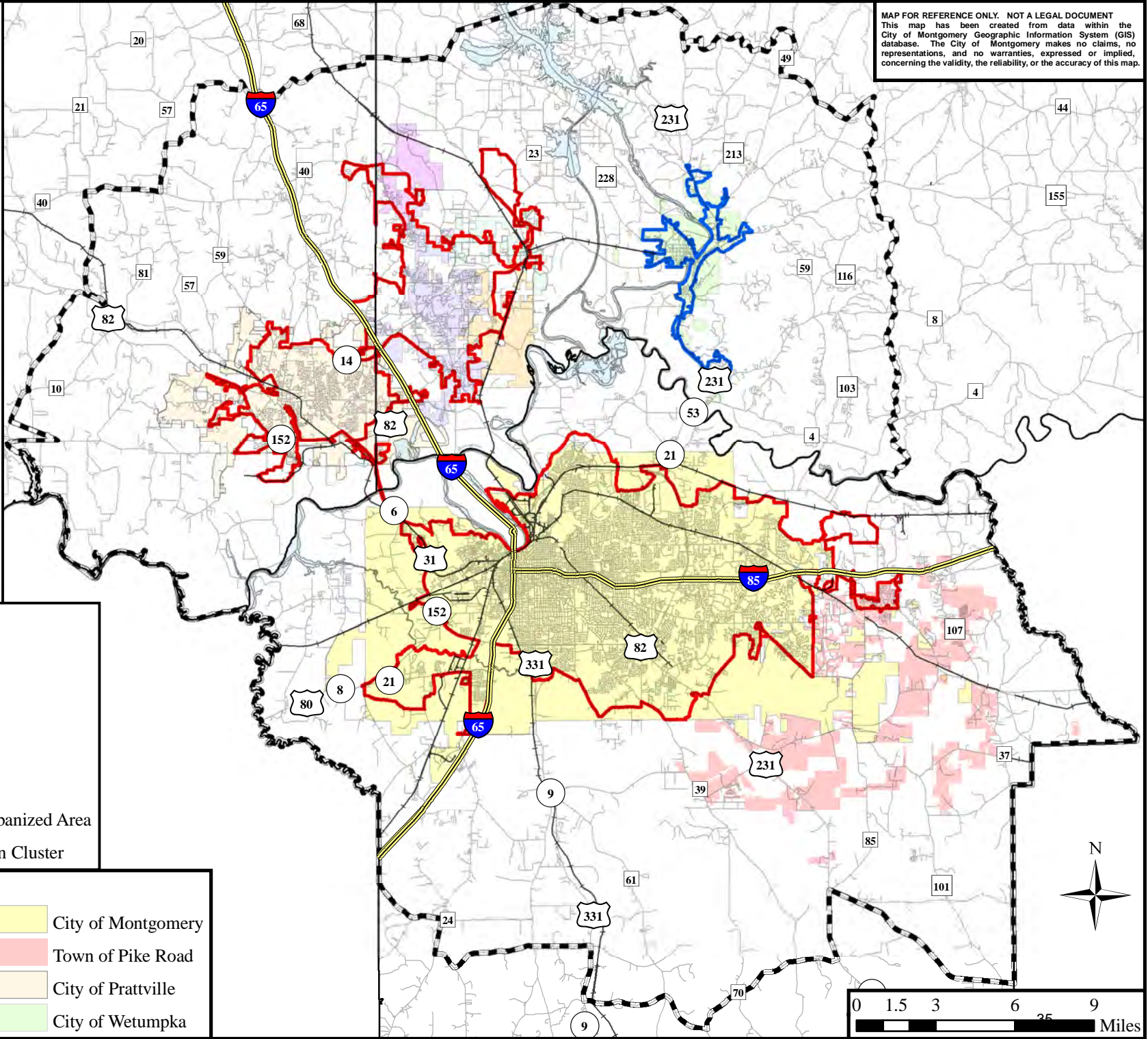


**Figure 1:
Montgomery MPO
Study Area and
2010 U.S. Census
Urbanized Area**

Source: 2010 U.S. Census,
City of Montgomery,
Town of Pike Road, City of
Prattville, and Elmore
County



MAP FOR REFERENCE ONLY. NOT A LEGAL DOCUMENT
This map has been created from data within the
City of Montgomery Geographic Information System (GIS)
database. The City of Montgomery makes no claims, no
representations, and no warranties, expressed or implied,
concerning the validity, the reliability, or the accuracy of this map.



Legend

- Interstate
- Roadways
- Railroads
- Rivers
- MPO Study Area
- Montgomery, AL Urbanized Area
- Wetumpka, AL Urban Cluster

Municipal Limits

City of Coosada	City of Montgomery
Town of Deatsville	Town of Pike Road
Town of Elmore	City of Prattville
City of Millbrook	City of Wetumpka

0 1.5 3 6 9
Miles

MPO ORGANIZATION

The Montgomery MPO process is carried out by the Metropolitan Planning Organization (MPO) Policy Board. The MPO has two advisory committees. **The MPO (Policy Board)** is the official decision making body of the process. The MPO Policy Board has two advisory committees and a professional transportation planning staff. The committees includes: **(1) The Technical Coordinating Committee (TCC)**, which coordinates and advises the MPO on technical matters of projects, plans, and programs, and **(2) The Citizens Advisory Committee (CAC)**, which advises the MPO on the general public's perspective on projects, plans, and programs. The MPO Staff manages the day to day operation of the MPO Transportation Planning Process.

The MPO has the ultimate authority on all transportation planning decisions, but the advisory committees and staff make recommendations to the MPO that shape the transportation planning process. The activities of the TCC, CAC, and MPO staff are governed by the MPO.

Metropolitan Planning Organization (MPO)

The MPO serves as the official decision-making body for the Montgomery Area Transportation Planning Process. The MPO oversees how federal transportation dollars are spent in the transportation study area. The MPO's responsibilities include the review and approval of all plans, programs, and projects, and regulating the TCC, CAC, and staff functions. The MPO is composed of twelve (12) voting members and six (6) non-voting members.

Metropolitan Planning Organization Members Include:

Voting Members:

Todd Strange – Mayor, City of Montgomery

William Gillespie – Mayor, City of Prattville

Charles Jinright – **Chairman**-City Councilman, City of Montgomery

Carl Johnson – County Commissioner, Autauga County Commission

George Conner – Southeast Region Engineer, Alabama Department of Transportation

Jerry Willis – **Vice-Chairman**, Mayor, City of Wetumpka

Connie Hand – Mayor, Town of Coosada

Al Kelley – Mayor, City of Millbrook

Cornelius Calhoun – Councilman, City of Montgomery

David Bowen – County Commissioner, Elmore County Commission

Elton Dean - Montgomery County Commission

Gordon Stone – Mayor, Town of Pike Road

Margaret White – Mayor, Town of Elmore

Clayton Edgar – Mayor, Town of Deatsville

Tracy Larkin – Councilman, City of Montgomery

Richard Bollinger – Councilman, City of Montgomery

Dan Harris – County Commissioner, Montgomery County Commission

Non-Voting Members:

Greg Clark – Executive Director, Central Alabama Regional Planning and Development Commission

Abigail Rivera – Transportation Program Specialist, Federal Transit Administration

Kelvin Miller – General Manager, Montgomery Area Transit System

Robert J. Jilla - Bureau Chief, Transportation Planning and Modal Programs, ALDOT
Director – Autauga County Rural Transit System

Mark D. Bartlett – Division Administrator, Federal Highway Administration

Ken Upchurch – City of Montgomery Planning Commission

Robert Smith – Director of Planning/MPO Administrator, City of Montgomery

Technical Coordinating Committee (TCC)

The Technical Coordinating Committee (TCC) provides technical advisory guidance to the MPO. The TCC reviews plans, programs, projects, studies, and reports, and provides the MPO with recommendations concerning them. The TCC also serves as a coordinating forum for all agencies involved in the transportation planning process. Participants on the TCC include municipalities, counties, the Alabama Department of Transportation, the Federal Highway Administration, Federal Transit Administration, and other selected transportation interests. The Technical Coordinating Committee is composed of twenty-eight (28) voting members and three (3) non-voting members. Technical Coordinating Committee Members Include:

Voting Members:

Terri Adams – Alabama Department of Economic and Community Affairs

Locke “Bubba” Bowden – Traffic Engineer, City of Montgomery

Clint Andrews – Planning Engineer Federal Highway Administration

David Bufkin – County Engineer, Autauga County

Elmore Town Clerk, Town of Elmore

Chris Christiansen – Montgomery Association for Retarded Citizens

Joel Duke, AICP – Director of Planning and Development, City of Prattville

W. Clayton Edgar – Mayor, Town of Deatsville

Jerry Peters – City Engineer, City of Millbrook

Chris Howard – Air Division Planning Branch, Alabama Department of Environmental Management

Greg Clark – Executive Director, Central Alabama Regional Planning and Development Commission

Robert Smith – Director of Planning/MPO Administrator, City of Montgomery

(Chairman)

Stuart Peters – Planner, Town of Coosada/City of Millbrook

John McCarthy – City Traffic Engineer III, City of Montgomery

Kelvin Miller – General Manager, Montgomery Area Transit System

Patrick Dunson – City Engineer, City of Montgomery

David Bollie – County Transportation Engineer, Alabama Department of Transportation

Brad Flowers – Engineer, Town of Pike Road

Director – Autauga County Rural Transit System

Tommy Tyson – Land Use Controls Administrator, City of Montgomery
David Robison –Planner, City of Wetumpka
George Speake– County Engineer, Montgomery County
Richie Beyer – Elmore County Engineer

Non-Voting Members:

Randy Stroup – Assistant Bureau Chief, Transportation and Modal Programs, ALDOT
Phil Perry – Executive Director, Montgomery Regional Airport
Alfedo Acoff - Coordinator Environmental Technical Section, Alabama Department of Transportation
Emmanuel Oranika – Metropolitan and Statewide Transportation Planning Administrator, Alabama DOT

Citizens Advisory Committee (CAC)

The Citizens Advisory Committee (CAC) is made of twenty-five (25) citizens from the Montgomery MPO Study Area and advises the MPO. The voting MPO members appoint CAC members. The CAC was established to help provide and encourage active citizen participation in the transportation planning process, and also to advise the MPO of the citizen's perspective on transportation planning plans, programs, and projects.

The Citizens Advisory Committee (CAC) Members Include:

James Brown, City of Montgomery, (Chairman)
Crews Reaves, City of Montgomery
Vacant, City of Prattville
Vacant, City of Montgomery
Greta Duckett, City of Montgomery
Edward Stevens, City of Montgomery
Augustus Townes Jr, City of Montgomery
Theodore White, City of Montgomery
Blair Rehnberg, Town of Coosada
Vacant, Millbrook
Valeria Harman, Montgomery
Roger Burnett, Montgomery County
Rick Beauchamp, Elmore County
Charles Rowe, Elmore County
Gracie Stroud, Montgomery
Vacant, Montgomery
David Martin, City of Montgomery

MPO Professional Transportation Planning Staff

The MPO Staff manages the day to day operation of the MPO to include all professional transportation planning and programming work.

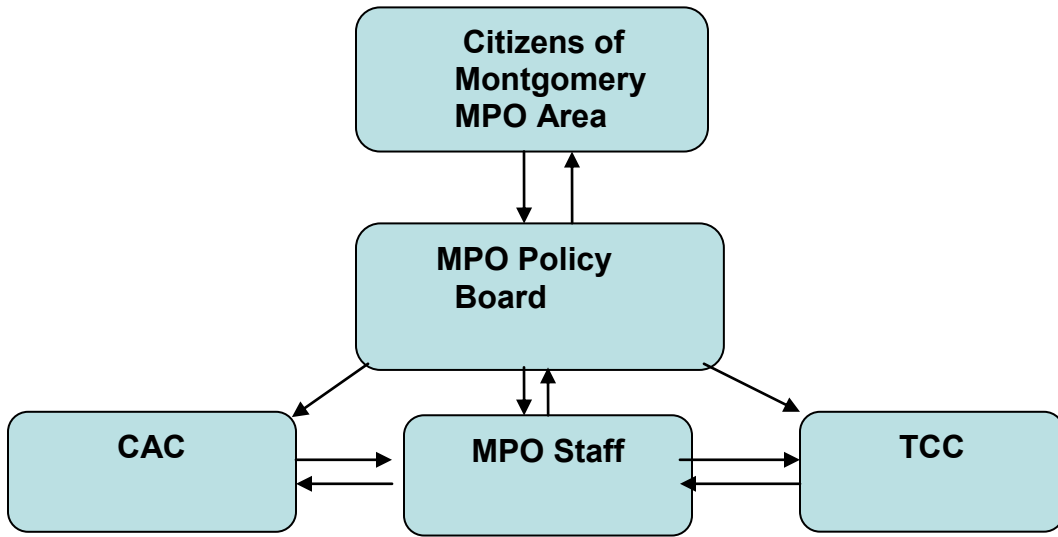
Robert Smith –Director of Planning/MPO Administrator, City of Montgomery/MPO
Kindell Anderson – Senior Planner, City of Montgomery/MPO
April Delchamps – Senior Planner, City of Montgomery/MPO

James Askew – GIS Analyst, City of Montgomery/MPO

Lisa Walters – City Development Tech, City of Montgomery/MPO

Joe Mack – Grants Accountant, City of Montgomery/MPO

Figure 2.: MPO Organizational Chart



ACRONYMS AND ABBREVIATIONS USED IN THE TRANSPORTATION PLANNING PROCESS

AL/SR - Alabama Highway or State Route
ADA – Americans with Disabilities Act
ADECA – Alabama Department of Economic and Community Affairs
ADEM – Alabama Department of Environmental Management
ALDOT - Alabama Department of Transportation
BR - Bridge
BSP - Base and pave
CAC - Citizens Advisory Committee
CAP - Transit Capital
CARPDC - Central Alabama Regional Planning and Development Commission
CARE - Critical Analysis and Reporting Environment
CMP – Congestion Management Plan
CN - Construction
COOP – Continuity of Operations Plan
CR - County Road
DBE – Disadvantaged Business Enterprise
EJ - Environmental Justice
EPA – Environmental Protection Agency
FCS - Functional Classification System
FHWA - Federal Highway Administration
FTA - Federal Transit Administration
GDB - Grade, drain, and bridge
GPB - Grade, drain, base, pave, and bridge
GIS - Geographic Information System
IM - Interstate Maintenance
ITS - Intelligent Transportation System
LRTP - Long Range Transportation Plan (20-25 Year Plan)
MAP-21 – Moving Ahead for Progress in the 21st Century (Current Transportation Legislation)
MATS - Montgomery Area Transit System
MSA -Metropolitan Statistical Area
MP - Mile Post
MPO - Metropolitan Planning Organization
MT - Maintenance program
MUTCD - Manual on Uniform Traffic Control Devices
NHS - National Highway System
OTH - Other
PE - Preliminary Engineering
PL - FHWA Planning Funds
PPP/PIP – Public Participation Plan (in CFRs) or Public Involvement Plan
RW - Right of Way
SAFETEA-LU - Safe, Accountable, Flexible, Efficient Transportation Equity Act: A Legacy for Users
Section 5303 - FTA Metropolitan Planning Funds
Section 5307 - FTA formula funds for urbanized areas
Section 5309 - FTA capital program funds (currently earmarked by Congress)
Section 5310 - FTA Elderly and Persons with Disabilities Program funds
Section 5311 - FTA Formula Funds for Rural Transportation Programs
Southeast Region - ALDOT Division consisting of eighteen counties (**Autauga**, Barbour, Bullock, Butler, Coffee, Covington, Crenshaw, Dale, **Elmore**, Geneva, Henry, Houston, Lee, Lowndes, Macon, **Montgomery**, Pike and Russell)
SOV - Single Occupancy Vehicle
SR - State Road
STIP - State Transportation Improvement Program

STP - Surface Transportation Program
TAP – Transportation Alternatives Program
TAZ - Traffic Analysis Zone
TCC - Technical Coordinating Committee
TE - Transportation Enhancement
TIP - Transportation Improvement Program
TMA - Transportation Management Area
UA - Urbanized Area (identified by the Census Bureau, 50,000 population and above)
UC - Urban Cluster (identified by the Census Bureau, 49,999 and below population)
UPWP - Unified Planning Work Program
USDOT – US Department of Transportation
UT - Utility Work

FINANCIAL BUDGET TABLES

TABLE 1
Draft FISCAL YEAR 2016 UPWP SUMMARY BUDGET

TASK NUMBER & DESCRIPTION	TOTALS									
	PL-FHWA MUA		SPR FHWA ALDOT		FTA	SECTION	FEDERAL FHWA FTA		MUA& ALDOT	GRAND TOTAL
						5307				
1.1 MPO ADMINISTRATION	\$64,664	\$16,166	\$175,000	\$43,750	\$0	\$0	\$239,664	\$0	\$59,916	\$299,580
1.2 COOP	\$400	\$100	\$0	\$0	\$0	\$0	\$400	\$0	\$100	\$500
2.1 UPWP	\$15,587	\$3,897	\$0	\$0	\$0	\$0	\$15,587	\$0	\$3,897	\$19,484
3.1 GIS, DATA COLLECTION AND ANALYSIS	\$66,405	\$16,601	\$0	\$0	\$0	\$0	\$66,405	\$0	\$16,601	\$83,006
3.2 PREPARATION OF EMISSIONS ESTIMATES USING MOVES 2010	\$400	\$100	\$0	\$0	\$0	\$0	\$400	\$0	\$100	\$500
4.1 GENERAL PUBLIC INVOLVEMENT	\$47,404	\$11,851	\$0	\$0	\$0	\$0	\$47,404	\$0	\$11,851	\$59,255
4.2 ENVIRONMENTAL JUSTICE	\$8,000	\$2,000	\$0	\$0	\$0	\$0	\$8,000	\$0	\$2,000	\$10,000
4.3 PUBLIC INVOLVEMENT FOR AIR QUALITY CONFORMITY	\$800	\$200	\$0	\$0	\$0	\$0	\$800	\$0	\$200	\$1,000
5.1 LONG RANGE TRANSPORTATION PLAN	\$18,400	\$4,600	\$0	\$0	\$0	\$0	\$18,400	\$0	\$4,600	\$23,000
5.1.1 LRTP AIR QUALITY CONFORMITY PREPARATION	\$1,600	\$400	\$0	\$0	\$0	\$0	\$1,600	\$0	\$400	\$2,000
5.1.2 AMENDED LRTP PROJECT LISTING FOR AIR QUALITY CONFORMITY	\$400	\$100	\$0	\$0	\$0	\$0	\$400	\$0	\$100	\$500
5.2 TRANSPORTATION IMPROVEMENT PLAN	\$56,301	\$14,075	\$0	\$0	\$0	\$0	\$56,301	\$0	\$14,075	\$70,376
5.2.1 AMENDED TIP PROJECT LISTINGS FOR AIR QUALITY CONFORMITY	\$2,400	\$600	\$0	\$0	\$0	\$0	\$2,400	\$0	\$600	\$3,000
5.3 TRANSIT PLANNING AND ADMINISTRATION	\$57,784	\$14,446	\$0	\$0	\$0	\$0	\$57,784	\$0	\$14,446	\$72,230
5.4 DISADVANTAGED BUSINESS ENTERPRISE	\$1,600	\$400	\$0	\$0	\$0	\$0	\$1,600	\$0	\$400	\$2,000
5.5 PARATRANSIT SERVICE FOR THE DISABLED	\$2,400	\$600	\$0	\$0	\$0	\$0	\$2,400	\$0	\$600	\$3,000
5.6 CONGESTION MANAGEMENT PLANNING	\$4,000	\$1,000	\$0	\$0	\$0	\$0	\$4,000	\$0	\$1,000	\$5,000
5.7 SAFETY PLANNING AND MONITORING	\$4,000	\$1,000	\$0	\$0	\$0	\$0	\$4,000	\$0	\$1,000	\$5,000
5.8 SPECIAL PROJECTS, CORRIDOR DEVELOPMENT AND DRI	\$4,000	\$1,000	\$0	\$0	\$0	\$0	\$4,000	\$0	\$1,000	\$5,000
5.9 INTERMODAL AND FREIGHT PLANNING	\$3,600	\$900	\$0	\$0	\$0	\$0	\$3,600	\$0	\$900	\$4,500
5.10 BICYCLE and PEDESTRIAN PLANNING	\$16,000	\$4,000	\$0	\$0	\$0	\$0	\$16,000	\$0	\$4,000	\$20,000
6.1 AIR QUALITY ANALYSIS, MONITORING AND PLANNING	\$800	\$200	\$0	\$0	\$0	\$0	\$800	\$0	\$200	\$1,000
6.2 CLIMATE CHANGE and GREEN HOUSE GAS EMISSIONS	\$400	\$100	\$0	\$0	\$0	\$0	\$400	\$0	\$100	\$500
CONSULTANT SERVICES: TASK 5.3 Transit Planning and Admin	\$75,000	\$18,750	\$0	\$0	\$0	\$0	\$75,000	\$0	\$18,750	\$93,750
TOTALS	\$452,345	\$113,086	\$175,000	\$43,750	\$0	\$0	\$552,345	\$0	\$138,086	\$690,431
TOTAL FEDERAL PLUS MATCHING LOCAL FUNDS		\$565,431		\$218,750		\$0		\$552,345		\$690,431

MUA=MONTGOMERY URBANIZED AREA 20%

PL-FHWA = FEDERAL HIGHWAY ADMINISTRATION AND FEDERAL TRANSIT ADMINISTRATION 80%

FTA = FEDERAL TRANSIT ADMINISTRATION

SPR-State Planning and Research. These are Federal funds allocated for ALDOT technical support of the MPO.

The PL-FHWA and FTA 5303 planning funds have been combined as one fund for better management and tracking.

ALDOT = ALBAMA DEPARTMENT OF TRANSPORTATION

*MPO's may carry over funds for three (3) years.

The oldest unexpended funds will be returned to the funding pool for reallocation.

TABLE 2				
Draft FISCAL YEAR 2016 UPWP AGENCY PARTICIPATION TABLE				
TASK NUMBER & DESCRIPTION	ALDOT	CITY OF MONTGOMERY MATCH	CONSULTANT SERVICES	TOTAL
1.1 MPO ADMINISTRATION	\$218,750	\$16,166	\$0	\$234,916
1.2 COOP	\$0	\$100	\$0	\$100
2.1 UPWP	\$0	\$3,897	\$0	\$3,897
3.1 GIS, DATA COLLECTION AND ANALYSIS	\$0	\$16,601	\$0	\$16,601
3.2 PREPARATION OF EMISSIONS ESTIMATES USING MOVES 2010	\$0	\$100	\$0	\$100
4.1 GENERAL PUBLIC INVOLVEMENT	\$0	\$11,851	\$0	\$11,851
4.2 ENVIRONMENTAL JUSTICE	\$0	\$2,000	\$0	\$2,000
4.3 PUBLIC INVOLVEMENT FOR AIR QUALITY CONFORMITY	\$0	\$200	\$0	\$200
5.1 LONG RANGE TRANSPORTATION PLAN	\$0	\$4,600	\$0	\$4,600
5.1.1 LRTP AIR QUALITY CONFORMITY PREPARATION	\$0	\$400	\$0	\$400
5.1.2 AMENDED LRTP PROJECT LISTING FOR AIR QUALITY CONFORMITY	\$0	\$100	\$0	\$100
5.2 TRANSPORTATION IMPROVEMENT PLAN	\$0	\$14,075	\$0	\$14,075
5.2.1 AMENDED TIP PROJECT LISTINGS FOR AIR QUALITY CONFORMITY	\$0	\$600	\$0	\$600
5.3 TRANSIT PLANNING AND ADMINISTRATION	\$0	\$33,196	\$75,000	\$108,196
5.4 DISADVANTAGED BUSINESS ENTERPRISE	\$0	\$400	\$0	\$400
5.5 PARATRANSIT SERVICE FOR THE DISABLED	\$0	\$600	\$0	\$600
5.6 CONGESTION MANAGEMENT PLANNING	\$0	\$1,000	\$0	\$1,000
5.7 SAFETY PLANNING AND MONITORING	\$0	\$1,000	\$0	\$1,000
5.8 SPECIAL PROJECTS, CORRIDOR DEVELOPMENT AND DRI	\$0	\$1,000	\$0	\$1,000
5.9 INTERMODAL AND FREIGHT PLANNING	\$0	\$900	\$0	\$900
5.10 BICYCLE & PEDESTRIAN PLANNING	\$0	\$4,000	\$0	\$4,000
6.1 AIR QUALITY ANALYSIS, MONITORING AND PLANNING	\$0	\$200	\$0	\$200
6.2 CLIMATE CHANGE & GREEN HOUSE GAS EMISSIONS	\$0	\$100	\$0	\$100
TOTAL	\$218,750	\$113,086	\$75,000	\$406,836